

CERTIFICATE

CERTIFIED LAND CORNER

No. 70

21504170020

I, Garold A. Sime, do hereby certify that on the 18th day of June 1990, I found ~~(XXXXXX)~~ (no evidence) of the N 1/4 corner of Section 20, T 15 N, R 4 W Fourth Principal Meridian, and I re-established said corner according to the Wisconsin Statutes as shown and described hereon.

Dated this 19th day of October 1990.

Garold A. Sime

Monroe County Surveyor
Title

History of corner establishment since Original Government Survey

No history recorded since the original government survey.

Description of corner evidence found:

I set this corner on line and equidistant between section corners

Description of corner and witness monuments, references and accessories used to perpetuate the original or re-established location of this corner:

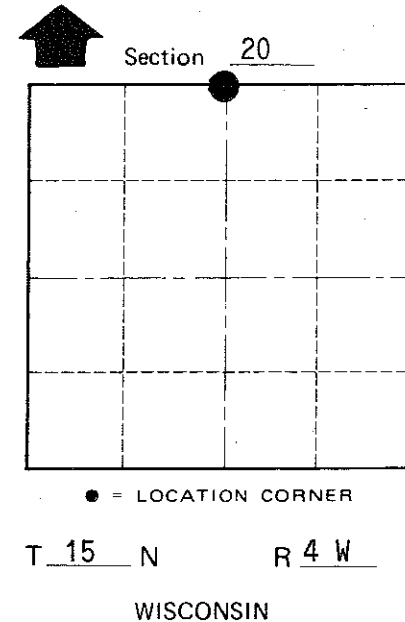
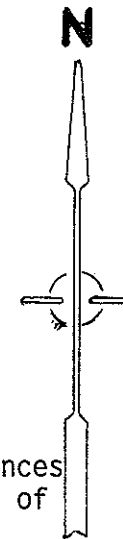
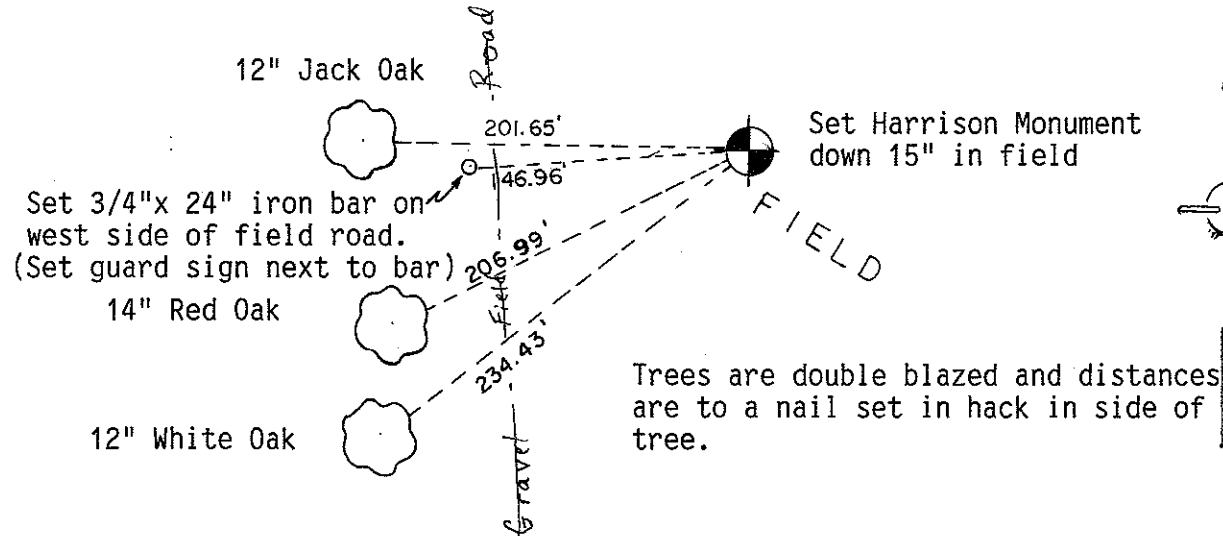
Set cast iron Harrison Monument down 15" in field.

Witnesses to corner location:

Garold A. Sime, R.L.S.

John F. Kenworthy

Brian Forsythe



COUNTY SURVEYOR FORM NO. 1

SURVEY CONTROL ORDER

Horizontal _____
Vertical _____

WISCONSIN COORDINATE SYSTEM

Corner	East (X)	North (Y)	Elevation (Z)	Zone
Control Sta. Name				

~~XXXXXX~~ Town of Portland

County of Monroe