

U.S. PUBLIC LAND CORNER MAINTENANCE

Corner ID : SE Sec.17, T15N-R4W
21504170000

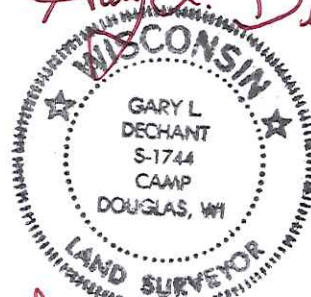
DATE	CREW	MONUMENT TYPE
June 13, 2014	Zachariah P.Dechant Gary L. Dechant	Found 1 1/4" on south side of large red oak embedded in roots in e-w fence. 55' south of centerline of Mainstream Road (formerly CTH "Y")

References:

- 1) Set 3/4"x24" hex iron bar , down 6"
- 2) Set 3/4"x 24" hex iron bar, down 6"
- 3) Set 3/4"x24" hex iron bar, down 6"
- 4) Set 3/4"x24" hex iron bar, down 6"

Bearing	Distance
N81E	21.50'
S37E	26.22'
S16W	17.04'
N53W	15.41'

COORDINATES:

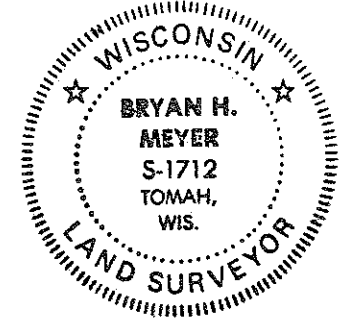
Gary L. Dechant

June 13, 2014

CERTIFICATE

CERTIFIED LAND CORNER

No. 69

21504170000



H. A. Sime and Associates
P. O. Box 705, Tomah, WI
Phone: (608)-372-5392

I, Bryan H. Meyer, do hereby certify that on the 5th day of December 19 89, I found (evidence) ~~to be evidence~~ of the Southwest corner of Section 16, T 15 N, R 4 W Fourth Principal Meridian, and I re-established said corner according to the Wisconsin Statutes as shown and described hereon.

Dated this 7th day of Dec. 19 89.

Bryan H. Meyer
Deputy County Surveyor
Title

History of corner establishment since Original Government Survey

Nothing recorded.

Description of corner evidence found:

I accepted the fence line projection from the North where said projection hits a fenceline from the West as the best available evidence. This corner location fits other Section data very well.

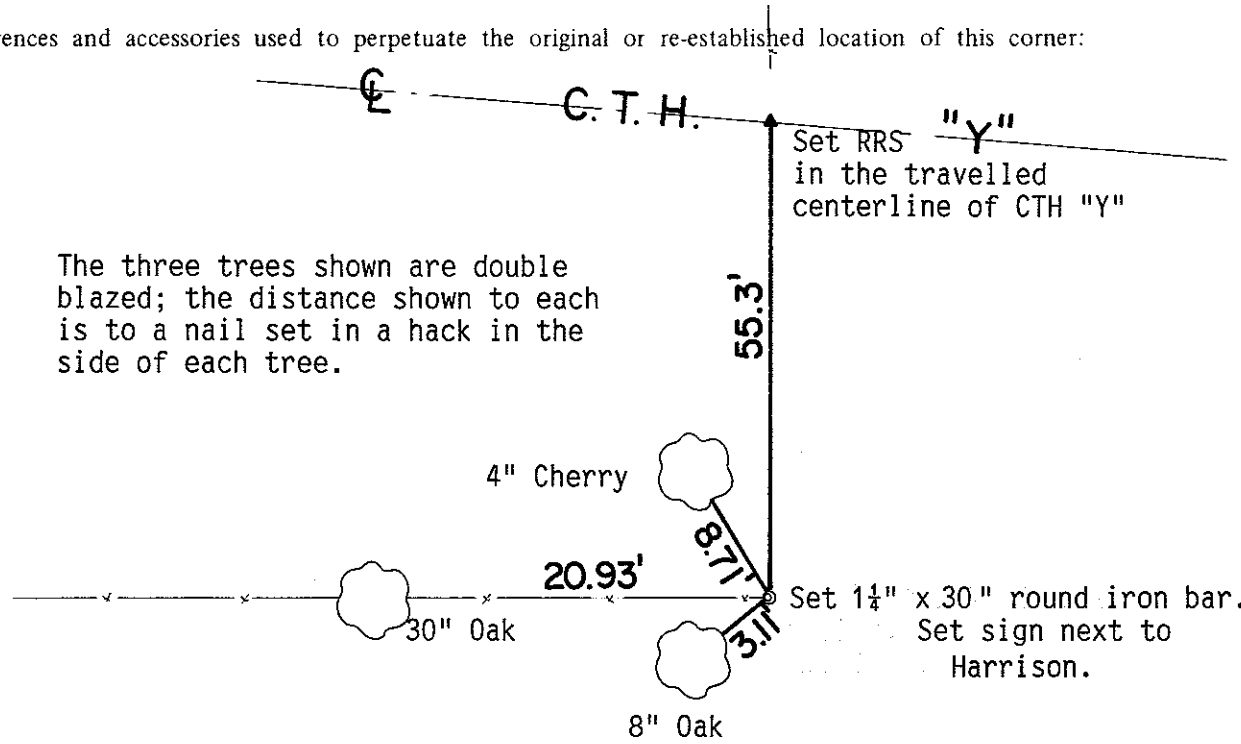
Description of corner and witness monuments, references and accessories used to perpetuate the original or re-established location of this corner:

Crew: Meyer, Forsythe
Date: December 5, 1989

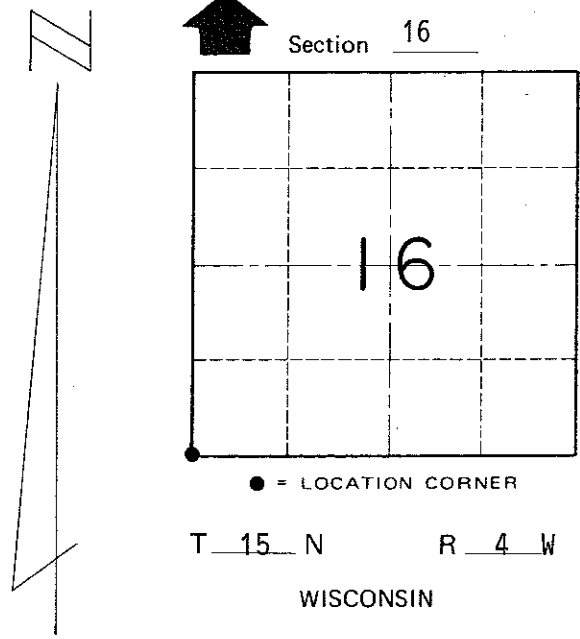
Witnesses to corner location:

Bryan H. Meyer
Brian Forsythe
John Kenworthy

COUNTY SURVEYOR FORM NO. 1



The three trees shown are double blazed; the distance shown to each is to a nail set in a hack in the side of each tree.



SURVEY CONTROL ORDER

Horizontal	_____
Vertical	_____

WISCONSIN COORDINATE SYSTEM

Corner	East (X)	North (Y)	Elevation (Z)	Zone
Control Sta. Name				

~~City/Village~~ Town of Portland
County of Monroe