

# U.S. PUBLIC LAND CORNER MAINTENANCE

Corner ID : S1/4 Sec.16, T15N-R4W  
21504160020

DATE	CREW	MONUMENT TYPE
June 13, 2014	Zachariah P.Dechant Gary L. Dechant	Found Harrison in centerline CTH "X"


References:

	<u>Bearing</u>	<u>Distance</u>
1) Set 3/4"x24" hex iron bar 5' south & 3' west of SW corner of Church	N29E	74.96'
2) Existing 3/4" iron bar, flush, in e-w r/w fence	S50E	38.55'
3) Set 3/4"x24" hex iron bar, down 10", 5' south of e-w r/w fence	S29W	38.42'
4) Set 3/4"x24" hex iron bar, flush, 1' north of NW corner of 1'x1'x4' Becker grave monument	N50W	79.23'

**COORDINATES:**

Harrison & reference monuments on straight lines.

*Gary L Dechant*



*June 13, 2014*

21504160020

I, Bryan H. Meyer, do hereby certify that on the 18<sup>th</sup> day of December 19 86, I found (evidence) ~~no evidence~~ of the South 1/4 corner of Section 16, T 15 N, R 4 W Fourth Principal Meridian, and I re-established said corner according to the Wisconsin Statutes as shown and described hereon.

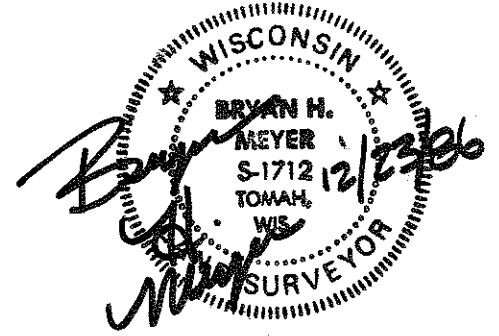
History of corner establishment since Original Government Survey

Webster Kenyon was here in November of 1891. Fred Zietlow was here in October of 1971 and set a railroad spike. Duke Marten was here in July 1974 and replaced the spike with a 3/4" iron bar.  
Description of corner evidence found:

I found Mr. Marten's 3/4" iron bar, down 2"+ in the centerline of C.T.H. "X". There is still evidence of an old fenceline to the South. I accepted the 3/4" iron bar as the corner.

Dated this 23rd day of Dec. 19 86.

Bryan H. Meyer  
Deputy County Surveyor  
Title



COUNTY SURVEYOR FORM NO. 1

Description of corner and witness monuments, references and accessories used to perpetuate the original or re-established location of this corner:

Crew: Meyer, Kenworthy  
Date: December 18, 1986-3:00 P.M.  
Weather: Overcast, 30°±, Merry Christmas!!  
Witnesses to corner location:

John Kenworthy  
Bryan H. Meyer

SW corner of Charlie Hehn headstone

Found existing 3/4" iron bar in the centerline of C.T.H. "X"!

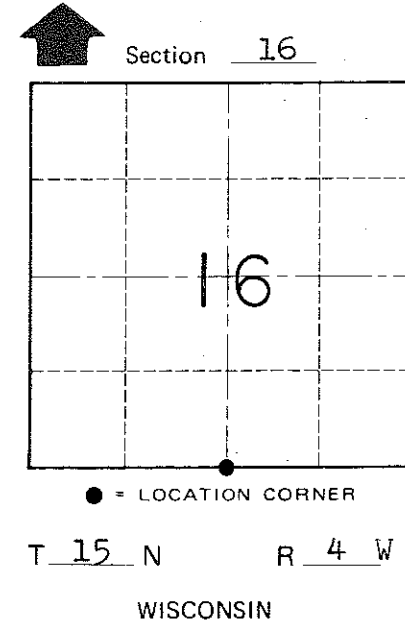
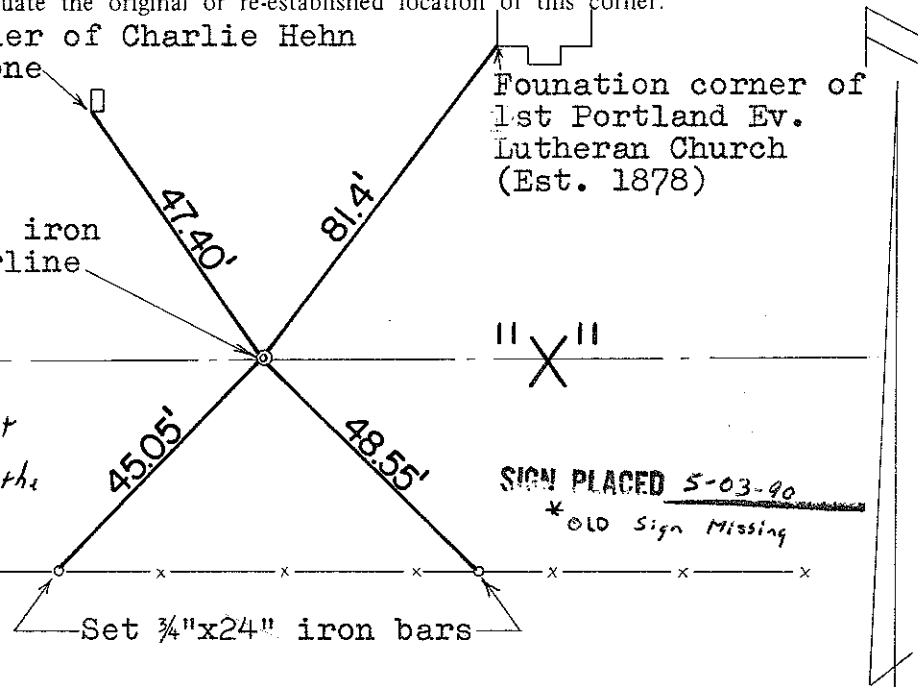
C. T. H.

Foundation corner of 1st Portland Ev. Lutheran Church (Est. 1878)

Replaced Iron Bar With Harrison Monument

On 5-03-90 Crew: Sime - Kenworthy - Forsythe

Comments \_\_\_\_\_



SURVEY CONTROL ORDER

Table with 2 rows: Horizontal, Vertical

NOTE: Set sign and post 23± feet North of corner, South of retaining wall. WISCONSIN COORDINATE SYSTEM

Table with 5 columns: Corner, East (X), North (Y), Elevation (Z), Zone

~~City/Village of~~ Town of Portland  
County of Monroe