

CERTIFICATE

CERTIFIED LAND CORNER

No. 59

21504142000

I, Bryan H. Meyer, do hereby certify that on the 16th day of May 19 83, I found (evidence) ~~no evidence~~ of the East 1/4 corner of Section 17, T 15 N, R 4 W Fourth Principal Meridian, and I re-established said corner according to the Wisconsin Statutes as shown and described hereon.

History of corner establishment since Original Government Survey

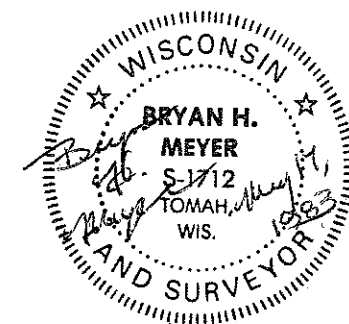
O. R. Dahl was here in January of 1869.

Description of corner evidence found:

Accepted 3 way fence corner as the best available evidence.

Dated this 17th day of May 19 83.

Bryan H. Meyer
Deputy County Surveyor
Title



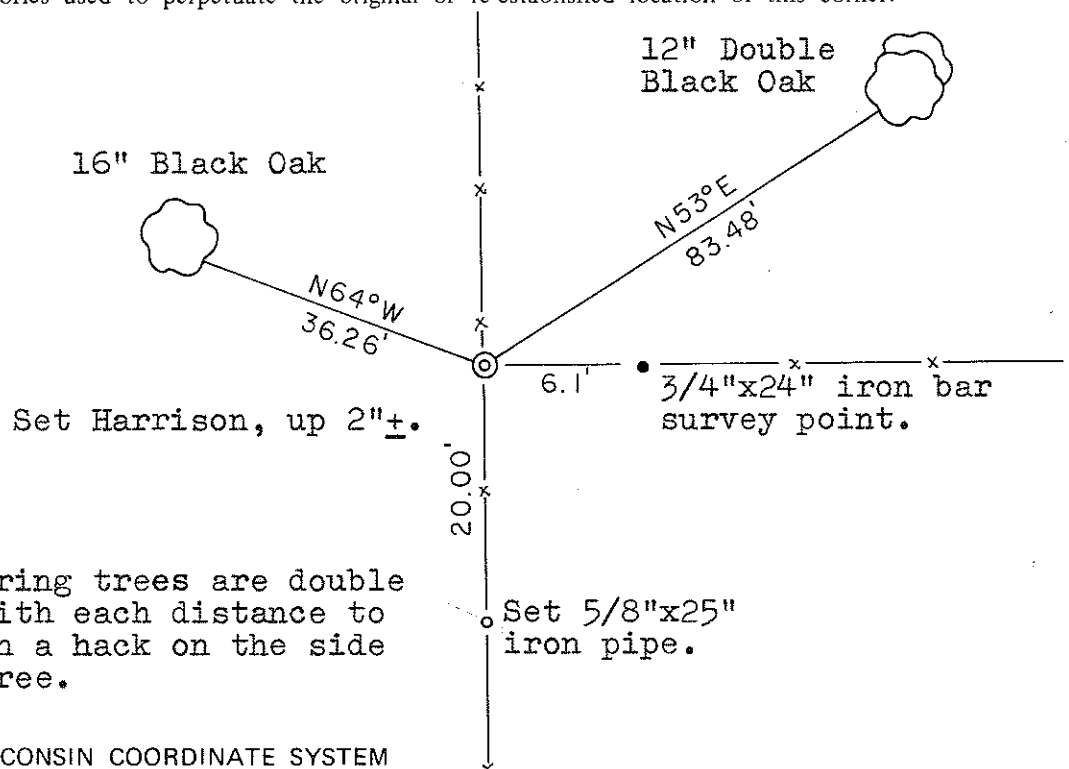
COUNTY SURVEYOR FORM NO. 1

Description of corner and witness monuments, references and accessories used to perpetuate the original or re-established location of this corner:
Date: May 16, 1983 - 1:00 P.M.
Weather: P. Cloudy, 60°±.

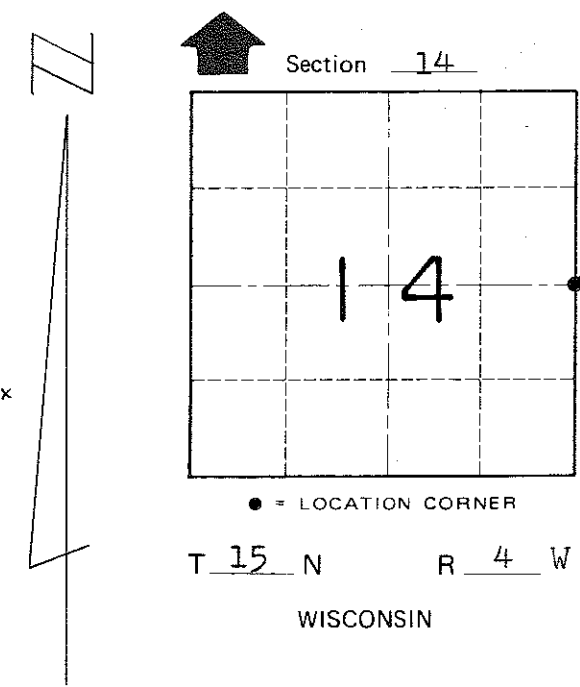
Witnesses to corner location:

Bryan H. Meyer - R.L.S. 1712
Dallas Wilhite

Approved: HARLEY A. SIME
MONROE CO. SURVEYOR



Both bearing trees are double blazed with each distance to a nail in a hack on the side of the tree.



SURVEY CONTROL ORDER

Horizontal	_____
Vertical	_____

WISCONSIN COORDINATE SYSTEM

Corner	East (X)	North (Y)	Elevation (Z)	Zone
Control Sta. Name				

~~City, Village or~~ Town of Portland
County of Monroe