

CERTIFICATE

CERTIFIED LAND CORNER

No. 54

21504132000

I, Harley A. Sime, do hereby certify that on the 7th day of November 19 79, I found ~~(evidence)~~ (no evidence) of the West 1/4 corner of Section 18, T 15 N, R 3 W Fourth Principal Meridian, and I re-established said corner according to the Wisconsin Statutes as shown and described hereon.

Dated this 12th day of Feb. 19 81.

Harley A. Sime, R.L.S. 355

County Surveyor
Title

History of original corner establishment:

No known recorded history since the original government survey.

Description of corner evidence found:

Set the corner at a computed location after surveying out Section 18. This location best fits overall existing occupied evidence found in the section. The occupied corner 67'± to the west is obviously incorrect.

COUNTY SURVEYOR FORM NO. 1

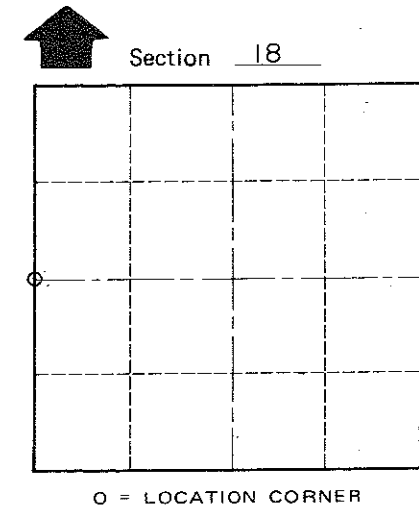
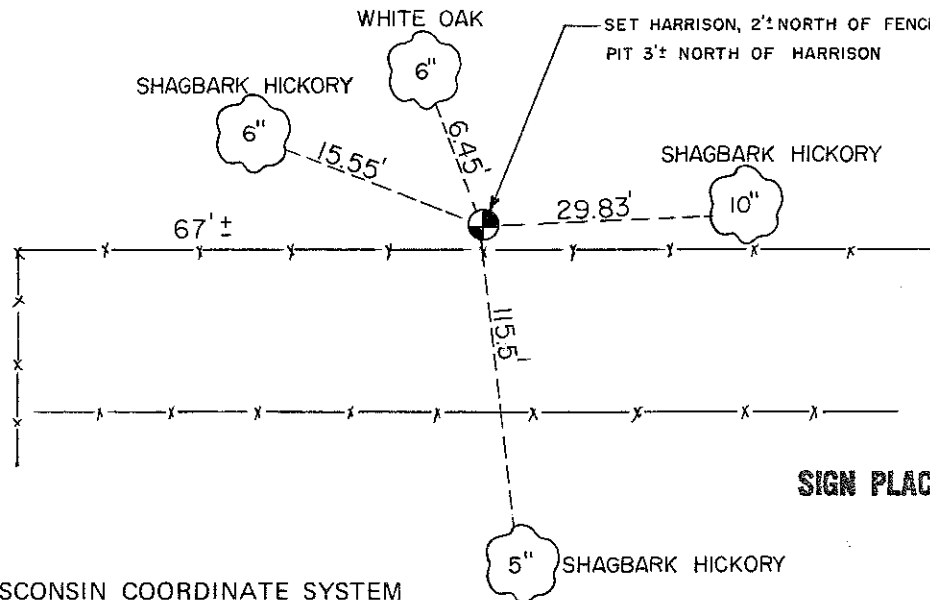
Description of corner and witness monuments, references and accessories used to perpetuate the original or re-established location of this corner:

Witnesses to corner location:

Dechant

Tormoen

NOTE: ALL TREES DOUBLE BLAZED WITH NAIL & CAPS SET



T 15 N R 3 W
WISCONSIN

**Approved: HARLEY A. SIME
MONROE CO. SURVEYOR**

SIGN PLACED 9-20-90 H. Sime

SURVEY CONTROL ORDER

Horizontal	_____
Vertical	_____

WISCONSIN COORDINATE SYSTEM

Corner	East (X)	North (Y)	Elevation (Z)	Zone
Control Sta. Name				

Town Jefferson

County of Monroe