

CERTIFICATE

CERTIFIED LAND CORNER

No. 73

21504130000

I, Harley A. Sime, do hereby certify that on the 7th day of November 19 79, I found (evidence) (~~was~~) of the Southwest corner of Section 18, T 15 N, R 3 W, Fourth Principal Meridian, and I re-established said corner according to the Wisconsin Statutes as shown and described hereon.

History of original corner establishment:
Fred Holden was here in May of 1907.

Dated this 12th day of Feb. 19 81.

Harley A. Sime, R.L.S. 355

County Surveyor

Title

Description of corner evidence found:

Set by intersecting fences to the West and to the North. Corner fell next to corner post of fence to the West. Set an iron bar in the earlier section traverse and replaced it with a Harrison on this date (11-7-1979).

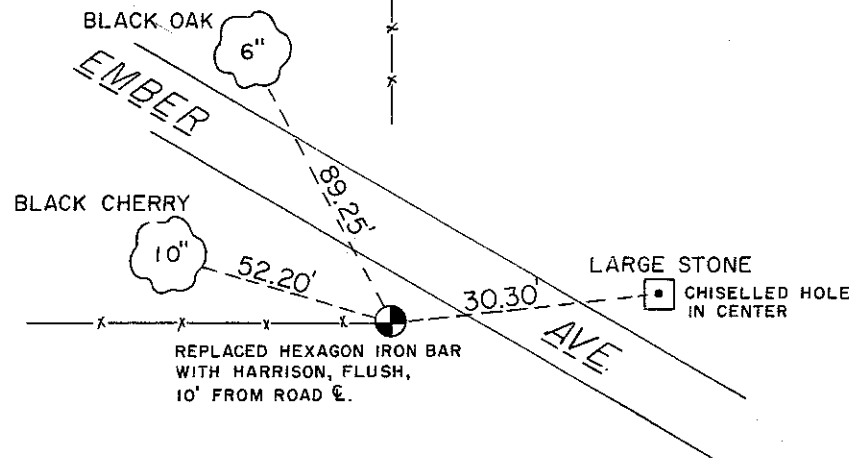
COUNTY SURVEYOR FORM NO. 1

Description of corner and witness monuments, references and accessories used to perpetuate the original or re-established location of this corner:

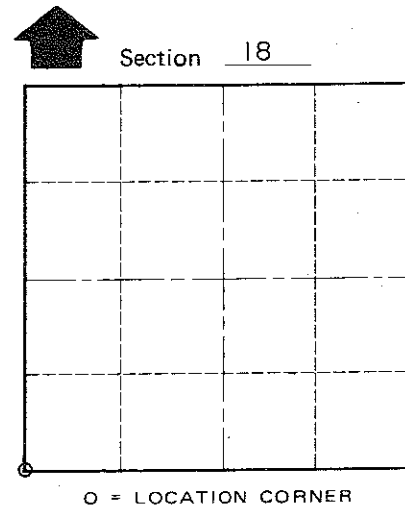
Witnesses to corner location:

Dechant

Tormoen



NOTE: ALL TREES DOUBLE BLAZED WITH NAIL & CAP SET



O = LOCATION CORNER

T 15 N R 3 W

WISCONSIN

Approved: HARLEY A. SIME
MONROE CO. SURVEYOR

SURVEY CONTROL ORDER

Horizontal	_____
Vertical	_____

WISCONSIN COORDINATE SYSTEM

Corner	East (X)	North (Y)	Elevation (Z)	Zone
Control Sta. Name				

_____ or Town Jefferson

County of Monroe