

CERTIFICATE

CERTIFIED LAND CORNER

No. 14

21505012000

I, Gary L. Dechant, do hereby certify that on the 18th day of December 19 86, I found (evidence) (no evidence) of the W 1/4 corner of Section 6, T 15 N, R 4 W Fourth Principal Meridian, and I re-established said corner according to the Wisconsin Statutes as shown and described hereon.

Dated this 7th day of Jan. 19 87.

Gary L. Dechant

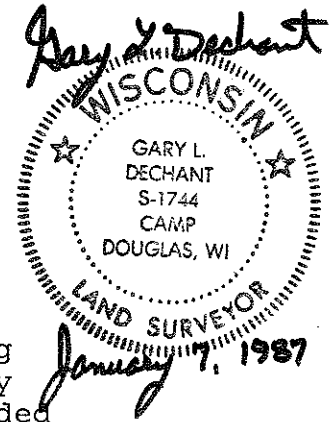
Registered Land Surveyor, 1744 Title

History of corner establishment since Original Government Survey

No known history since the original government survey.

Description of corner evidence found:

The presently occupied fence corner at the W 1/4 of Section 6 has long been here, according to adjacent farmer in LaCrosse County, but farmer stated some doubt to its correctness. Rough measuring to the forty corners both North and South as now fenced, it appears both forty corners were measured in using the fence corner as presently occupied at W 1/4 corner of said Section 6. However, this said presently occupied fence corner is approximately 167 feet south and 83 feet west from being equidistant and on a straight line between section corners. This is very irregular for being on a Township line. After some hard thought, I decided

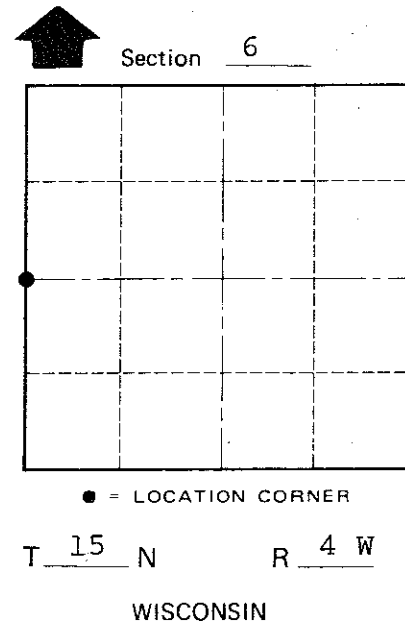
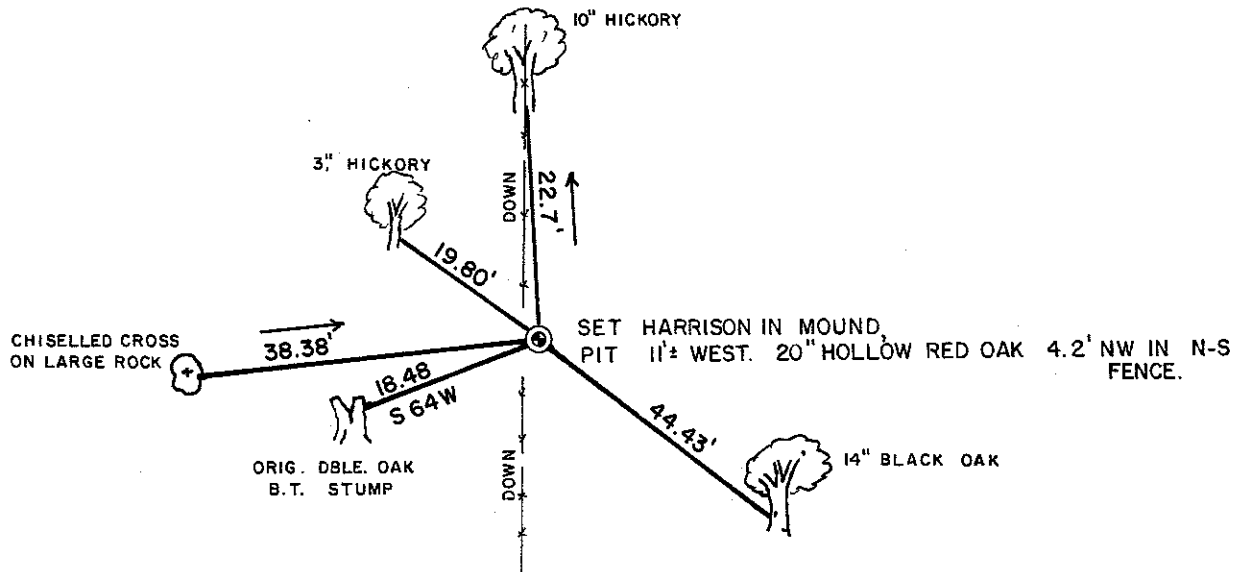


Description of corner and witness monuments, references and accessories used to perpetuate the original or re-established location of this corner: (over)

Witnesses to corner location:

David E. Madison

Gary L. Dechant



COUNTY SURVEYOR FORM NO. 1

SURVEY CONTROL ORDER

Horizontal _____
Vertical _____

WISCONSIN COORDINATE SYSTEM

Corner	East (X)	North (Y)	Elevation (Z)	Zone
Control Sta. Name				

(Trees double blazed with N&C's set)

City, Village or Town Portland

County of Monroe

to set the corner equidistant and on a straight line between section corners. When we went to set it, we found, with great delight, remnants of another north-south fence and an Original Double Oak B.T. (stump). We reset the corner at Original bearing and distance from said stump. This point fits a fence to the North (20 fence) reasonably well and fits the occupied east-west fence at the $C\frac{1}{4}$ of Section 6 within 6 feet on a straight line to the $E\frac{1}{4}$ corner of Section 6.

The corner as set, is now approximately 156 feet north and 80 feet east of presently occupied fence corner. This will also greatly affect the forty corner location both north and south of here in relation to their present occupied position. It is hard to determine what all went on here, but I will let the evidence found speak for itself.

Also from all of this, it seems the original survey made an error of about 1 chain per half mile in this closing section. The original survey recorded a closing mile of 5280 feet versus our measured closing mile of 5417.06 feet.