

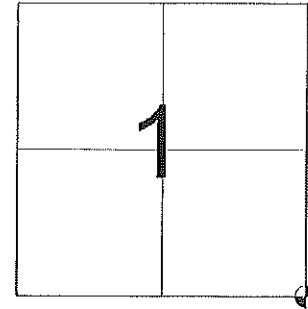
US PUBLIC LAND SURVEY MONUMENT RECORD-ADDENDUM 2017-11

TIE SHEET ADDENDUM-21505010000

SOUTHEAST CORNER SECTION 1 T. 15N., R. 5W. TOWN OF WASHINGTON
LA CROSSE COUNTY

WISCONSIN COORDINATE SYSTEM

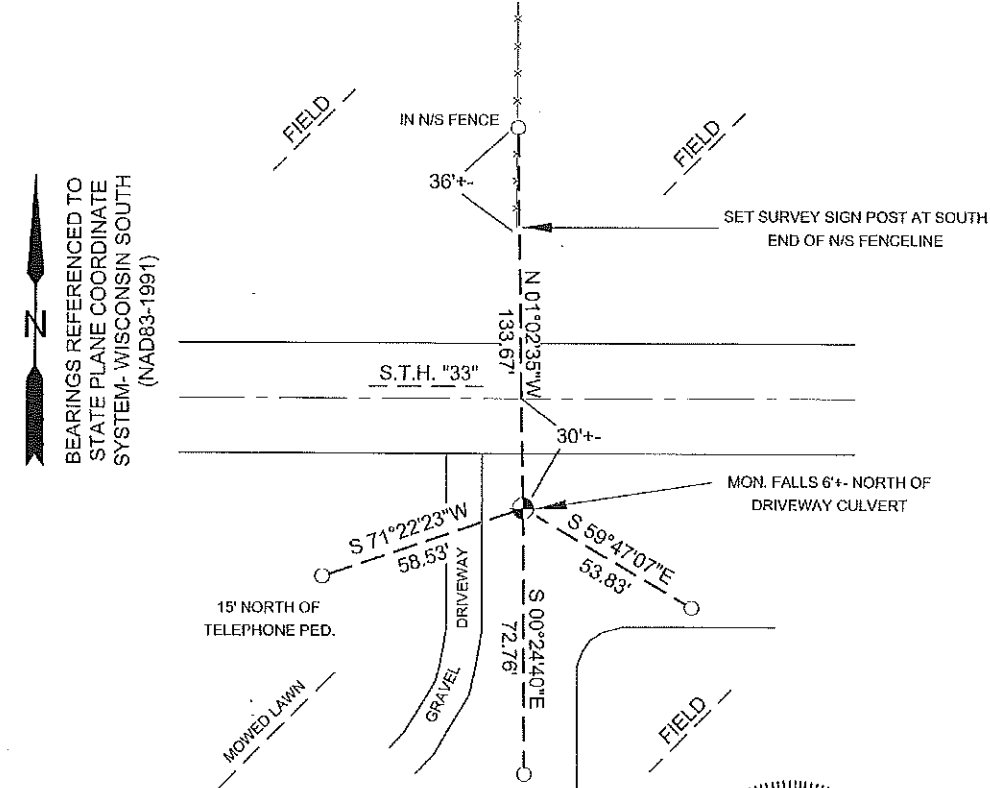
DATUM: SPC-WI SOUTH NAD83(91)
NORTH: 656,509.81'
EAST: 1,727,989.09'
ELEVATION:
TYPE OF MONUMENT: 3/4"x18" Iron Bar with Aluminum Cap
CREW: BRYAN MEYER, COREY HUGHES
DATE: 4/20/2017



LOCATION OF LANDMARK

Describe what day the corner was visited, describe the condition of the recorded monument and ties. Followed by a description as to how the monument position was reestablished and if any new ties were set.

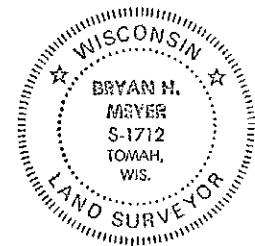
APRIL 20, 2017- I performed maintenance work for this corner on September 23, 2014 prior to road construction and found a Harrison Monument with the top broken off, searched for ties by C. Dechant and did not find any in place. On April 20, 2017 I set a 3/4"x30" Iron Bar with La Crosse County Aluminum Cap at the Existing County Coordinate for the original Harrison monument and set (4) new 3/4"x24" Iron Rebar ties as shown.



BEARINGS REFERENCED TO
STATE PLANE COORDINATE
SYSTEM - WISCONSIN SOUTH
(NAD83-1991)

LEGEND

- SET 3/4"x30" IRON BAR (WEIGHING 1.50LBS./FT.)
WITH LA CROSSE COUNTY ALUMINUM CAP
- SET 3/4"x24" IRON REBAR (WEIGHING 1.50LBS/FT)



Bryan H. Meyer
Bryan H. Meyer

5/18/2017
Date

I, Bryan H. Meyer, Hereby certify that the corner location shown on this record was determined by me or under my direction and control and that this U.S. Public Land Survey Monument Record Addendum is correct and complete to the best of my knowledge and belief.

ROMPORTL ID:
21505010000

I, Gary L. Dechant, do hereby certify that on the 18th day of December 1986, I found (evidence) ~~(an evidence)~~ of the NW corner of Section 7, T 15 N, R 4 W Fourth Principal Meridian, and I re-established said corner according to the Wisconsin Statutes as shown and described hereon.

Dated this 19th day of Dec. 1986.

Gary L. Dechant
Registered Land Surveyor, 1744
Title

History of corner establishment since Original Government Survey

G. Watts, surveyor of LaCrosse County, in 1983, set a P. K. nail in the centerline of Highway "33", and states it was set from old highway plans.

Description of corner evidence found:

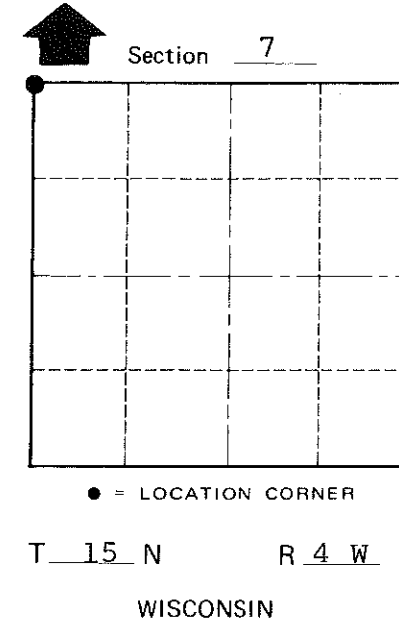
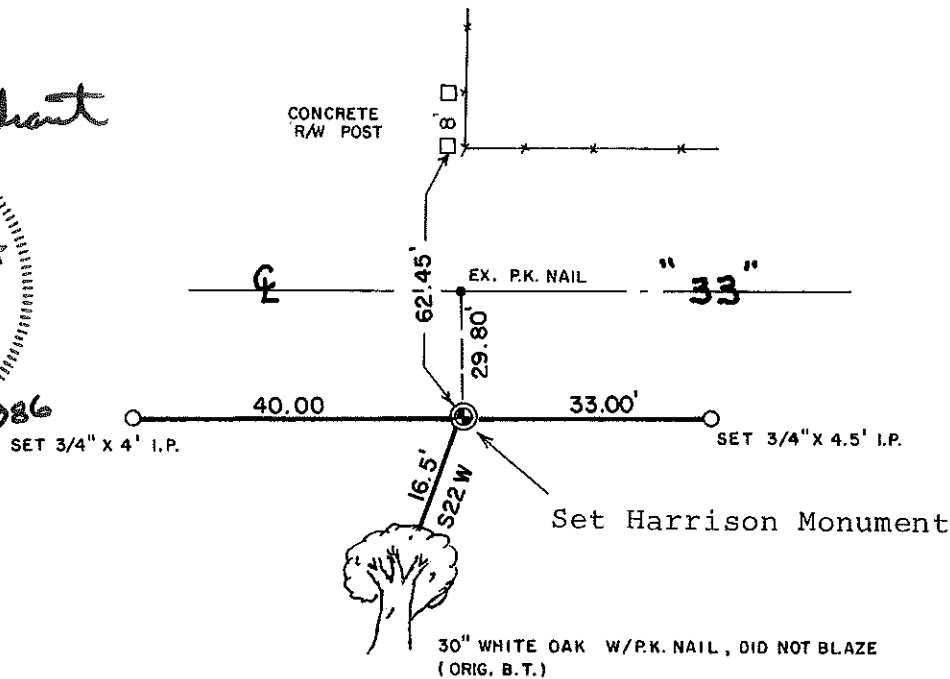
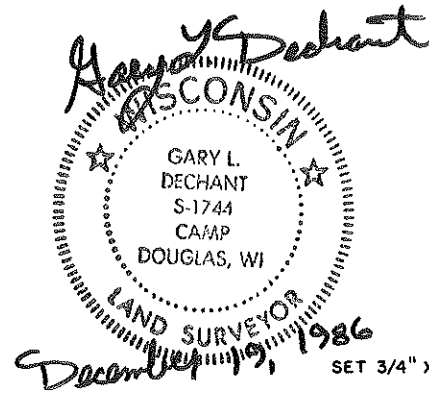
Did not use P.K. nail, set by G. Watts, as the corner. Reset corner by Original distance and bearing from 30" White Oak (same tree as shown on Watts tie sheet as a 30" Oak) which I strongly believe to be the original bearing tree of the Original Government Survey. Also, at this point we found remnants of old spike wire in form, as fencing wire is wrapped around a corner fence post, also found here was a medium size field stone, a piece of iron which I could not identify, and the soil did look somewhat discolored, possibly indicating a post once being here.

Contacted Darrell Kadding, Surveyor Supervisor, of the D.O.T. and said he could find no records to show this corner relationship with the highway centerline. The R/W map we did

Description of corner and witness monuments, references and accessories used to perpetuate the original or re-established location of this corner:

Witnesses to corner location:

David E. Madison
Gary L. Dechant



SURVEY CONTROL ORDER

Horizontal	_____
Vertical	_____

WISCONSIN COORDINATE SYSTEM

Corner	East (X)	North (Y)	Elevation (Z)	Zone
Control Sta. Name				

~~City, Village or~~ Town Portland
County of Monroe

COUNTY SURVEYOR FORM NO. 1

receive gives no definite facts concerning this section corner. But from the R/W map given to us, projecting the section line on the map, it would also fall somewhat south of the highway centerline. With the evidence found, I found it difficult to use the centerline of the Highway as the corner.

This corner has been discussed with Gary Watts, and he has no objection to the change.