

CERTIFICATE

CERTIFIED LAND CORNER

No. 37

21504092000



H. A. Sime and Associates
P. O. Box 705, Tomah, WI
Phone: (608)-372-5392

I, Bryan H. Meyer, do hereby certify that on the 13th day of December 1989, I found (evidence) ~~no evidence~~ of the East 1/4 corner of Section 9, T 15 N, R 4 W Fourth Principal Meridian, and I re-established said corner according to the Wisconsin Statutes as shown and described hereon.

Dated this 15th day of Dec. 1989.
Bryan H. Meyer
Deputy County Surveyor
Title

History of corner establishment since Original Government Survey

Nothing recorded.

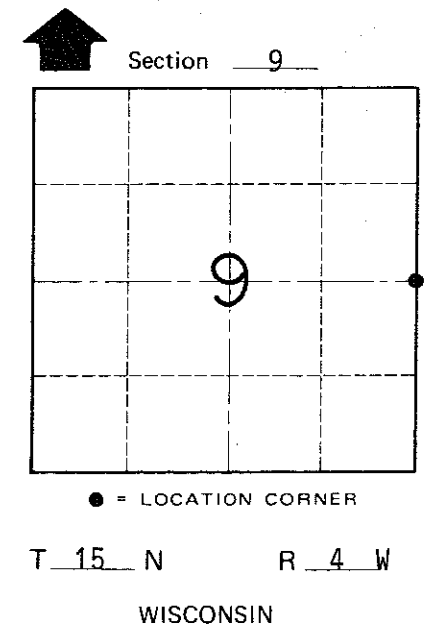
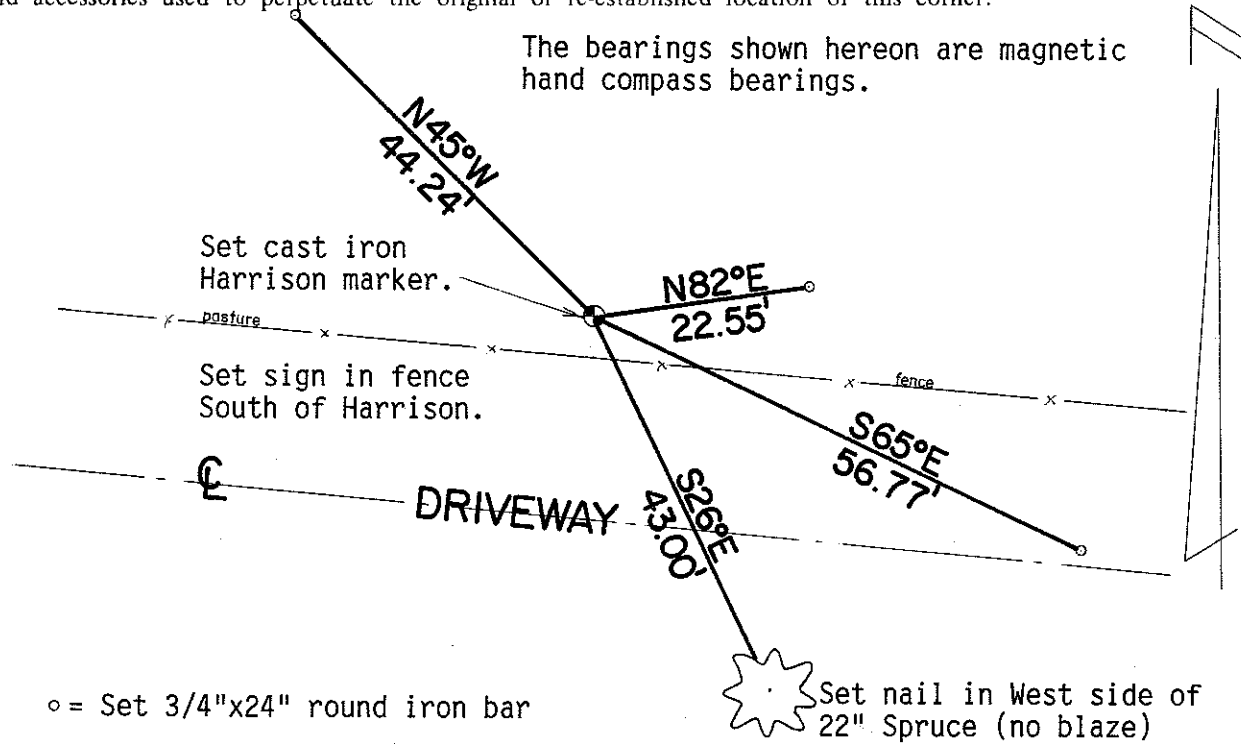
Description of corner evidence found:

I set this corner on line with the approximate centerline of Edgewood Avenue projected South where said projected centerline intersects a line projected from the West 1/4 corner through the CE1/16 corner of Section 9.

Description of corner and witness monuments, references and accessories used to perpetuate the original or re-established location of this corner:

Crew: Kenworthy, Forsythe
Date: December 13, 1989
Witnesses to corner location:
John Kenworthy
Brian Forsythe
Bryan H. Meyer

The bearings shown hereon are magnetic hand compass bearings.



o = Set 3/4"x24" round iron bar

Set nail in West side of 22" Spruce (no blaze)

SURVEY CONTROL ORDER

Horizontal	_____
Vertical	_____

WISCONSIN COORDINATE SYSTEM

Corner	East (X)	North (Y)	Elevation (Z)	Zone
Control Sta. Name				

~~City/Village of~~ Town of Portland
County of Monroe

COUNTY SURVEYOR FORM NO. 1