

21504090020

I, Lawrence A. Feddersen, do hereby certify that on the 20th day of April 19 96, I found ~~evidence~~ (no evidence) of the North Quarter corner of Section 16, T 15 N, R 4 W Fourth Principal Meridian, and I re-established said corner according to the Wisconsin Statutes as shown and described hereon.

Dated this 10 day of May 1996.

*Lawrence A. Feddersen*

Registered Land Surveyor  
Title



Description of corner and witness monuments, references and accessories used to perpetuate the original or re-established location of this corner:

Witnesses to corner location:

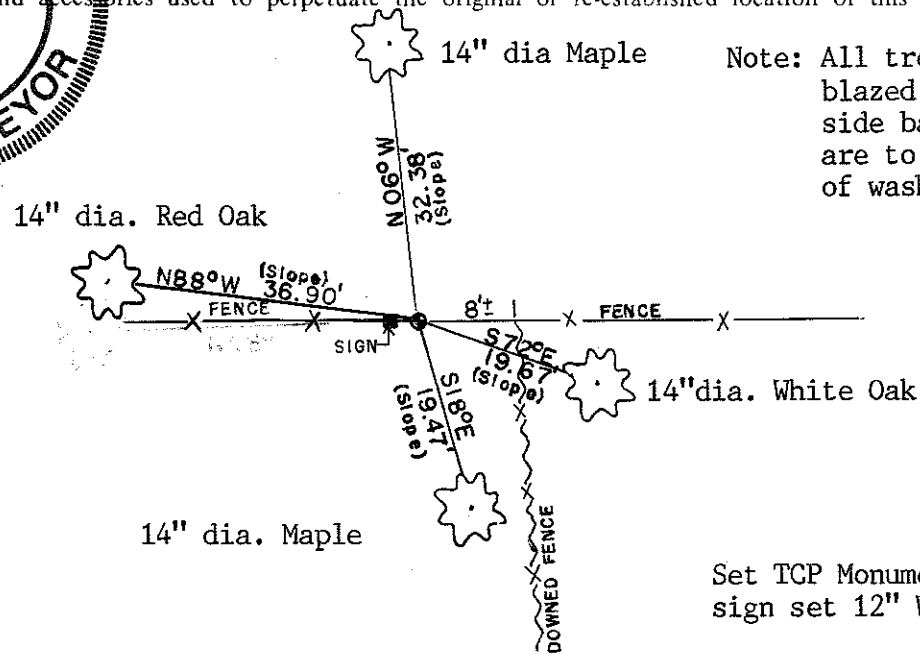
Lawrence A. Feddersen  
Timothy J. Jeatran  
Harold A. Haberlin

History of corner establishment since Original Government Survey

No record of re-established corner.

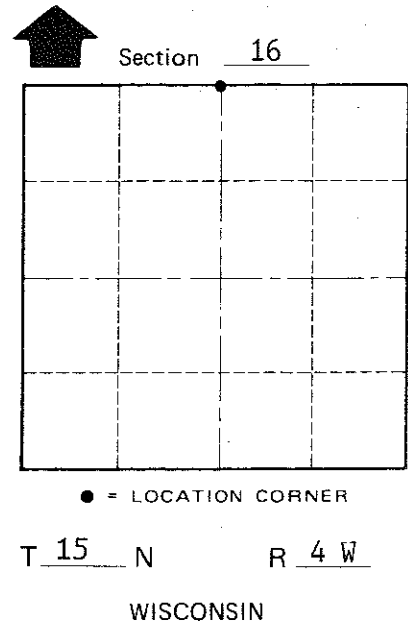
Description of corner evidence found:

No evidence was found at this corner location. The corner was re-established midway and on line between existing Harrison monuments at the Northwest and Northeast corners of Section 16.



Note: All trees are double blazed with N&W in side base. Measurements are to nail in center of washer.

Set TCP Monument up 1" with sign set 12" West



COUNTY SURVEYOR FORM NO. 1

SURVEY CONTROL ORDER

Horizontal \_\_\_\_\_  
Vertical \_\_\_\_\_

WISCONSIN COORDINATE SYSTEM

Corner	East (X)	North (Y)	Elevation (Z)	Zone
Control Sta. Name				

~~City, Village or~~ Town of Portland  
County of Monroe