

21504090000

I, Lawrence A. Feddersen, do hereby certify that on the First day of September 19 92, I found (evidence) (no evidence) of the Northwest corner of Section 15, T 15 N, R 4 W Fourth Principal Meridian, and I re-established said corner according to the Wisconsin Statutes as shown and described hereon.

Dated this 2ND day of Sept. 19 92.

Lawrence A. Feddersen

Registered Land Surveyor, S-1226 Title

History of corner establishment since Original Government Survey

No known history recorded since original government survey.

Description of corner evidence found:

Two-way fence in area provided poor evidence due to direction. Corner was set on a straight line and half way between the Southwest corner of Section 15 and the Northwest corner of Section 10.

Description of corner and witness monuments, references and accessories used to perpetuate the original or re-established location of this corner:

Witnesses to corner location:

Lawrence A. Feddersen

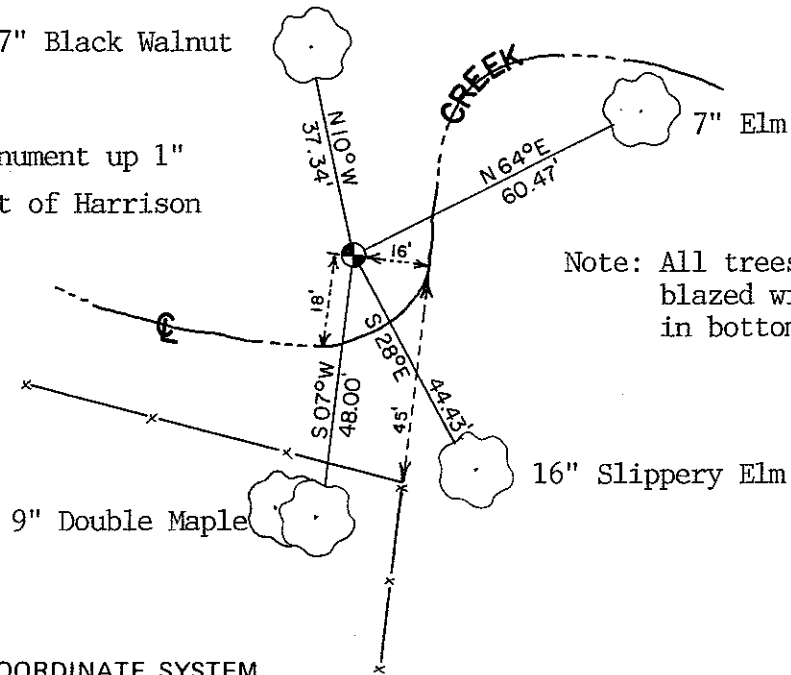
Timothy J. Jeatran

Henry V. Amberson

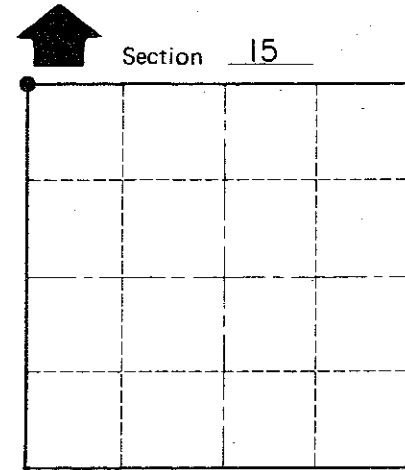
17" Black Walnut

Set Harrison monument up 1" Set sign 1' West of Harrison

9" Double Maple



Note: All trees shown are double blazed with nail & washer in bottom blaze.



● = LOCATION CORNER

T 15 N R 4 W

WISCONSIN

COUNTY SURVEYOR FORM NO. 1

SURVEY CONTROL ORDER

Table with 2 rows: Horizontal, Vertical

WISCONSIN COORDINATE SYSTEM

Table with 5 columns: Corner, East (X), North (Y), Elevation (Z), Zone

City, Village or Town of Portland

County of Monroe