

CERTIFICATE

I, Bryan H. Meyer, do hereby certify that on the 27th day of December 19 89, I found (evidence) ~~no evidence~~ of the West 1/4 corner of Section 9, T 15 N, R 4 W Fourth Principal Meridian, and I re-established said corner according to the Wisconsin Statutes as shown and described hereon.

Dated this 29th day of Dec. 19 89.

Bryan H. Meyer
Deputy County Surveyor
Title

COUNTY SURVEYOR FORM NO. 1.

Description of corner and witness monuments, references and accessories used to perpetuate the original or re-established location of this corner:

Crew: Kenworthy, Forsythe
Date: December 27, 1989

Witnesses to corner location:

John Kenworthy
Brian Forsythe
Bryan H. Meyer

SURVEY CONTROL ORDER

Horizontal	_____
Vertical	_____

WISCONSIN COORDINATE SYSTEM				
Corner	East (X)	North (Y)	Elevation (Z)	Zone
Control Sta. Name				

CERTIFIED LAND CORNER

History of corner establishment since Original Government Survey

A. B. Holden was here in March of 1880. Fred Zietlow was here in October of 1971 and set a 3/4"x24" round iron bar at the occupied fence corner. Wilbur Clark was here in May of 1977 and found a 3/4" iron bar.

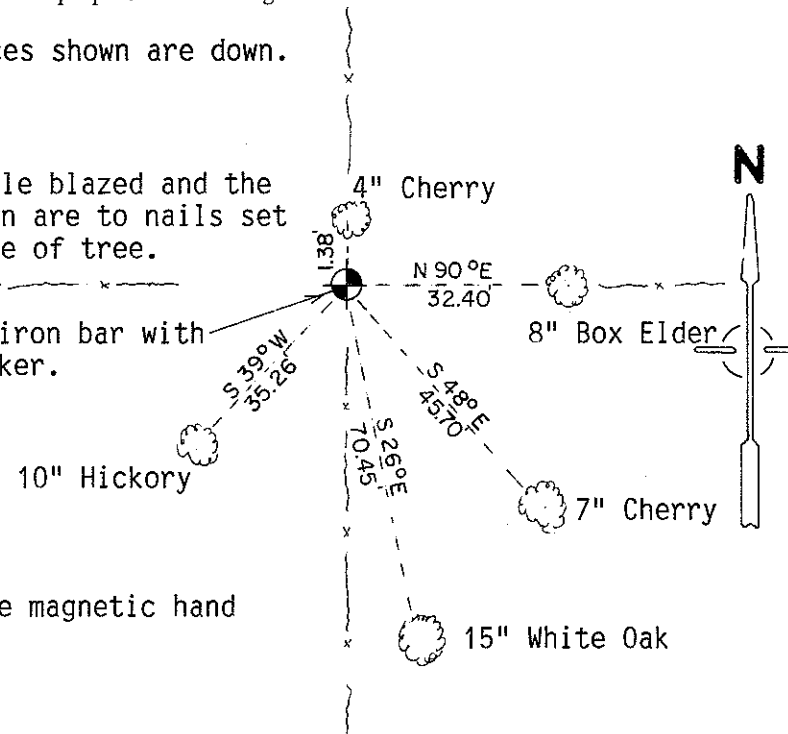
Description of corner evidence found:

I found a 3/4" round iron bar at the occupied fence corner and accepted it as the corner.

Note: The fences shown are down.

Trees are double blazed and the distances shown are to nails set in hack in side of tree.

Replaced 3/4" iron bar with a Harrison marker.



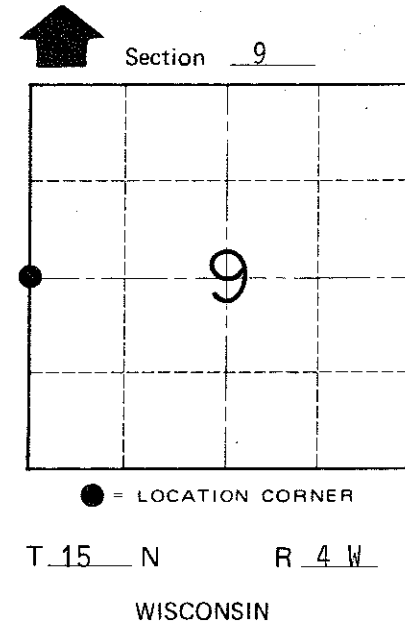
The bearings shown are magnetic hand compass bearings.

No. 36

21504082000



H. A. Sime and Associates
P. O. Box 705, Tomah, WI
Phone: (608)-372-5392



~~City, Village or~~ Town of Portland

County of Monroe