

CERTIFICATE

I, Bryan H. Meyer, do hereby certify that on the 19th day of December, 19 89, I found (evidence) ~~(evidence)~~ of the South 1/4 corner of Section 8, T 15 N, R 4 W Fourth Principal Meridian, and I re-established said corner according to the Wisconsin Statutes as shown and described hereon.

Dated this 22nd day of Dec., 19 89.

Bryan H. Meyer  
Deputy County Surveyor  
Title

CERTIFIED LAND CORNER

History of corner establishment since Original Government Survey

A. B. Holden was here in March of 1880.

Description of corner evidence found:

I accepted the occupied fence corner as the best available evidence.

No. 50

**21504080020**



H. A. Sime and Associates  
P. O. Box 705, Tomah, WI  
Phone: (608)-372-5392

COUNTY SURVEYOR FORM NO. 1

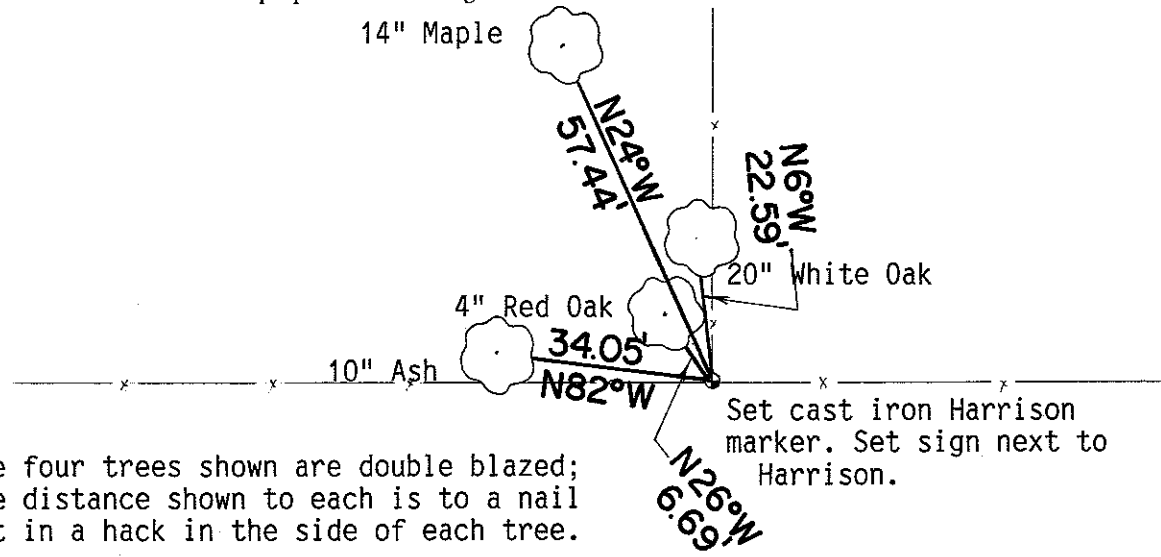
Description of corner and witness monuments, references and accessories used to perpetuate the original or re-established location of this corner:

Crew: Kenworthy, Forsythe  
Date: December 19, 1989

Witnesses to corner location:

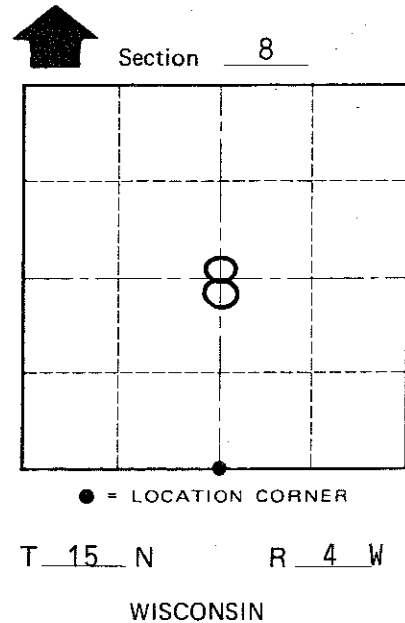
John Kenworthy

Brian Forsythe



The four trees shown are double blazed; the distance shown to each is to a nail set in a hack in the side of each tree.

The bearings shown hereon are magnetic hand compass bearings.



SURVEY CONTROL ORDER

Horizontal	_____
Vertical	_____

WISCONSIN COORDINATE SYSTEM

Corner	East (X)	North (Y)	Elevation (Z)	Zone
Control Sta. Name				

~~City, Village or~~ Town of Portland  
County of Monroe