

CERTIFICATE

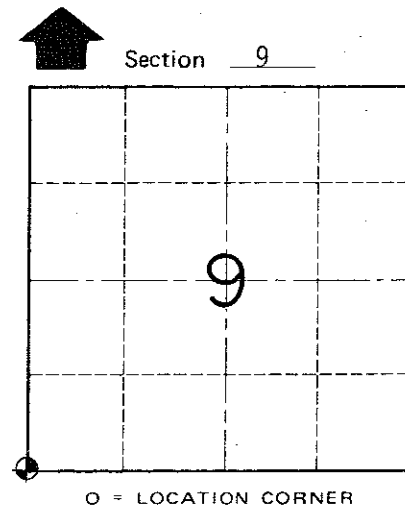
CERTIFIED LAND CORNER

No. 49

21504080000



H. A. Sime and Associates
P. O. Box 705, Tomah, WI
Phone: (608)-372-5392



T 15 N R 4 W
WISCONSIN

History of corner establishment since Original Government Survey

Nothing recorded.

Description of corner evidence found:

I accepted the three-way fence corner as the best available evidence.

I, Bryan H. Meyer, do hereby certify that on the 27th day of December 19 89, I found (evidence) of the Southwest corner of Section 9, T 15 N, R 4 W Fourth Principal Meridian, and I re-established said corner according to the Wisconsin Statutes as shown and described hereon.

Dated this 29th day of Dec. 19 89.

Bryan H. Meyer
Deputy County Surveyor

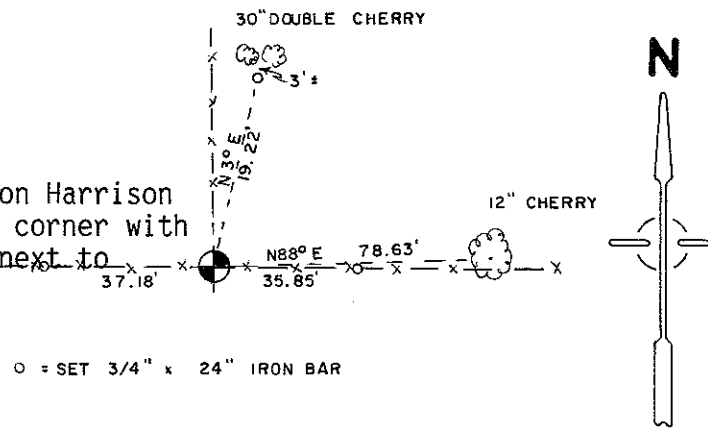
Description of corner and witness monuments, references and accessories used to perpetuate the original or re-established location of this corner:

Crew: Kenworthy, Forsythe
Date: December 27, 1989

Witnesses to corner location:

Brian Forsythe
John Kenworthy
Bryan H. Meyer

Set Cast Iron Harrison Monument at corner with guard sign next to monument.



o = SET 3/4" x 24" IRON BAR

Note: the bearings shown hereon are magnetic hand compass bearings.

Note: The 12" Cherry shown is double blazed; the distance shown to it is to a nail set in a hack in the side of the tree.

SURVEY CONTROL ORDER

Table with 2 rows: Horizontal, Vertical

WISCONSIN COORDINATE SYSTEM

Table with 5 columns: Corner, East (X), North (Y), Elevation (Z), Zone

City/Village or Town of Portland

County of Monroe

COUNTY SURVEYOR FORM NO. 1