

CERTIFICATE

CERTIFIED LAND CORNER

No. 35

21504072000

I, Gary L. Dechant, do hereby certify that on the 19th day of November 1986, I found (evidence) (~~no evidence~~) of the E 1/4 corner of Section 7, T 15 N, R 4 W Fourth Principal Meridian, and I re-established said corner according to the Wisconsin Statutes as shown and described hereon.

History of corner establishment since Original Government Survey

No known recorded history since the original government survey.

Description of corner evidence found:

Replaced 1 1/4" round iron bar, set by us in October, with a Harrison monument at the intersection of fences. Fits distance to section corners very well.

Dated this 17th day of Dec. 1986.

Gary L. Dechant

Registered Land Surveyor, 1744
Title

COUNTY SURVEYOR FORM NO. 1

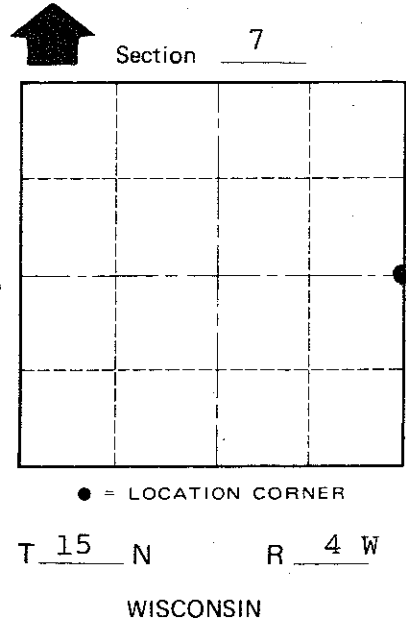
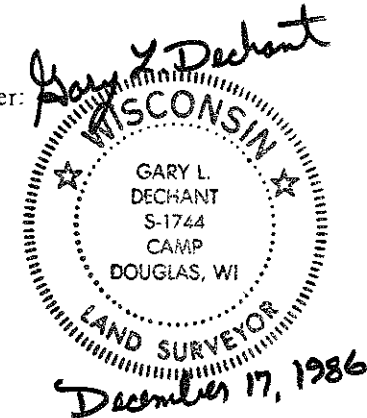
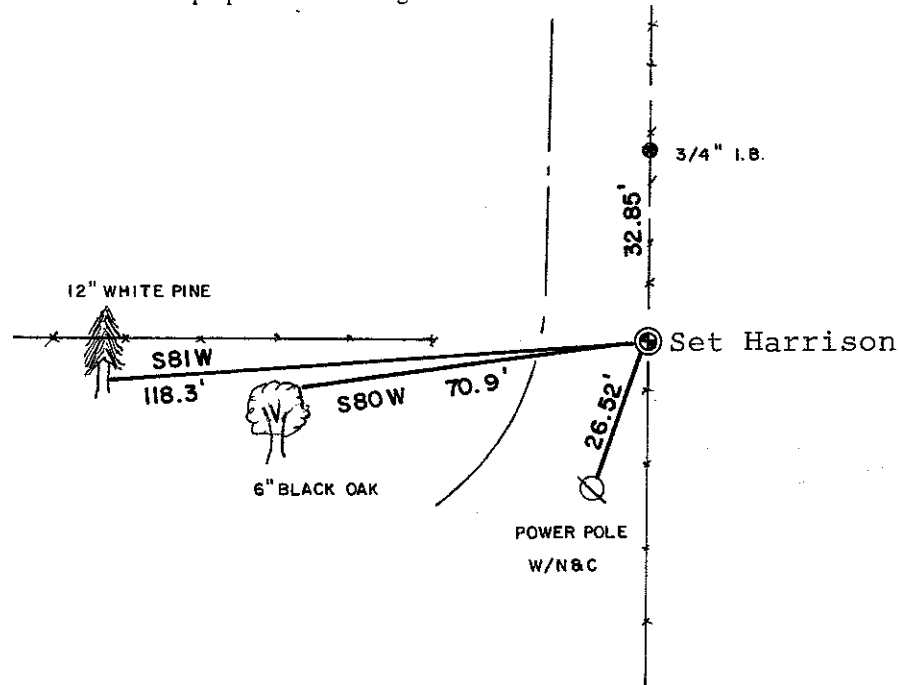
Description of corner and witness monuments, references and accessories used to perpetuate the original or re-established location of this corner:

Witnesses to corner location:

David E. Madison

Lawrence A. Feddersen

Gary L. Dechant



(Trees doubleblazed with N&C's set)

SURVEY CONTROL ORDER

Horizontal	_____
Vertical	_____

WISCONSIN COORDINATE SYSTEM

Corner	East (X)	North (Y)	Elevation (Z)	Zone
Control Sta. Name				

~~City, Village or~~ Town Portland
County of Monroe