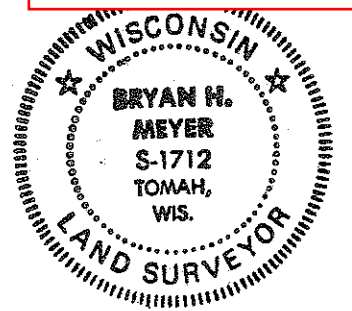


CERTIFICATE

CERTIFIED LAND CORNER

No. 16

21504052000



H. A. Sime and Associates  
P. O. Box 705, Tomah, WI  
Phone: (608)-372-5392

I, Bryan H. Meyer, do hereby certify that on the 3rd day of December 19 89, I found (evidence) ~~no evidence~~ of the West 1/4 corner of Section 4, T 15 N, R 4 W Fourth Principal Meridian, and I re-established said corner according to the Wisconsin Statutes as shown and described hereon.

Dated this 7th day of Dec. 19 89.

*Bryan H. Meyer*

Deputy County Surveyor

History of corner establishment since Original Government Survey

O. R. Dahl was here in August of 1868. Fred A. Holden was here in April of 1905 and found both original bearing tree stumps. He then struck a new bearing tree.

Description of corner evidence found:

I found a large Elm tree stump cut off approximately 6 feet high with what appears to be a scar on it's West side. It appears to me that whomever cut the tree down was aware that it was a bearing tree and I believe that is why it is cut off so high. I went Holden's bearing (assumed true) and distance from the stump and set this corner. My corner falls 5'± South of the occupied corner (fence corner).

Description of corner and witness monuments, references and accessories used to perpetuate the original or re-established location of this corner:

Crew: Meyer, Kenworthy, Forsythe  
Date December 3, 1989

Witnesses to corner location:

Bryan H. Meyer

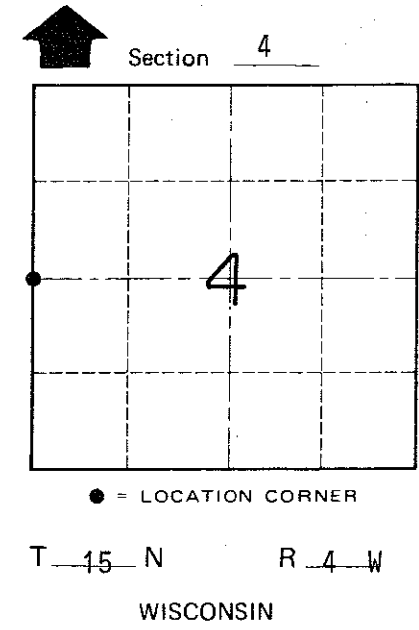
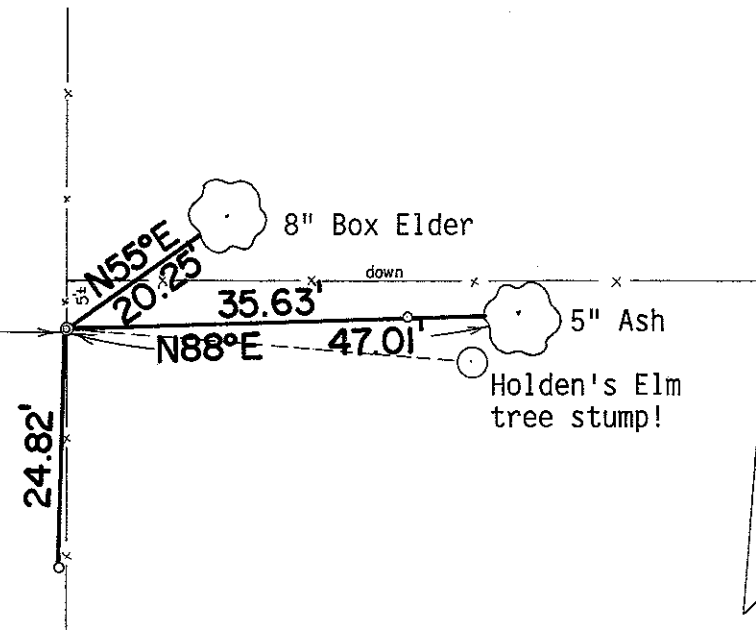
John Kenworthy

Brian Forsythe

Set cast iron Harrison marker.  
Set sign next to Harrison.

Both of the trees shown are double blazed; the distance shown to each is to a nail set in a hack in the side of each tree.

The bearings shown hereon are magnetic hand compass bearings.



o = Set 3/4"x24" round iron bar

WISCONSIN COORDINATE SYSTEM

SURVEY CONTROL ORDER

Horizontal	_____
Vertical	_____

Corner	East (X)	North (Y)	Elevation (Z)	Zone
Control Sta. Name				

~~City, Village or~~ Town of Portland

County of Monroe

COUNTY SURVEYOR FORM NO. 1