

--REVISED DUE TO SURVEY ERROR--
CERTIFIED LAND CORNER

I, LAWRENCE A. FEDDERSEN, do hereby certify that on the ELEVENTH day of November 1997, I found the S 1/4 corner of Section 1, T15N-R4W, Fourth Principal Meridian, set in error and I re-established said corner according to the Wisconsin Statutes as shown and described hereon.

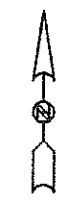
Revised this 11th day of November, 1997.

Lawrence A. Feddersen

REGISTERED LAND SURVEYOR
TITLE

History of corner establishment since Original Government Survey
A.S Ingalls was here in May of 1873.

Gary Dechant re-established this corner in December of 1984 under the direction of Lawrence A. Feddersen. This corner was found to have been set erroneously due to an error in office calculations. On November eleventh, 1997, Kelly D. Callaway and I reset this corner at half the distance between the SE corner and the SW corner of said Section 1 as was the intent of the previously set corner.



Description of corner evidence found:

Reset corner at calculated position using single proportionate measurement. The original survey distances to section corners are 16.15' longer.

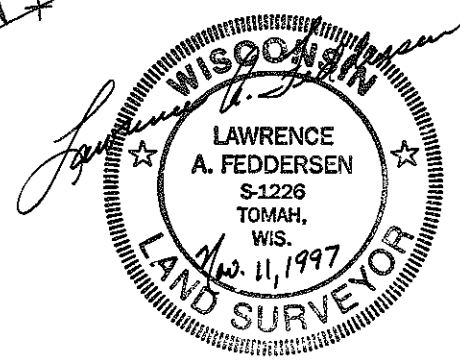
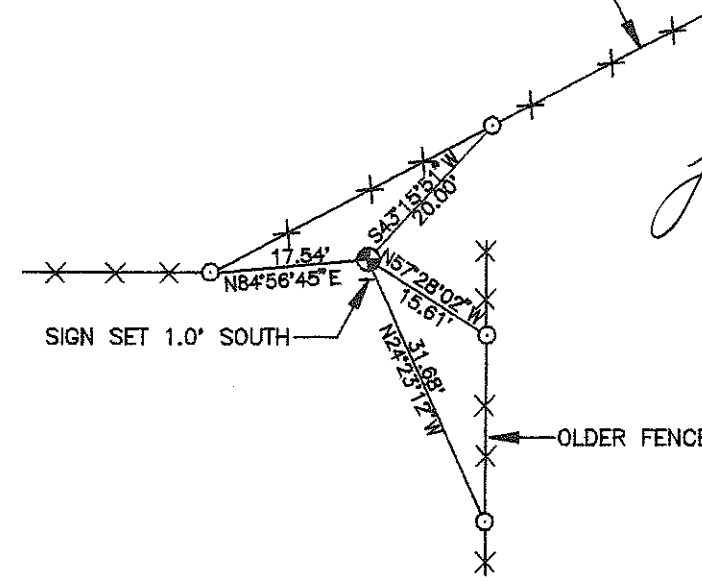
Description of corner and witness monuments, references and accessories used to perpetuate the original or re-established location of this corner:

Witnesses to corner location:

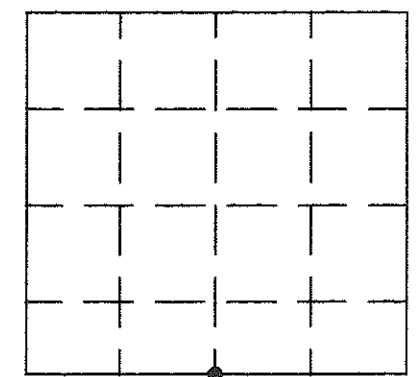
LAWRENCE A. FEDDERSEN

KELLY D. CALLAWAY

NEWER FENCE WITH WOOD & STEEL FENCE POSTS



Section 1, T15N, R4W



● = LOCATION OF CORNER

- = SET 3/4" X 24" ROUND IRON BAR WEIGHING 1.50 LBS./LIN. FT.
- ⊕ = SET CAST IRON HARRISON MONUMENT

SURVEY CONTROL ORDER

HORIZONTAL				
VERTICAL				
CORNER	EAST (X)	NORTH (Y)	ELEVATION (Z)	ZONE
CONTROL STA. NAME				

TOWN OF PORTLAND,
MONROE COUNTY, WI