

21503360020

I, William C. Jung, do hereby certify that on the 6th day of April 1984, I found (evidence) ~~(no evidence)~~ of the South 1/4 corner of Section 36, T 15 N, R 3 W, Fourth Principal Meridian, and I re-established said corner according to the Wisconsin Statutes as shown and described hereon.

Dated this 8th day of May 1984.

William C. Jung

Deputy County Surveyor, R.L.S. 1323

Title

History of corner establishment since Original Government Survey

In November and December of 1899, Schroeder and/or La Rue from the Monroe County Surveyor's Office were at this corner. They found an old white oak stump which appears to have been an original bearing tree. They set the 1/4 corner and made new bearing trees: 5" white oak, N67°W, 23.5 links and a 10" white oak, N32°E, 65 links. They set an iron shaft, 1 1/2" in diameter and 14" ^{long} with a 3" shoulder at the top and stamped on the side "1/4S".

William Knowler, Vernon County Surveyor, appears to have set this corner by single proportionate measurement in January and February of 1882. He made new bearing trees: 5" white oak, N18 1/2°W, 39 links and a 5" white oak, N57°E, 53 links.

This appears to be a double corner from years ago! I found both corners and remains of all the bearing trees. I found and used the monument set by the surveyors from Monroe County because it would seem that they found an original bearing tree.

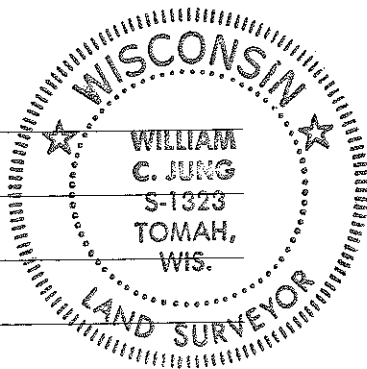
Bearings shown on this tie sheet are magnetic using a hand compass.

Description of corner and witness monuments, references and accessories used to perpetuate the original or re-established location of this corner:

Witnesses to corner location:

William C. Jung

Dennis Perrigo

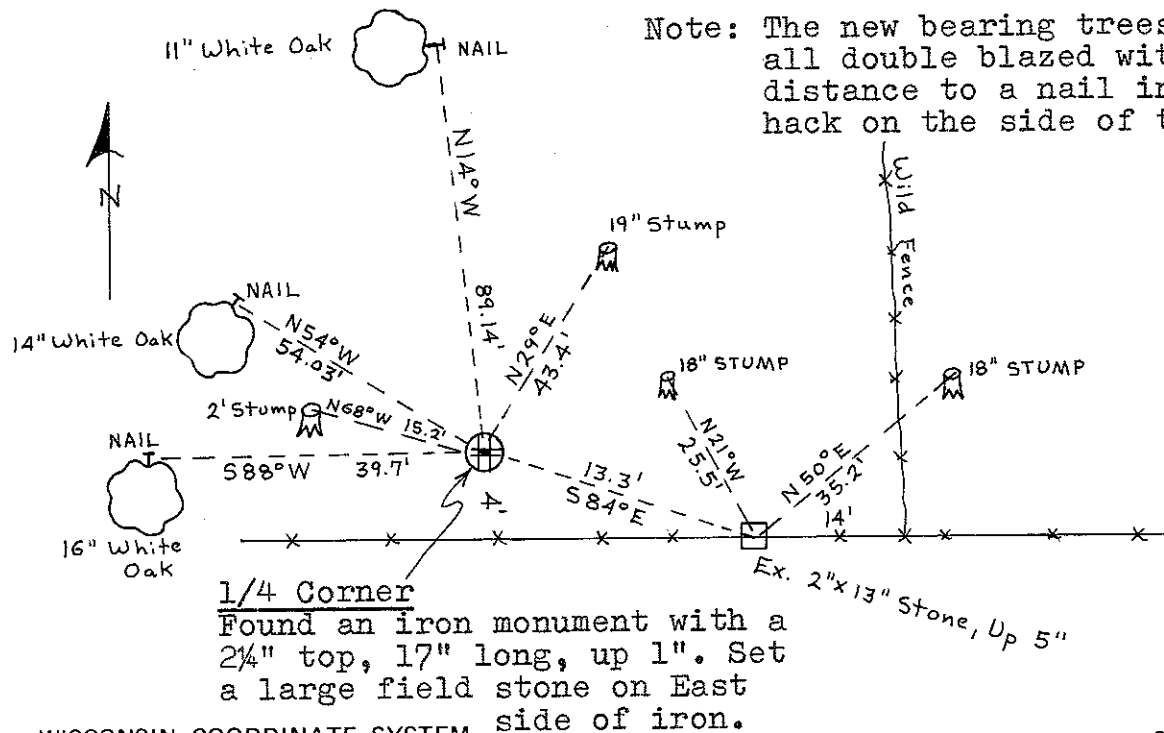


Approved: Harley Sime
County Surveyor

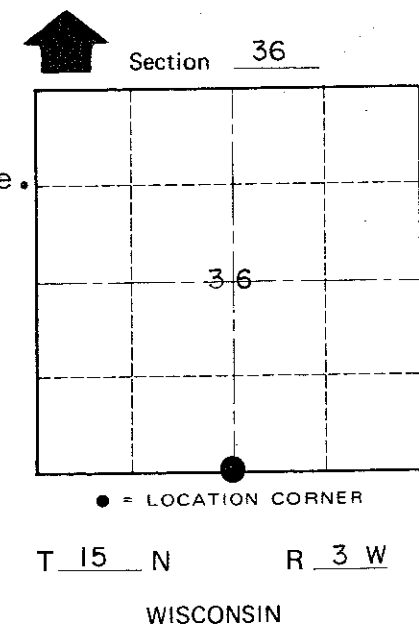
SURVEY CONTROL ORDER

Horizontal _____

Vertical _____



1/4 Corner
Found an iron monument with a 2 1/4" top, 17" long, up 1". Set a large field stone on East side of iron.



WISCONSIN COORDINATE SYSTEM

Corner	East (X)	North (Y)	Elevation (Z)	Zone
Control Sta. Name				

City, Village or Town Jefferson
County of Monroe
Wisconsin