

21503360000

I, William C. Jung, do hereby certify that on the 16th day of April 1984, I found (evidence) ~~no evidence~~ of the Southwest corner of Section 31, T 15 N, R 2 W Fourth Principal Meridian, and I re-established said corner according to the Wisconsin Statutes as shown and described hereon.

Dated this 8th day of May 1984.

William C. Jung

Deputy County Surveyor, R.L.S. 1323
Title

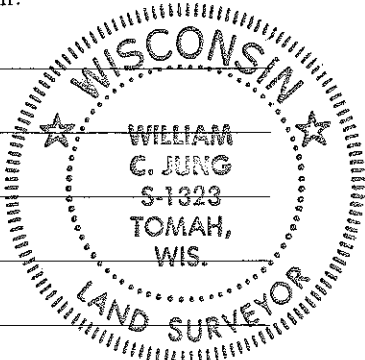
History of corner establishment since Original Government Survey

Vernon County records show a surveyor at this corner in May of 1873. Wm. Knower, Vernon County Surveyor, shows this corner in a survey done in April of 1878. Knower was again at this corner in a survey done in February of 1882. He calls for an existing "government" corner. Schroeder and/or LaRue from the Monroe County Surveyor's office in November and December of 1899 were at this corner and set the corner after a very lengthy survey. They set and buried an old bell casting having the hub of a wheel and broken off spokes projecting about 6" each way to show the directions of the lines. On April 16 of 1984 I found this old monument as described in the Monroe County records, removed it, and set a Harrison marker by the East-West fence. I accepted Schroeder/LaRue's work as being correct. It took a great deal of work to find this old monument as it was buried. I believe that there was disagreement between the old Vernon and Monroe County Surveyors as to the true location of this corner. Knower came back again in June of 1900 and "renewed" his corner. Maybe Schroeder and LaRue buried their corner to hide it? There can be no other explanation as the corner is on a sidehill up in the woods. I am convinced that there was a double corner back in June of 1900.

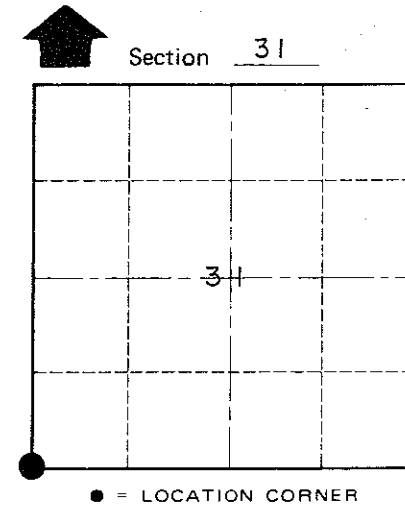
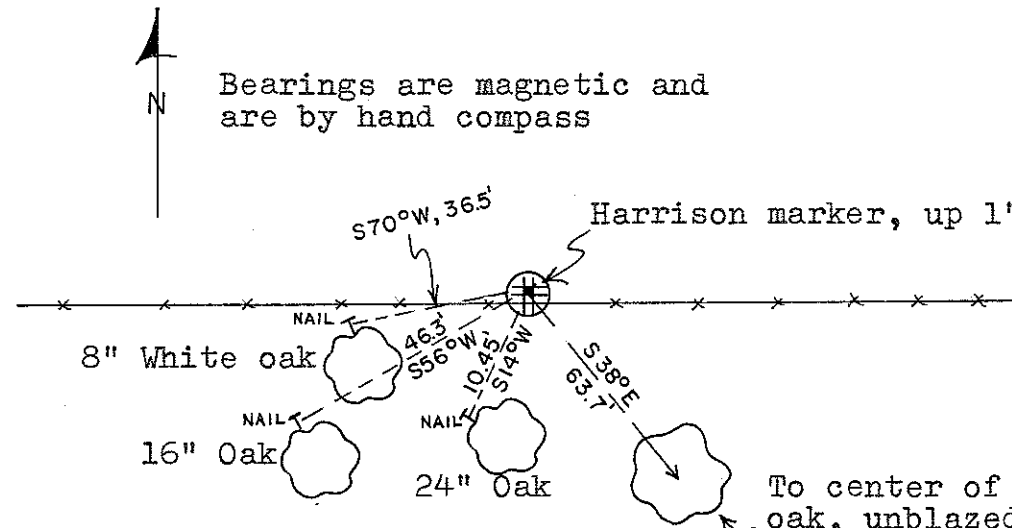
Description of corner and witness monuments, references and accessories used to perpetuate the original or re-established location of this corner:

Witnesses to corner location:

William C. Jung



Approved: Harley Sime
County Surveyor



Note: Unless noted, all bearing trees are double blazed with each distance to a nail in a hack on the side of the tree.

To center of 30" white oak, unblazed, which appears to have an old blaze on the NW side. T 15 N R 2 W WISCONSIN

COUNTY SURVEYOR FORM NO. 1

SURVEY CONTROL ORDER

Horizontal	_____
Vertical	_____

WISCONSIN COORDINATE SYSTEM

Corner	East (X)	North (Y)	Elevation (Z)	Zone
Control Sta. Name				

~~City, Village~~ or Town Sheldon
County of Monroe
Wisconsin