

CERTIFICATE

CERTIFIED LAND CORNER

No. 119

21503352000

I, Gary L. Dechant, do hereby certify that on the 27th day of October 1998, I found (evidence) (~~no evidence~~) of the E/4 corner of Section 35, T 15 N, R 3 W Fourth Principal Meridian, and I re-established said corner according to the Wisconsin Statutes as shown and described hereon.

History of corner establishment since Original Government Survey

Schroeder & LaRue was here in 1899.

Description of corner evidence found:

Set in north-south fence line intersected with the W/4 and occupied C/4 corners of Section 35. Fits conditions on the east line of Section 35 extremely well.

Dated this 4 day of Nov. 1998.

Gary L. Dechant

R.L.S. 1744
Title

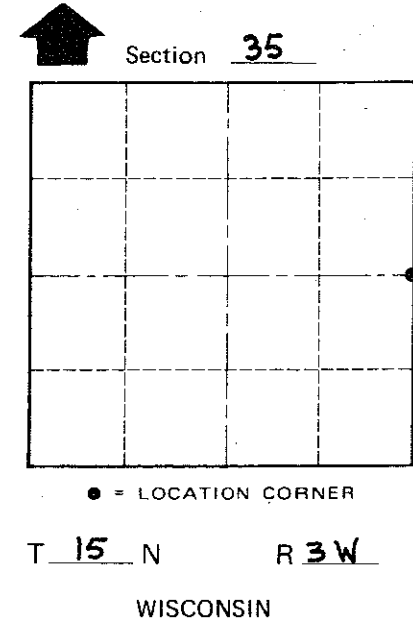
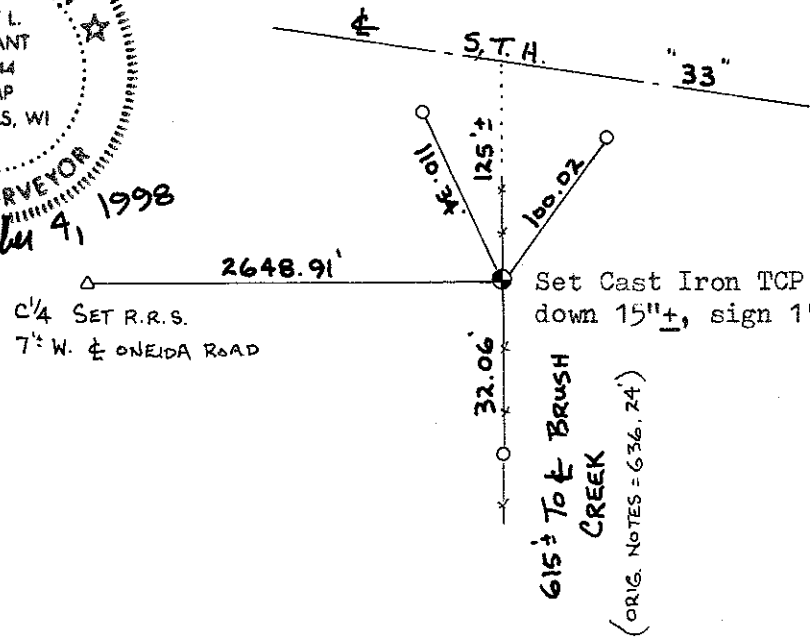
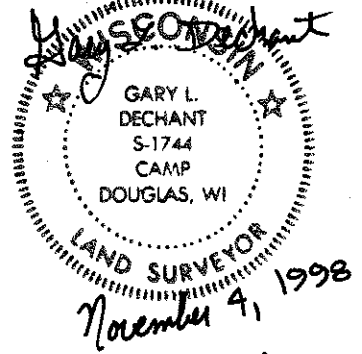
COUNTY SURVEYOR FORM NO. 1

Description of corner and witness monuments, references and accessories used to perpetuate the original or re-established location of this corner:

Witnesses to corner location:

David E. Madison

Gary L. Dechant



SURVEY CONTROL ORDER

Horizontal	_____
Vertical	_____

WISCONSIN COORDINATE SYSTEM

Corner	East (X)	North (Y)	Elevation (Z)	Zone
Control Sta. Name				

City, Village or Town JEFFERSON

County of MONROE