

CERTIFICATE

CERTIFIED LAND CORNER

No. 123

**21503350000**

I, Gary L. Dechant, do hereby certify that on the 27th day of October 1998, I found ~~(evidence)~~ (no evidence) of the SE corner of Section 35, T 15 N, R 3 W Fourth Principal Meridian, and I re-established said corner according to the Wisconsin Statutes as shown and described hereon.

Dated this 4th day of Nov. 1998.

*Gary L. Dechant*

R.L.S. 1744  
Title

History of corner establishment since Original Government Survey

H. Schroeder & H. LaRue was here in 1899, Monroe County Records. Vernon County Records Book 1, P. 80 shows a surveyor, name unknown, at this corner in 1873. Knower as here in 1882 as shown in Book 1, P. 172 and again in 1896 shown in Book 2 P. 1 & 2.

Description of corner evidence found:

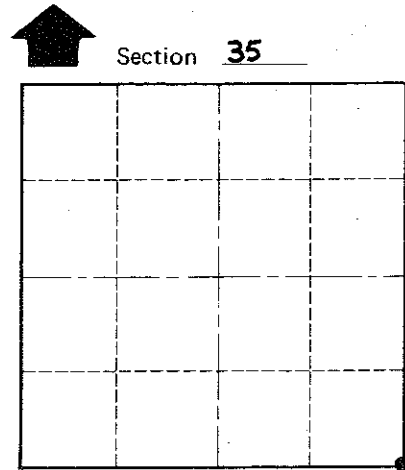
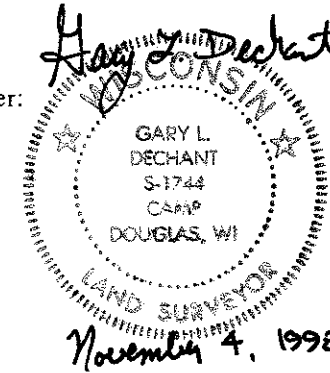
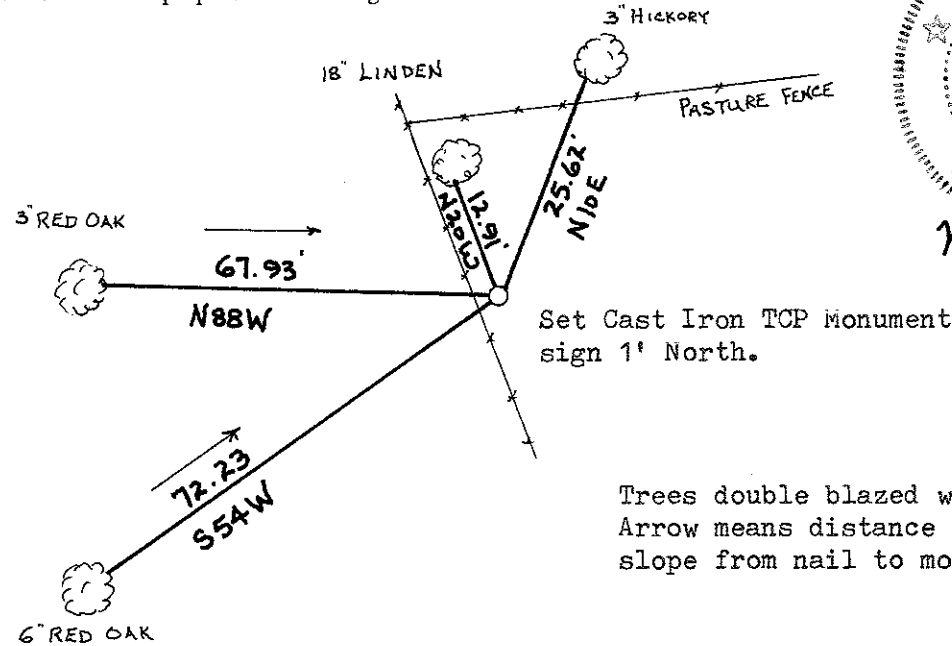
Set corner on line and at prorated distances between the SW corner of Section 35 and the S<sup>1</sup>/<sub>4</sub> corner of Section 36. Fits conditions in section 35 very well. The occupied fence at the NE corner of the SE<sup>1</sup>/<sub>4</sub>-SE<sup>1</sup>/<sub>4</sub> fitting within 2' north and south.

COUNTY SURVEYOR FORM NO. 1

Description of corner and witness monuments, references and accessories used to perpetuate the original or re-established location of this corner:

Witnesses to corner location:

David E. Madison  
Gary L. Dechant



● = LOCATION CORNER

T 15 N R 3 W

WISCONSIN

Trees double blazed with 40d nails set. Arrow means distance taken direct slope from nail to monument.

SURVEY CONTROL ORDER

Horizontal \_\_\_\_\_  
Vertical \_\_\_\_\_

WISCONSIN COORDINATE SYSTEM

Corner	East (X)	North (Y)	Elevation (Z)	Zone
Control Sta. Name				

City, Village or Town JEFFERSON

County of MONROE