

CERTIFICATE

I, Bryan H. Meyer, do hereby certify that on the 23rd day of March 19 98, I found (evidence) ~~on the~~ of the South 1/4 corner of Section 34, T 15 N, R 3 W Fourth Principal Meridian, and I re-established said corner according to the Wisconsin Statutes as shown and described hereon.

Dated this 8th day of Jan. 19 99.

*Bryan H. Meyer*

Deputy County Surveyor  
Title

CERTIFIED LAND CORNER

History of corner establishment since Original Government Survey

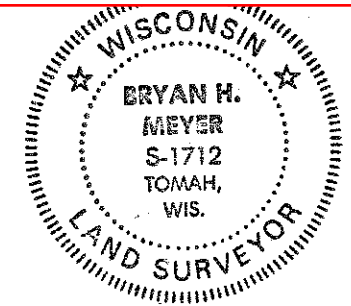
Webster Kenyon, Monroe County Surveyor, was here in November of 1893.

Description of corner evidence found:

I accepted the occupied three-way fence corner as the best available evidence of the corner location.

No. 126

**21503340020**



Bryan H. Meyer  
H. A. Sime and Associates  
P. O. Box 50  
Tomah, Wisconsin 54660  
Phone: (608)-372-5392

COUNTY SURVEYOR FORM NO. 1

Description of corner and witness monuments, references and accessories used to perpetuate the original or re-established location of this corner:

Crew: Meyer, Malliet  
Date: March 23, 1998 - 1:00 p. m.  
Weather: Partly cloudy, 37°±  
Witnesses to corner location:

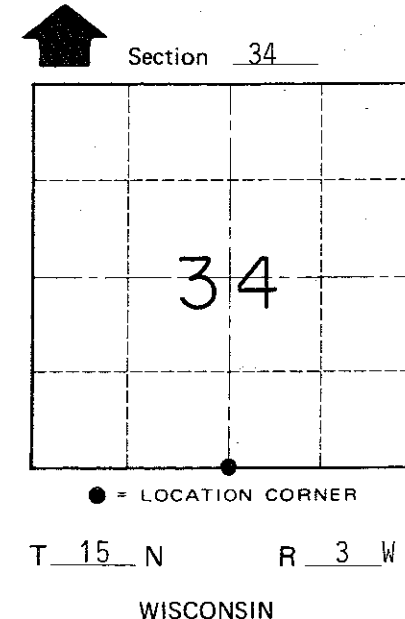
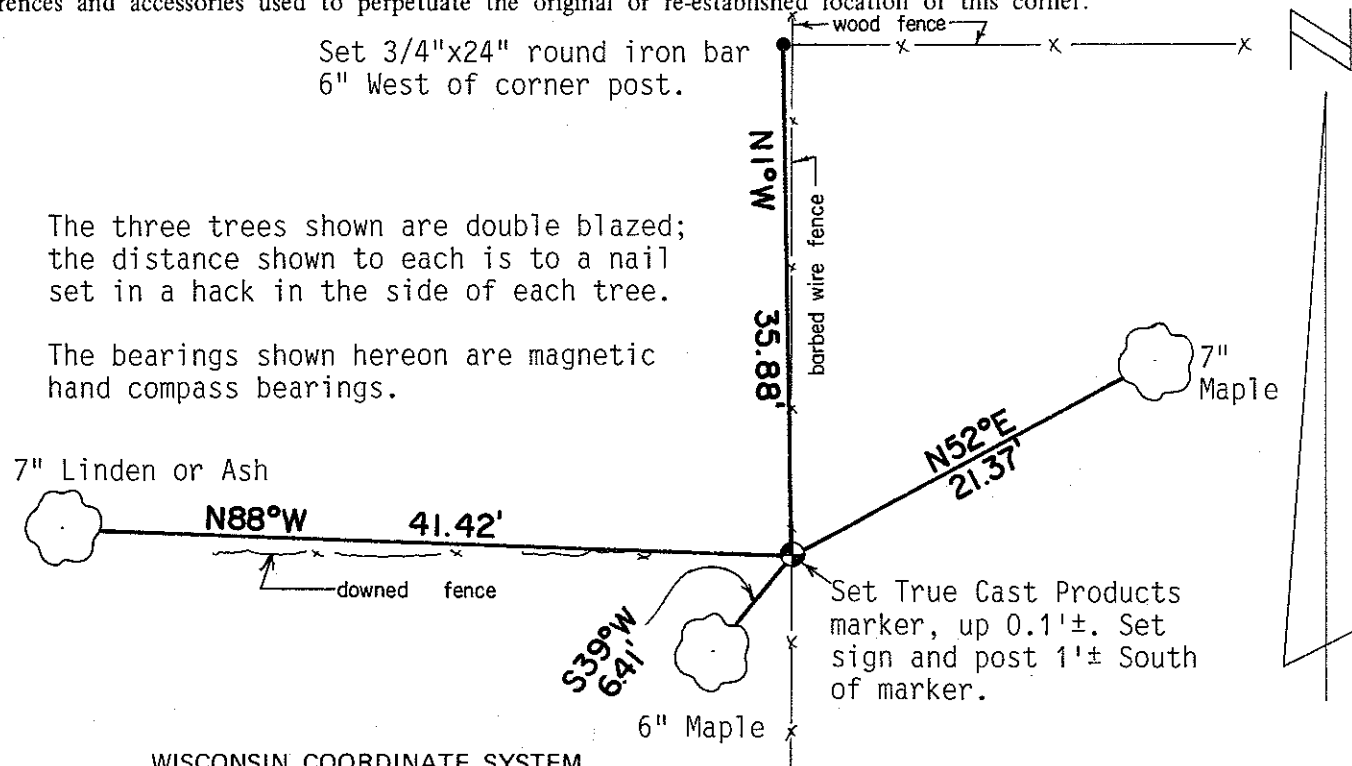
Bryan H. Meyer

Doug Malliet

Set 3/4"x24" round iron bar  
6" West of corner post.

The three trees shown are double blazed;  
the distance shown to each is to a nail  
set in a hack in the side of each tree.

The bearings shown hereon are magnetic  
hand compass bearings.



SURVEY CONTROL ORDER

Horizontal	_____
Vertical	_____

WISCONSIN COORDINATE SYSTEM

Corner	East (X)	North (Y)	Elevation (Z)	Zone
Control Sta. Name				

~~City, Village or~~ Town of Jefferson

County of Monroe