

21503322000

I, William C. Jung, do hereby certify that on the 22nd day of December 1981, I found ~~(evidence)~~ (no evidence) of the West 1/4 corner of Section 33, T 15 N, R 3 W, Fourth Principal Meridian, and I re-established said corner according to the Wisconsin Statutes as shown and described hereon.

History of corner establishment since Original Government Survey
Fred Holden set an iron pipe at this corner in May of 1901.

Dated this 24th day of Dec. 1981.

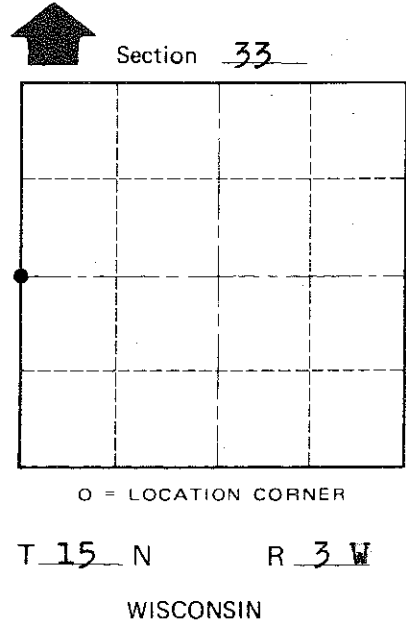
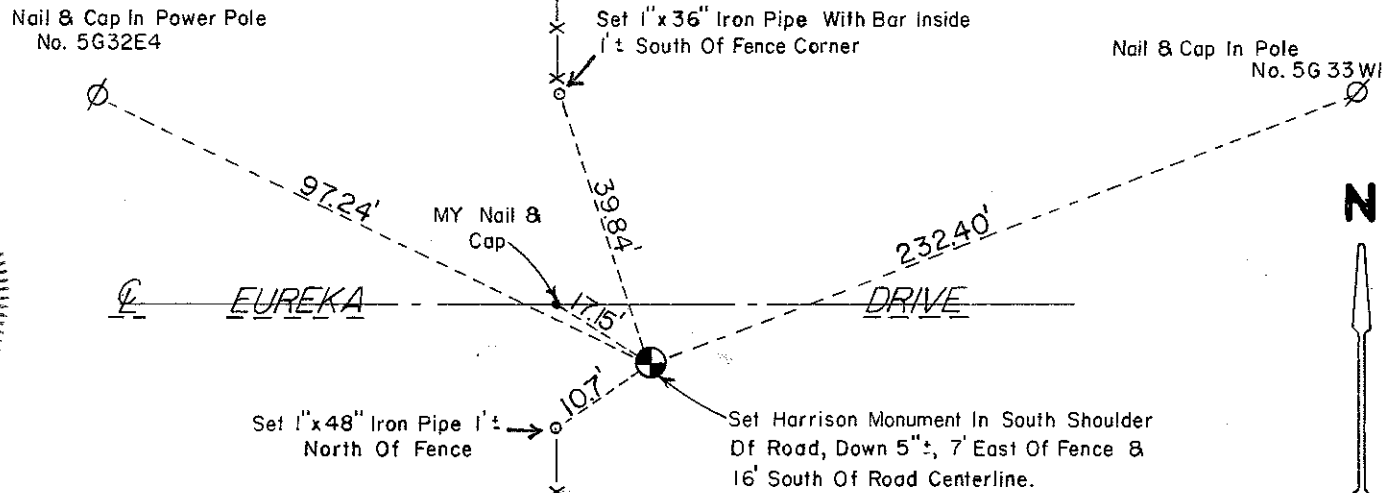
William C. Jung

Registered Land Surveyor 1323
Title

William C. Jung

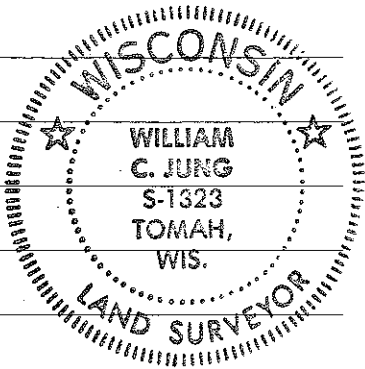
Description of corner evidence found: I could not find Holden's iron pipe at this corner, but I did find his iron pipe and bearing tree at the West 1/16 Southwest corner of Section 33. The bearing from the latter iron pipe to the occupied corner at the W1/16NW corner matched perfectly the bearing from the W1/16NW corner to the Northwest corner of Section 33. Set the corner on line between the Northwest corner and the W1/16SW corner and at a proportionate distance between them. This location fits the overall pattern found in Sections 32 and 33. In my final distances along the West line of Section 33 and the East-West quarter line of Section 32, I consistently came up with distances that measured over 3 feet longer per forty than Holden's. West line Section 33: Measured = 5313.48 feet; Holden = 5299.80 feet. East-West 1/4 line Section 32; measured = 5302.97 feet; Holden = 5290.56 feet.

Description of corner and witness monuments, references and accessories used to perpetuate the original or re-established location of this corner:



Witnesses to corner location:

Jung
Meyer
Dechant



Approved: HARLEY A. SIME
MONROE CO. SURVEYOR

SURVEY CONTROL ORDER

Horizontal _____
Vertical _____

WISCONSIN COORDINATE SYSTEM

Corner	East (X)	North (Y)	Elevation (Z)	Zone
Control Sta. Name				

~~Village~~ Town Jefferson
County of Monroe
Wisconsin

COUNTY SURVEYOR FORM NO. 1