

21503312000

I, Garold A. Sime, do hereby certify that on the 10th day of June 1981, I found (evidence) ~~(evidence)~~ of the East 1/4 corner of Section 31, T15 N, R3 W Fourth Principal Meridian, and I re-established said corner according to the Wisconsin Statutes as shown and described hereon.

Dated this 13th day of July 1981.

Garold A. Sime, R.L.S. 1261

County Surveyor's Office

Garold A. Sime

History of corner establishment since Original Government Survey

Fred Holden shows a 2" iron pipe here in May of 1901.

Description of corner evidence found:

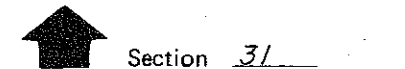
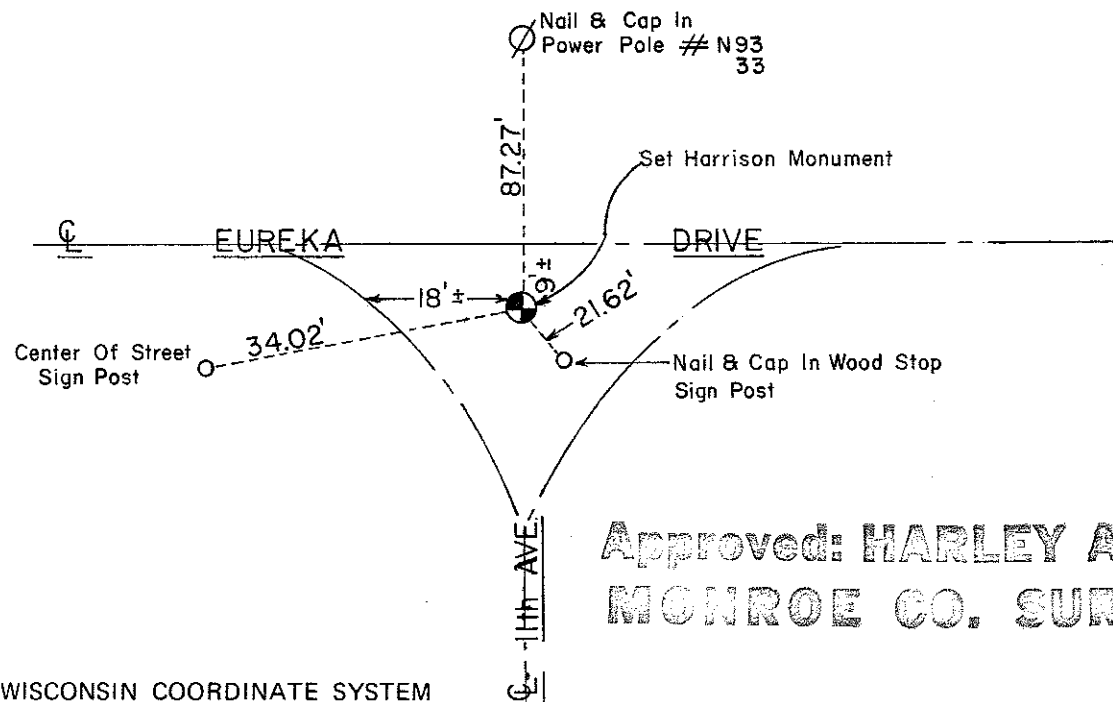
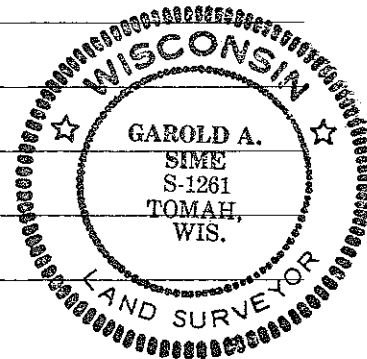
Found Holden's 2" pipe down 42", set Harrison monument over the pipe.

Description of corner and witness monuments, references and accessories used to perpetuate the original or re-established location of this corner:

Witnesses to corner location:

G. Sime

C. Pietz



Section 31

O = LOCATION CORNER

T 15 N R 3 W

WISCONSIN

Approved: **HARLEY A. SIME**
MONROE CO. SURVEYOR

SURVEY CONTROL ORDER

Horizontal	_____
Vertical	_____

WISCONSIN COORDINATE SYSTEM

Corner	East (X)	North (Y)	Elevation (Z)	Zone
Control Sta. Name				

~~Jefferson~~ Town Jefferson
County of Monroe
Wisconsin

COUNTY SURVEYOR FORM NO. 1