

U.S. LAND CORNER MAINTENANCE

Corner ID : E¼ Sec. 30, T15N-R3W
21503302000

<u>DATE</u>	<u>CREW</u>	<u>MONUMENT TYPE</u> -----
May, 18, 2010	Zachariah P. Dechant Gary L. Dechant	Existing cast iron Harrison We placed 6' anchor and concrete around Harrison . Set survey sign 1' north. Falls on west side of cemetery

References:

Set 1" iron pipe, down 4"
Set 1" iron pipe, down 12"
Ex. 1" iron pipe, in concrete

<u>Bearing</u>	<u>Distance</u>
North	49.32'
West	39.20'
Southeast	1.3'



21503302000

I, William C. Jung, do hereby certify that on the 13th day of September 1982, I found (evidence) ~~(no evidence)~~ of the East 1/4 corner of Section 30, T 15 N, R 3 W Fourth Principal Meridian, and I re-established said corner according to the Wisconsin Statutes as shown and described hereon.

Dated this 24th day of Feb. 1983.

William C. Jung

Deputy County Surveyor

Title

History of corner establishment since Original Government Survey

In January of 1892 W. Kenyon shows and calls for this corner in Volume 3 Plats, Page 5. In January of 1931 Henry Schroeder shows and calls for this corner in Volume 4 Plats, Page 27. In September of 1971 Harley Sime calls for a steel post at this corner.

Description of corner evidence found:

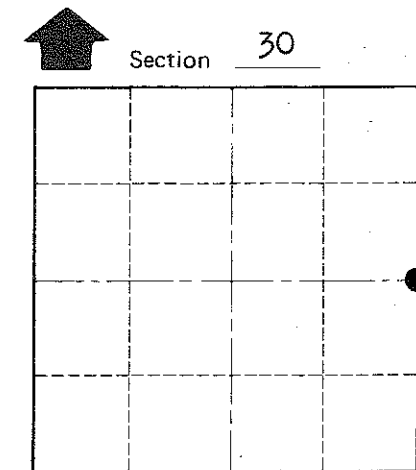
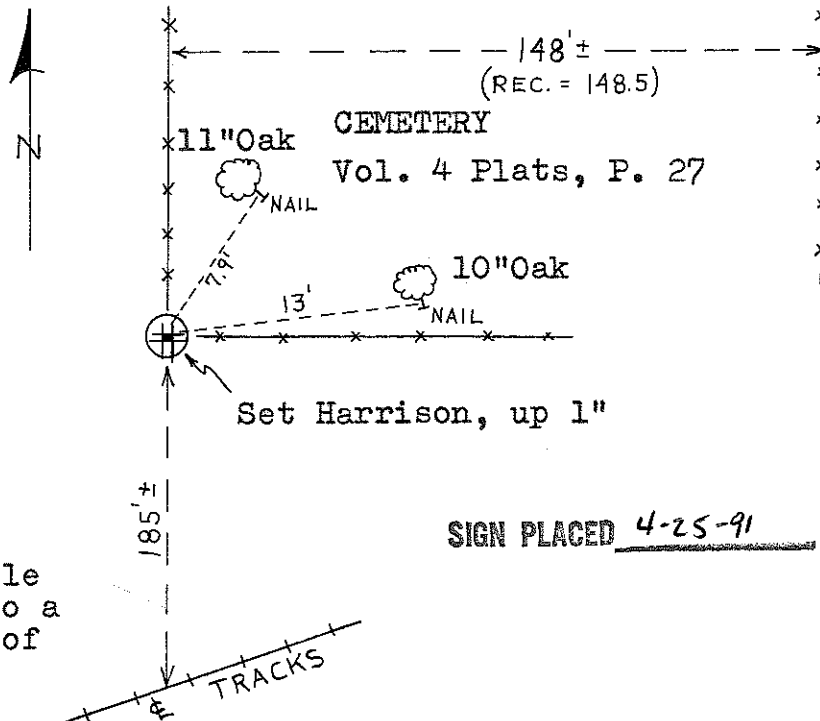
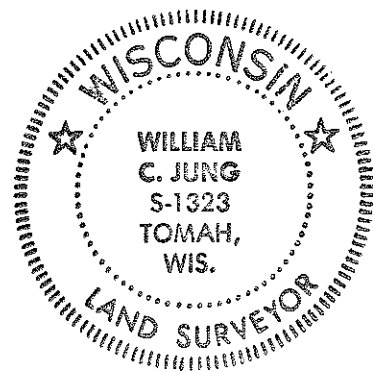
I found a steel fence post set in concrete at the SW corner of the cemetery. I accepted this as the 1/4 corner and set a Harrison marker at the SW corner of the fence post.

Description of corner and witness monuments, references and accessories used to perpetuate the original or re-established location of this corner:

Witnesses to corner location:

William Jung

Melvin Pliner



Approved: **HARLEY A. SIME**
MONROE CO. SURVEYOR

Note: Both bearing trees are double blazed with each distance to a nail in a hack on the side of the tree.

SIGN PLACED 4-25-91

SURVEY CONTROL ORDER

Horizontal	_____
Vertical	_____

WISCONSIN COORDINATE SYSTEM

Corner	East (X)	North (Y)	Elevation (Z)	Zone
Control Sta. Name				

City, Village or Town Jefferson
County of Monroe

COUNTY SURVEYOR FORM NO. 1