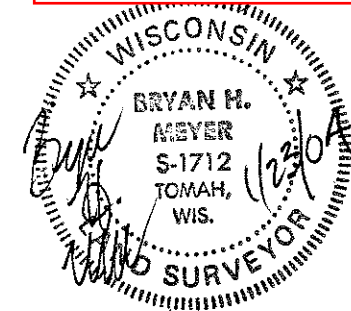


CERTIFICATE

CERTIFIED LAND CORNER

No. 112

21503300020



Bryan H. Meyer - RLS 1712
 H. A. Sime and Associates
 P. O. Box 50, Tomah, WI
 608-372-5392

History of corner establishment since Original Government Survey

Monroe County Surveyor Fred Holden was here in May of 1901 and set an iron shaft at the corner. Clayton Connell was working for the Village of Cashton in 1986 and was most likely at this corner. Rodney Maxwell was here in October of 2000 and shows a railroad spike at the corner. Robert Engelman was here in September of 2002 and shows a railroad spike. Gary Dechant was here in April of 2003 and also shows a railroad spike at the corner.

I, Bryan H. Meyer, do hereby certify that on the 8th day of May, 2003, I found (evidence) ~~(XXXXXX)~~ of the South 1/4 corner of Section 30, T 15 N, R 3 W Fourth Principal Meridian, and I re-established said corner according to the Wisconsin Statutes as shown and described hereon.

Dated this 23rd day of January, 2004.

Bryan H. Meyer

Registered Land Surveyor
Title

DESCRIPTION OF CORNER EVIDENCE FOUND:

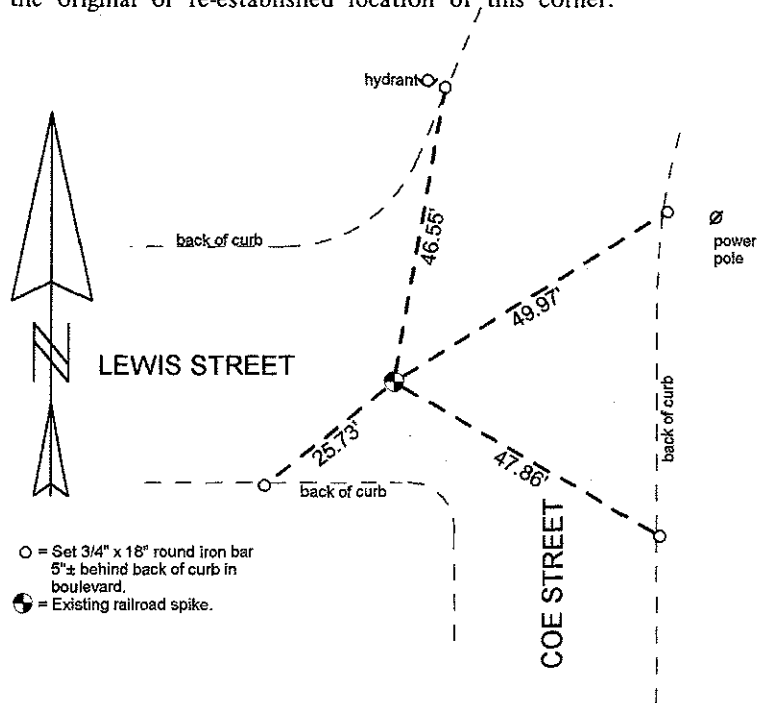
Found the railroad spike as shown on the Maxwell, Engelman and Dechant surveys and accepted its location as the corner. I looked for the iron shaft set by Holden but couldn't find it. It was probably destroyed by road construction. The railroad spike was probably set by Connell when he was doing work for the Village but I was unable to verify this.

Description of corner and witness monuments, references and accessories used to perpetuate the original or re-established location of this corner:

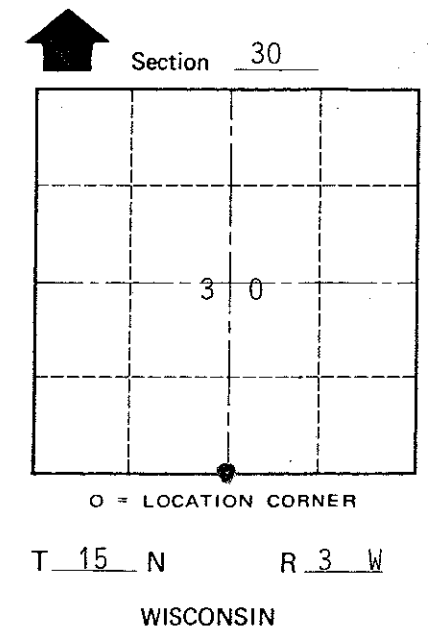
Crew: Meyer, Hibbard
 Date: May 8, 2003 - 8:30 a. m.
 Weather: Sunny, Breezy, 45°
 Witnesses to corner location:

Bryan Meyer

Gerald Hibbard



○ = Set 3/4" x 18" round iron bar 5"± behind back of curb in boulevard.
 ● = Existing railroad spike.



○ = LOCATION CORNER

T 15 N R 3 W

WISCONSIN

COUNTY SURVEYOR FORM NO. 1

SURVEY CONTROL ORDER

Horizontal	_____
Vertical	_____

WISCONSIN COORDINATE SYSTEM

Corner	East (X)	North (Y)	Elevation (Z)	Zone
Control Sta. Name				

~~XXXXXX~~ Town of Jefferson
 County of Monroe