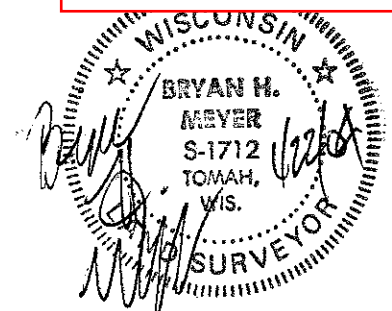


CERTIFICATE

CERTIFIED LAND CORNER

No. 111

21503300000



Bryan H. Meyer
H. A. Sime and Associates
P. O. Box 50
Tomah, Wisconsin 54660

History of corner establishment since Original Government Survey

Monroe County Surveyor Fred Holden was here in May of 1901 and set an iron bar at the corner.

Description of corner evidence found:

I looked for Holden's iron bar but was unable to find it. I set this corner by doubling north the bearing and distance along the East line of the SE $\frac{1}{4}$ -NE $\frac{1}{4}$ of Section 31. This position fits very close to the old corner post.

I, Bryan H. Meyer, do hereby certify that on the 8th day of May 2003, I found (evidence) (~~no evidence~~) of the Southeast corner of Section 30, T 15 N, R 3 W Fourth Principal Meridian, and I re-established said corner according to the Wisconsin Statutes as shown and described hereon.

Dated this 22nd day of January, 2004.

Bryan H. Meyer
Registered Land Surveyor
Title

COUNTY SURVEYOR FORM NO. 1

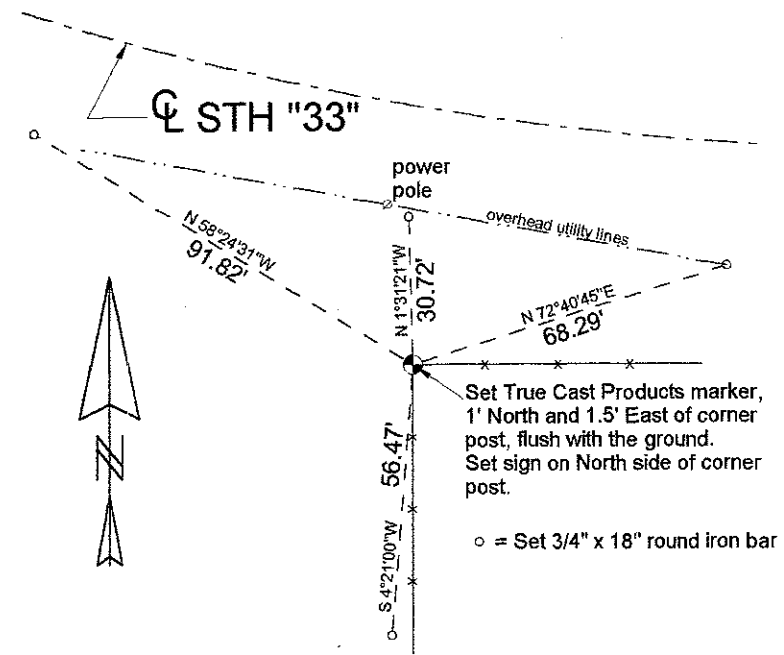
Description of corner and witness monuments, references and accessories used to perpetuate the original or re-established location of this corner:

Crew: B. Meyer, G. Hibbard
Date: May 8, 2003 - 9:30 a.m.
Weather: Sunny, Breezy, 45°

Witnesses to corner location:

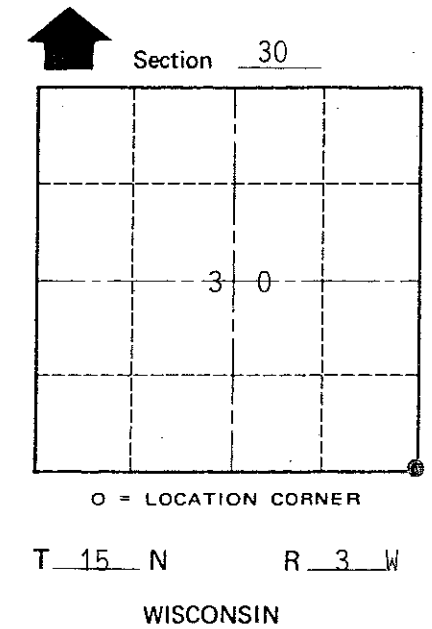
Bryan Meyer

Gerald Hibbard



Set True Cast Products marker, 1' North and 1.5' East of corner post, flush with the ground.
Set sign on North side of corner post.

o = Set 3/4" x 18" round iron bar



SURVEY CONTROL ORDER

Horizontal	_____
Vertical	_____

WISCONSIN COORDINATE SYSTEM

Corner	East (X)	North (Y)	Elevation (Z)	Zone
Control Sta. Name				

City/Village/Town of Jefferson
County of Monroe