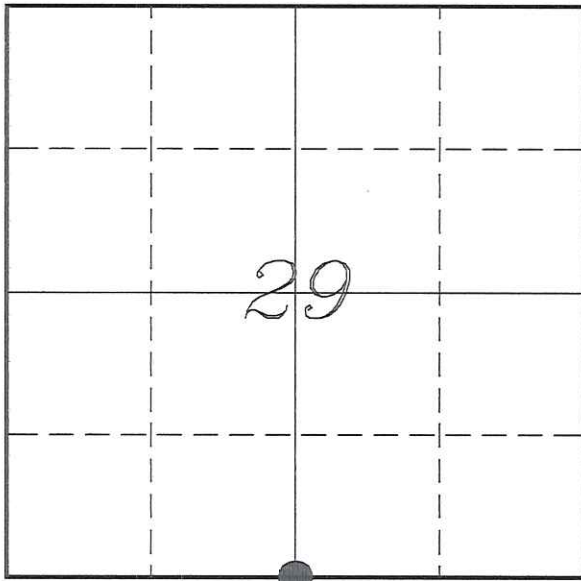


U. S. PUBLIC LAND SURVEY MONUMENT RECORD

SECTION 29, T15N, R3W, TOWN OF JEFFERSON
MONROE COUNTY, WISCONSIN



LOCATION OF LANDMARK

MONROE COUNTY COORDINATE SYSTEM	
Northing	305277.619
Easting	639558.228
Datum	NAD 1983 (2011)
Elevation	
Datum	
TYPE OF LANDMARK:	
Set 1 1/4" x 18" Iron Rod	
BEARINGS ARE REFERENCED TO:	
Monroe County Coordinates	

Witnesses: Laurence E Johns III
Larry Handschy

Date: 20 March 2015

Describe any record evidence, monument evidence, testimonial evidence or any other material evidence you considered and whether the monument was found or restored through acceptance of an obliterated evidence location.

All ties for this corner no longer exist and were destroyed during the reconstruction project.

The coordinates shown on the highway plat match those recorded by the Monroe County Conservation Department.

I re-established this corner based on the surveys in the area and then used the recorded coordinates to verify the location.

Describe or show any material discrepancy between the location of the restored corner and that of the corner previously restored or re-established.

Henry Maddin established this corner in January 1847.

Fred Holden was at this corner, in May 1901, during a survey in Section 32. He shows that this corner as being lost and re-established the corner at proratinal location.

William Jung was at this corner, in August 1976. He shows that he set a Harrison Marker based on Holden's bearing tree and prepared a tie sheet.

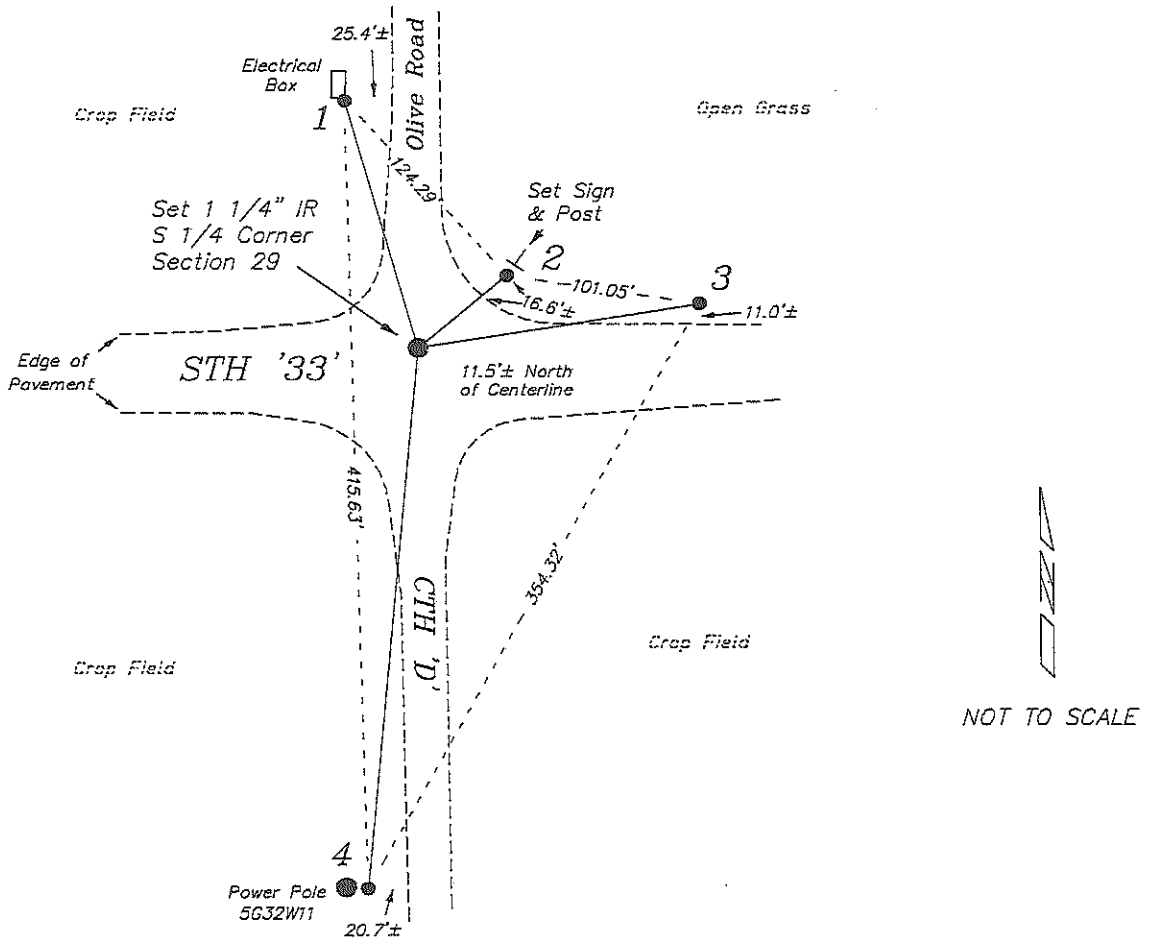
Douglas Malliet was at this corner, in September 1994, during a survey in Section 29. He shows that he found a Harrison Monument.

Jonathan Schmitz was at this corner, in August 2007 and again in July 2014, during surveys in Section 29. He shows that he found a Harrison Monument.

During the summer of 2014 this corner was destroyed during a highway widening project for STH '33'

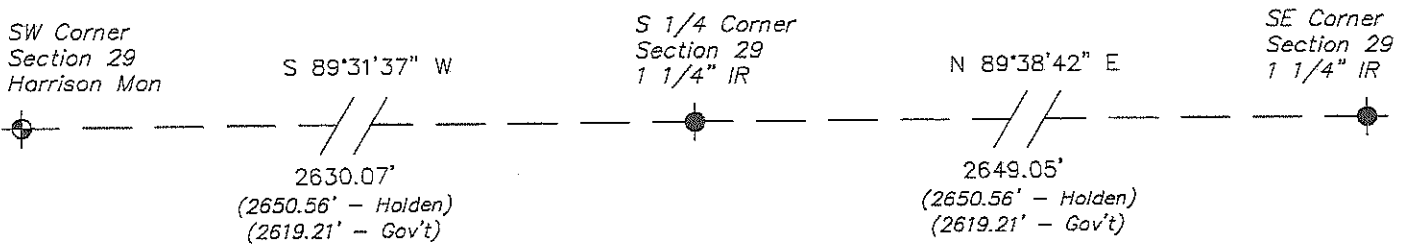
RECORD OF DURABLE WITNESS MONUMENTS

NO	DESCRIPTION	BEARING	DISTANCE
1	Set 3/4" x 18" Iron Rod 1' South of Electrical Box	N 16°08'57" W	135.31'
2	Existing 3/4" Iron Rod Right-of-Way Marker	N 50°23'55" E	60.04'
3	Existing 3/4" Iron Rod Right-of-Way Marker	N 80°58'15" E	148.02'
4	Set 3/4" x 18" Iron Rod 1' East of Power Pole 5G32W11	S 05°31'16" W	286.87'



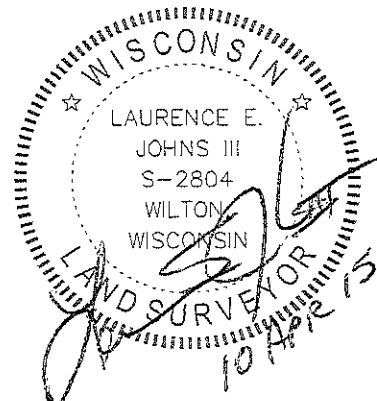
PLAN VIEW DRAWING OF REFERENCE TIES

Map Showing Distance And Direction To Other Public Land Survey Corners Used For Re-Establishing The Corner



I, Laurence E Johns III RLS 2804, Professional Land Surveyor, hereby certify that the corner location shown on this record was determined by me or under my direction and control, and that this U.S. Public Land Survey Monument Record is correct and complete to the best of my knowledge and belief.

Laurence E. Johns III
 Laurence E Johns III PLS 2804
 Eagle Ridge Surveying
 PO Box 213
 Wilton, Wisconsin
 10 April 2015



21503290020

I, Harley A. Sime, do hereby certify that on the 13 day of September 1976, I found (evidence) (~~no evidence~~) of the S 1/4 corner of Section 29, T 15 N, R 3W, Fourth Principal Meridian, and I re-established said corner according to the Wisconsin Statutes as shown and described hereon.

History of original corner establishment:

Description of corner evidence found:

Fred Holden in May of 1901 surveyed out Sec. 32-T15N-R3W and recorded two bearing trees, one of which is still standing. Witnesses say this single tree has been there for 80 years +. Reset the corner using the tree. Fits our measurements that we made in the Section. Allowed for declination difference.

County Surveyor _____
Title

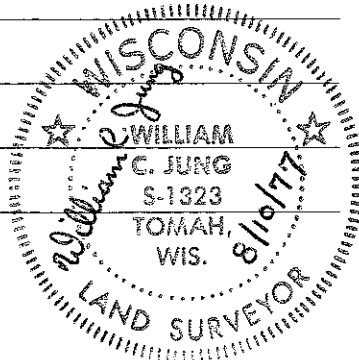
**Approved: HARLEY A. SIME
MONROE CO. SURVEYOR**

Description of corner and witness monuments, references and accessories used to perpetuate the original or re-established location of this corner:

Witnesses to corner location:

W. Jung - Crew Chief

A. Lueck



Extremely hard digging, buried only the top 12" of a Harrison Marker, down 1"

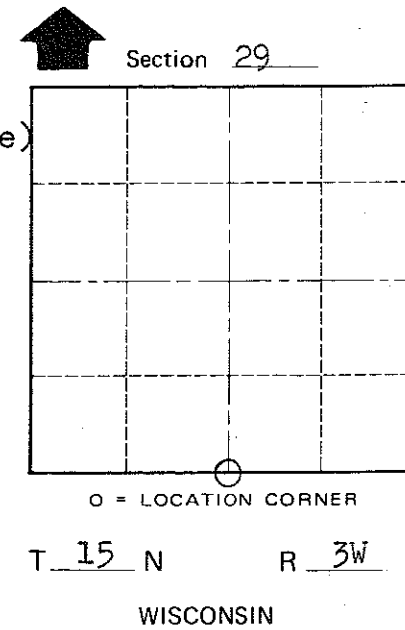
27" Oak, dying Holden's bearing tree (Reblazed and set P.K. in blaze)

Sign Post
N. Edge of Asphalt

S.T.H. "33"

To middle of Power Pole

Culvert



SURVEY CONTROL ORDER

Horizontal	_____
Vertical	_____

WISCONSIN COORDINATE SYSTEM

Corner	East (X)	North (Y)	Elevation (Z)	Zone
Control Sta. Name				

City, Village or Town Jefferson

County of Monroe

O.K.

COUNTY SURVEYOR FORM NO. 1