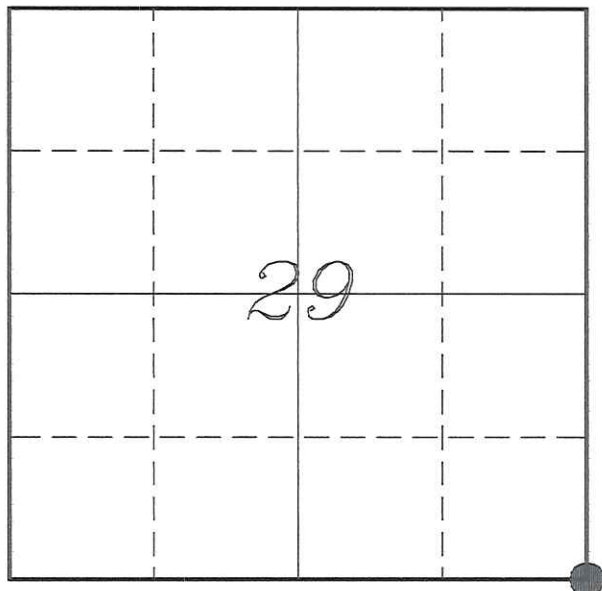


U. S. PUBLIC LAND SURVEY MONUMENT RECORD

SECTION 29, T15N, R3W, TOWN OF JEFFERSON
MONROE COUNTY, WISCONSIN



LOCATION OF LANDMARK

MONROE COUNTY COORDINATE SYSTEM	
Northing	0.00
Easting	0.00
Datum	NAD 1983 (2011)
Elevation	
Datum	
TYPE OF LANDMARK:	
Set 1 1/4" x 18" Iron Rod	
BEARINGS ARE REFERENCED TO:	
Monroe County Coordinates	

Witnesses: Laurence E Johns III
Larry Handschy

Date: 20 March 2015

Describe any record evidence, monument evidence, testimonial evidence or any other material evidence you considered and whether the monument was found or restored through acceptance of an obliterated evidence location.

The two trees to the Southwest as shown on Jung's tie sheet still exist. Those two trees are not shown on the sketch but were found to agree with the location of this re-established corner.

The coordinates shown on the highway plat match those recorded by the Monroe County Conservation Department.

I re-established this corner based on the recorded coordinates and the verified that location with the surveys in the area.

Describe or show any material discrepancy between the location of the restored corner and that of the corner previously restored or re-established.

Henry Maddin established this corner in January 1846.

Fred Holden was at this corner, in May 1901, during a survey in Section 32. He shows that he set an iron bar.

William Jung was at this corner, in December 1981. He shows that he set a PK Nail and prepared a tie sheet. His tie sheet says a Harrison to be set at a later date.

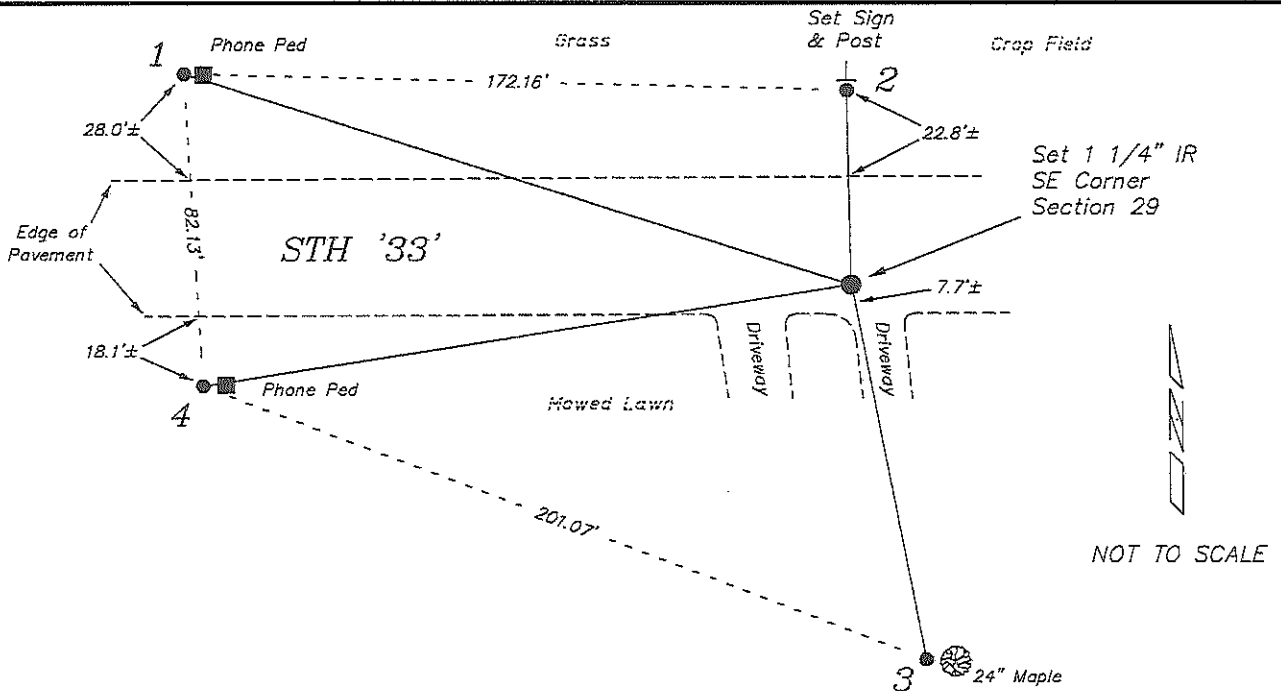
Rodney Maxwell was at this corner, in July 2005, during a survey in Section 28. He shows finding a PK Nail.

Jonathan Schmitz was at this corner, in June 2014, during a survey in Section 29.

During the summer of 2014 this corner was destroyed during a highway widening project for STH '33'

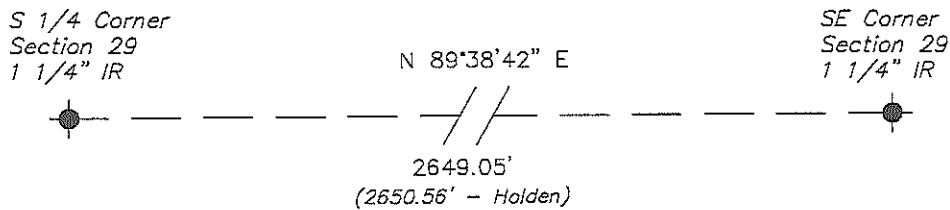
RECORD OF DURABLE WITNESS MONUMENTS

NO	DESCRIPTION	BEARING	DISTANCE
1.	Set 3/4" x 18" Iron Rod 1' East of a Phone Pedestal	N 72°11'08" W	181.84'
2.	Set 3/4" x 18" Iron Rod 1' South of a Right-of-Way Sign	N 01°08'11" W	51.28'
3.	Set 3/4" x 18" Iron Rod 1' West of a 36" Elm	S 10°54'51" E	100.60'
4.	Set 3/4" x 18" Iron Rod 1' East of a Phone Pedestal	S 81°06'28" W	170.58'



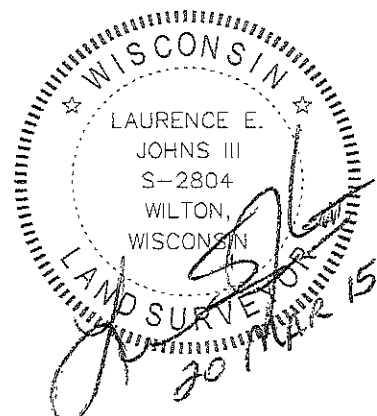
PLAN VIEW DRAWING OF REFERENCE TIES

Map Showing Distance And Direction To Other Public Land Survey Corners Used For Re-Establishing The Corner



I, Laurence E Johns III RLS 2804, Professional Land Surveyor, hereby certify that the corner location shown on this record was determined by me or under my direction and control, and that this U.S. Public Land Survey Monument Record is correct and complete to the best of my knowledge and belief.

Laurence E. Johns III
 Laurence E Johns III PLS 2804
 Eagle Ridge Surveying
 PO Box 213
 Wilton, Wisconsin
 20 March 2015



21503290000

I, William C. Jung, do hereby certify that on the 22nd day of December 19 81, I found ~~(evidence)~~ (no evidence) of the Northwest corner of Section 33, T 15 N, R 3 W Fourth Principal Meridian, and I re-established said corner according to the Wisconsin Statutes as shown and described hereon.

History of corner establishment since Original Government Survey
Holden set an iron bar at this corner in May of 1901.

Dated this 24th day of Dec. 19 81.

William C. Jung

Registered Land Surveyor 1323
Title

Description of corner evidence found: I could not find Holden's iron bar. It was probably destroyed during road construction. I set the corner on line with an old fence line to the North and with the occupied line to the South, and at a distance from the West 1/16 Southwest corner of Section 28, equal to the distance between the West 1/16 Southwest and West 1/4 corners of Section 28. The distance West to the North 1/4 of Section 32 is split exactly even at the North 1/16 Northeast of Section 32, by a fence going to the South. The distance East to the North 1/4 corner of Section 33 is longer than the original notes, but that seems to be a consistent pattern in this township.

William C. Jung

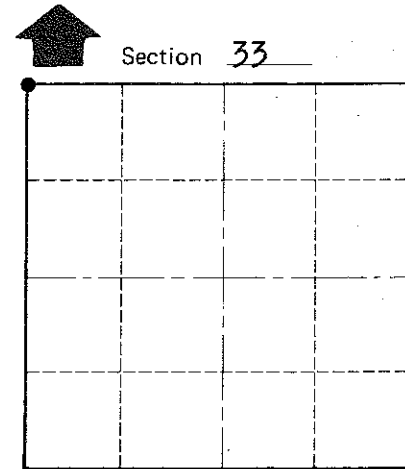
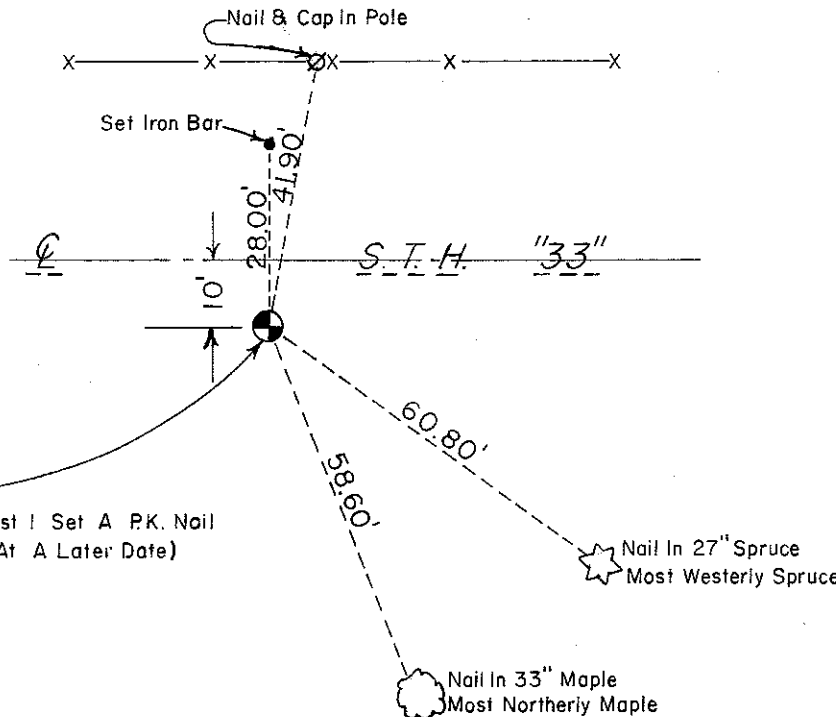
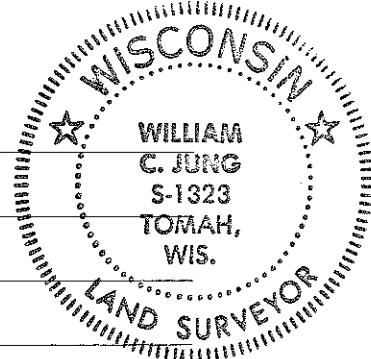
Description of corner and witness monuments, references and accessories used to perpetuate the original or re-established location of this corner:

Witnesses to corner location:

Jung

Dechant

Meyer



O = LOCATION CORNER

T 15 N R 3 W

WISCONSIN

Approved: **HARLEY A. SIME**
MONROE CO. SURVEYOR

SURVEY CONTROL ORDER

Horizontal	_____
Vertical	_____

WISCONSIN COORDINATE SYSTEM

Corner	East (X)	North (Y)	Elevation (Z)	Zone
Control Sta. Name				

~~City, Village or~~ Town Jefferson
County of Monroe
Wisconsin

COUNTY SURVEYOR FORM NO. 1