

21503250020

I, Mark R. Heidecke, do hereby certify that on the 6 day of February 19 79, I found ~~XXXXXX~~ (no evidence) of the South Quarter corner of Section 25, T 15 N, R 3 W Fourth Principal Meridian, and I re-established said corner according to the Wisconsin Statutes as shown and described hereon.

Dated this 23 day of May 19 79.

*Mark R. Heidecke*

Registered Land Surveyor

Title



History of corner establishment since Original Government Survey

Sec. 36-T.15N.-R.3W. was surveyed in 1899 by La Rue, County Surveyor, and an iron buggy stub was set at the North Quarter corner of Sec. 36.

Description of corner evidence found:

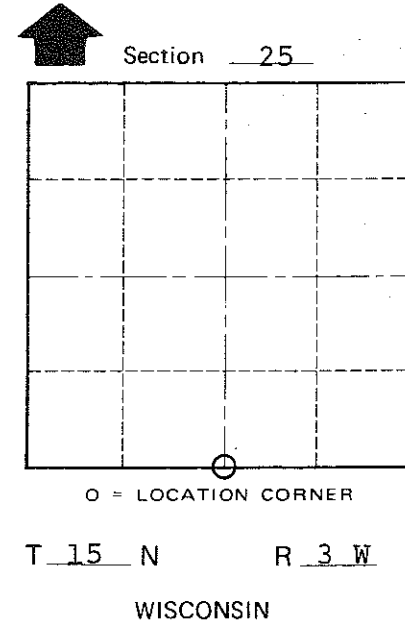
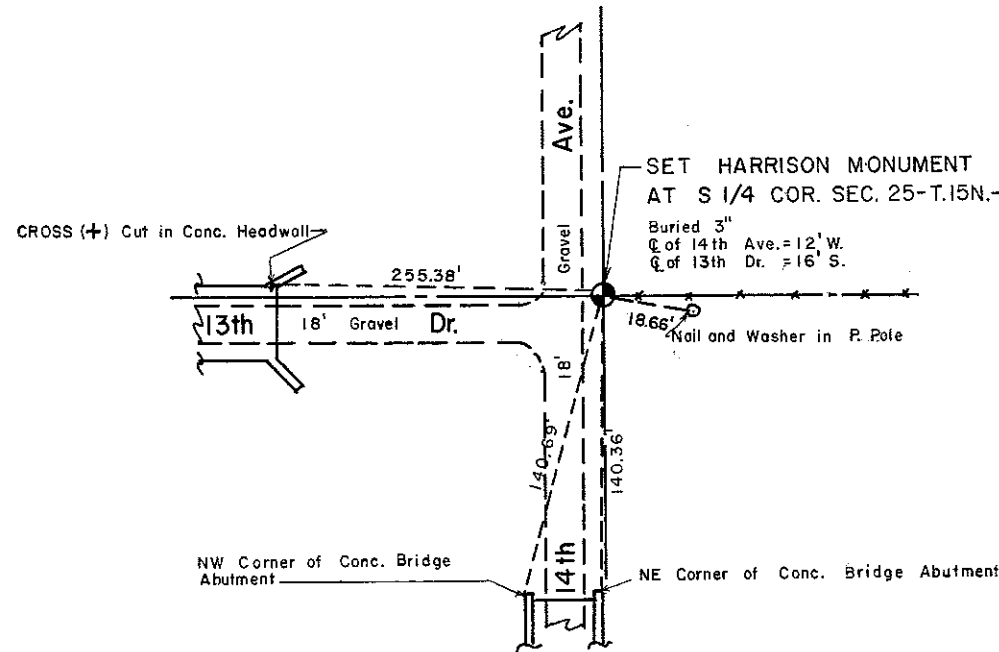
The corner set in 1899 was not found. This corner was then established with a Harrison monument half way and on a straight line between the Southeast and Southwest section corners of Sec. 25. This intersection fits a fence to the East at this location and the extension North of a fence to the South which begins approximately 500 feet South.

Description of corner and witness monuments, references and accessories used to perpetuate the original or re-established location of this corner:

Witnesses to corner location:

Mark R. Heidecke

Lawrence A. Feddersen



COUNTY SURVEYOR FORM NO. 1

SURVEY CONTROL ORDER

Horizontal \_\_\_\_\_  
Vertical \_\_\_\_\_

WISCONSIN COORDINATE SYSTEM

Corner	East (X)	North (Y)	Elevation (Z)	Zone
Control Sta. Name				

~~XXXXXX~~ City, Village or Town of Jefferson

County of Monroe