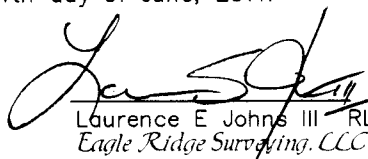


CERTIFICATE

I, Laurence E Johns III, do hereby certify that on the 18th day of May, 2011, I found evidence of the S 1/4 Corner of Section 23, T15N, R3W, Fourth Principle Meridian, and I re-established said corner according to the Wisconsin Statutes as shown and described hereon.

Dated this 4th day of June, 2011.



Laurence E Johns III RLS 2804
Eagle Ridge Surveying, LLC
PO Box 213
Wilton, WI 54670

CERTIFIED LAND CORNER

No. 84

21503230020

History of corner establishment since Original Government Survey

Henry Maddin established this corner in January 1847.

Description of corner evidence found:

Occupation is somewhat erratic in the area, possibly due to the steep hill.

All the fences come together at a single location.

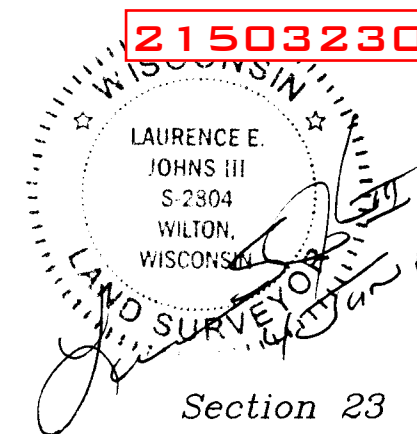
Found a large 28" Burr Oak to the Southeast. Maddin calls for 12" Burr Oak at S45°E, 16 links.

Since this tree is in the right location and approximately the right size.

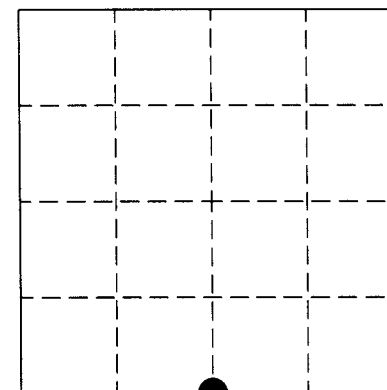
I accepted it as an original bearing tree and set the corner at the distance and direction from this Burr Oak.

This location matches the fence from the North and the fence in the valley to South very well.

Occupation matches very well at the '40' Corners North and South.



Section 23



● = LOCATION CORNER

T15N R3W

WISCONSIN

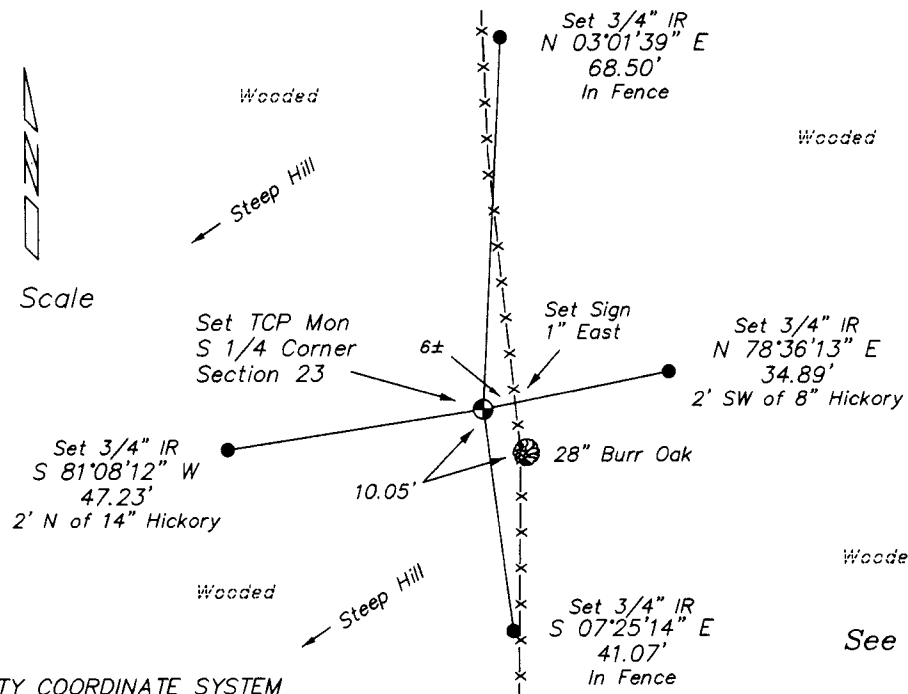
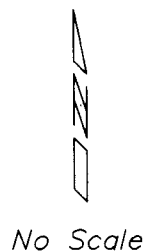
COUNTY SURVEYOR FORM NO. 7

Description of corner and witness monuments, references and accessories used to perpetuate the original or re-established location of this corner:

Witness to corner location:

Laurence E Johns III

Larry Handschy



SURVEY CONTROL ORDER

Horizontal
Vertical

MONROE COUNTY COORDINATE SYSTEM
NAD 1983 (2007)

	North (Y)	East (X)	Elevation (Z)	Zone
S 1/4 Corner Corner	310690.293	655346.575		
Control Sta. Name				

See Reverse for Section Information

City, Village or Town Jefferson

County of Monroe

SW Corner
Section 23
TCP Mon



S 89°27'38" W
2671.93'
(2648.25' - Gov't)

S 1/4 Corner
Section 23
TCP Mon



N 87°59'08" E
2613.17'
(2648.25' - Gov't)

SE Corner
Section 23
Harrison Mon

