

21503202000

I, Harley A. Sime, do hereby certify that on the twenty-ninth day of December 1981, I found (evidence) ~~no evidence~~ of the West 1/4 corner of Section 21, T 15 N, R 3 W Fourth Principal Meridian, and I re-established said corner according to the Wisconsin Statutes as shown and described hereon.

History of corner establishment since Original Government Survey  
No known recorded history since the original government survey.

Description of corner evidence found:

Accepted existing four-way fence corner as the best available evidence.

Dated this 30th day of Dec. 1981.

H. A. Sime

County Surveyor - Monroe County, Wisconsin.

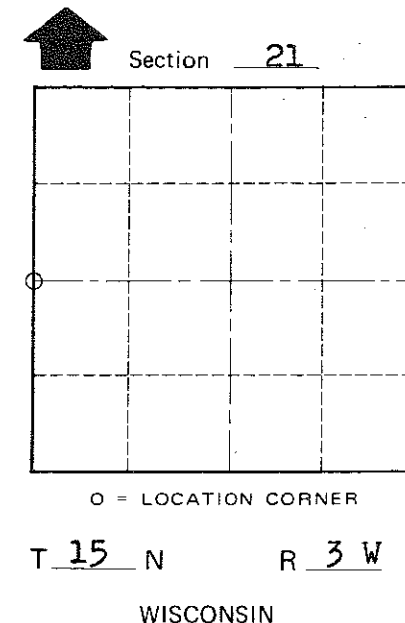
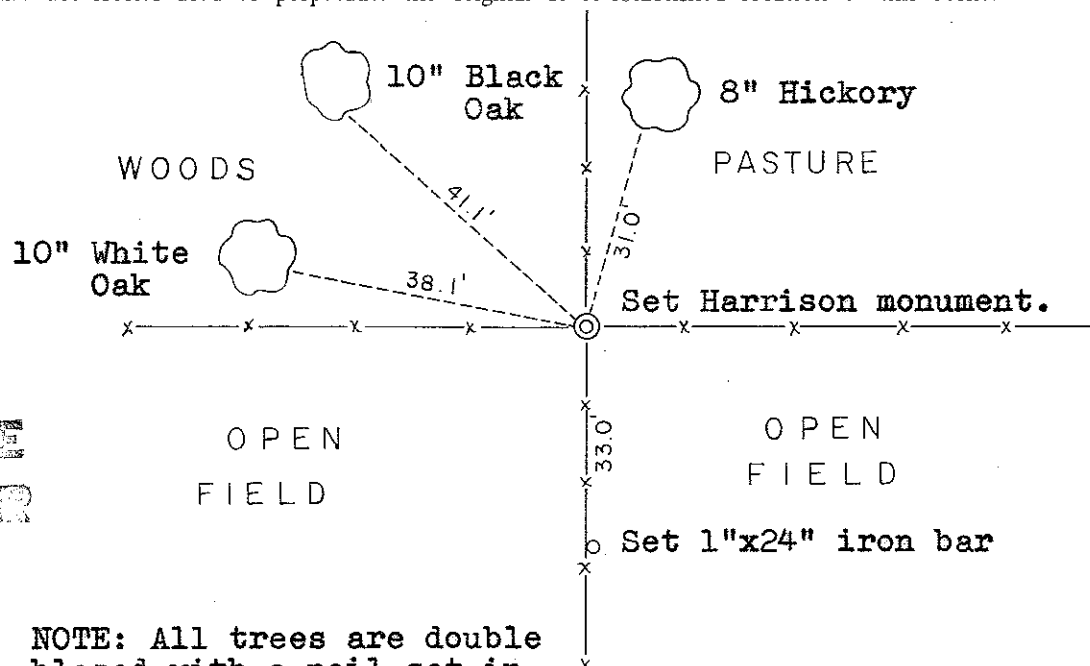
Title

COUNTY SURVEYOR FORM NO. 1

Description of corner and witness monuments, references and accessories used to perpetuate the original or re-established location of this corner:

Witnesses to corner location:

- Bryan H. Meyer - Crew chief
- Gary L. Dechant
- Carlton R. Pietz



**Approved: HARLEY A. SIME**  
**MONROE CO. SURVEYOR**

NOTE: All trees are double blazed with a nail set in the lower blaze. Distances are to blazes.

WISCONSIN COORDINATE SYSTEM

SURVEY CONTROL ORDER

Horizontal	_____
Vertical	_____

Corner	East (X)	North (Y)	Elevation (Z)	Zone
Control Sta. Name				

~~City, Village or~~ Town of Jefferson  
County of Monroe