

CERTIFICATE

CERTIFIED LAND CORNER

No. 90

21503200020

I, Lawrence A. Feddersen, do hereby certify that on the 7th day of October 1982, I found (evidence) (~~no evidence~~) of the N¹/₄ corner of Section 29, T 15 N, R 3 W Fourth Principal Meridian, and I re-established said corner according to the Wisconsin Statutes as shown and described hereon.

Dated this 14th day of Oct. 1982.

Lawrence A. Feddersen

Registered Land Surveyor #1226
Title

History of corner establishment since Original Government Survey

No known recorded history since the original government survey.

Description of corner evidence found:

Accepted the fence corner as the best available evidence. It also fits conditions to the East and South reasonably well.

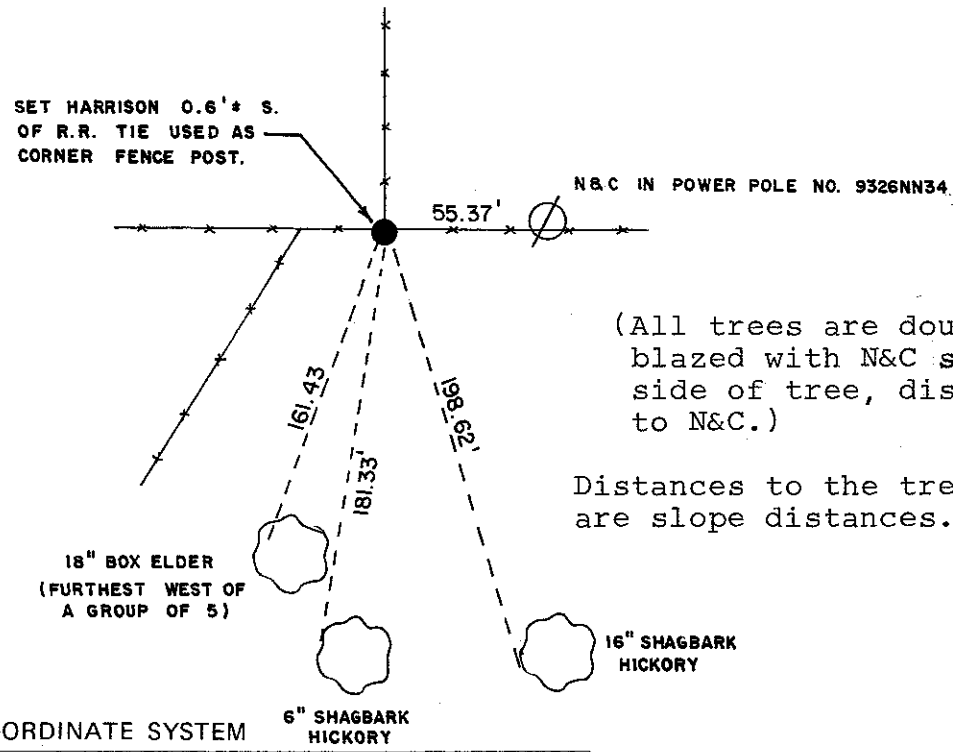
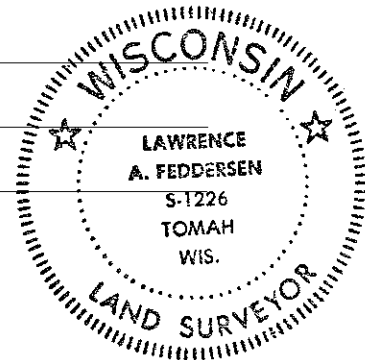
Approved: **HARLEY A. SIME**
MONROE CO. SURVEYOR

Description of corner and witness monuments, references and accessories used to perpetuate the original or re-established location of this corner:

Witnesses to corner location:

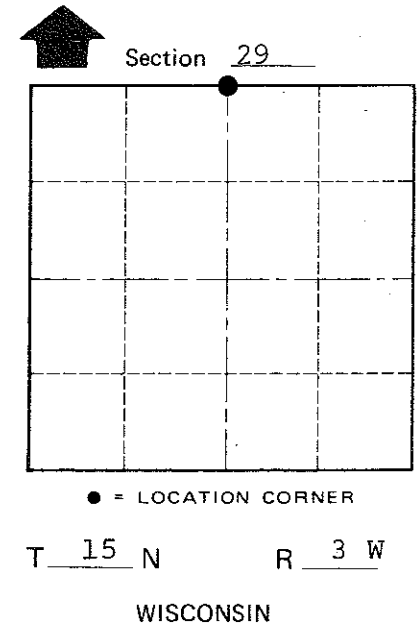
Lawrence A. Feddersen

Gary L. Dechant



(All trees are double blazed with N&C set in side of tree, distance to N&C.)

Distances to the trees are slope distances.



COUNTY SURVEYOR FORM NO. 1

SURVEY CONTROL ORDER

Horizontal	_____
Vertical	_____

WISCONSIN COORDINATE SYSTEM

Corner	East (X)	North (Y)	Elevation (Z)	Zone
Control Sta. Name				

~~City, Village or~~ Town Jefferson
County of Monroe