

2150320000

I, William C. Jung, do hereby certify that on the 13th day of September 1982, I found ~~evidence~~ (no evidence) of the SW corner of Section 21, T 15 N, R 3 W Fourth Principal Meridian, and I re-established said corner according to the Wisconsin Statutes as shown and described hereon.

Dated this 25th day of Feb. 1983.

William C. Jung

Deputy County Surveyor

Title

History of corner establishment since Original Government Survey
No recorded history since the original government survey.

Description of corner evidence found:
I set the corner at a computed location. I set it on line with an existing fence to the North, and at a distance from the W1/4-Section 21 equal to the distance from the W1/4 of Section 28. I measured (3) miles from the NW of Section 21 to the SW of Section 33. My final corner location fits very well the conditions found along these (3) miles. In measuring the 1/2 mile East to the South 1/4 of Section 21, I find that the existing fence to the North at the S1/16SW of Section 21 splits the measured 1/2 mile. It is interesting to note that I seem to be measuring consistently longer than the original notes in much of my section work.

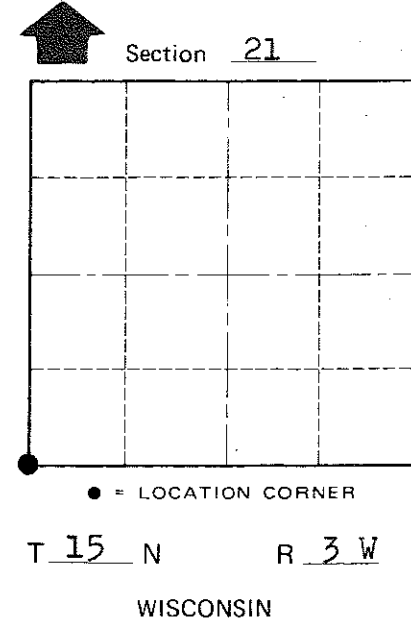
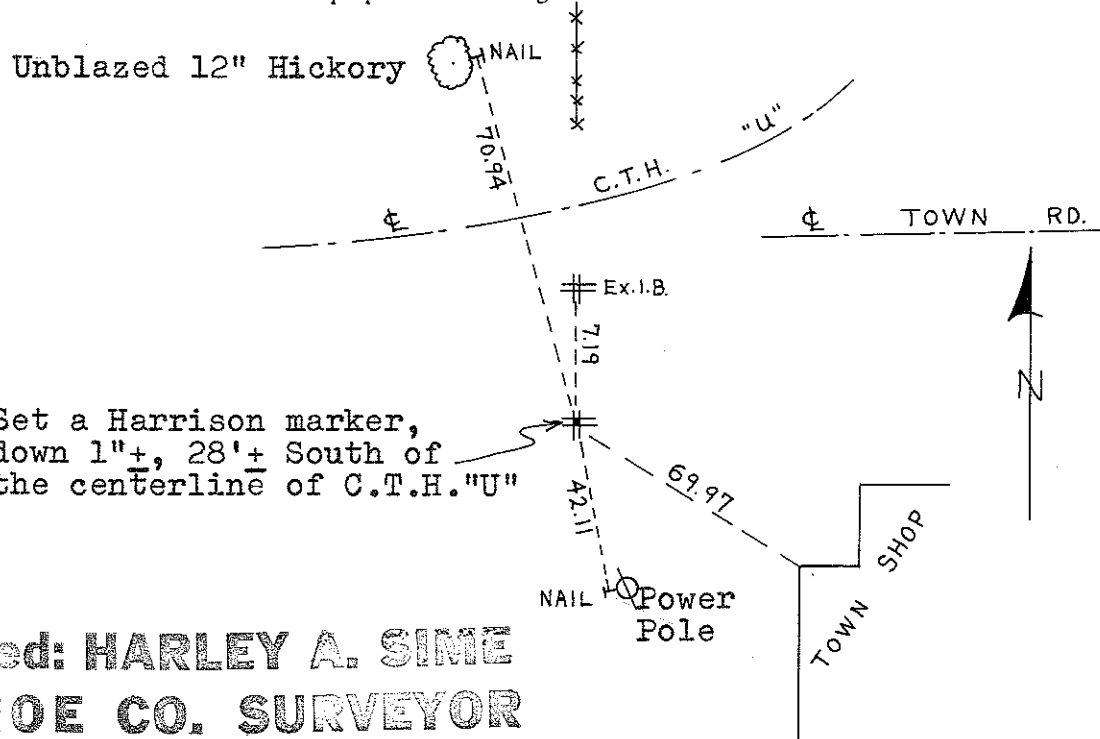
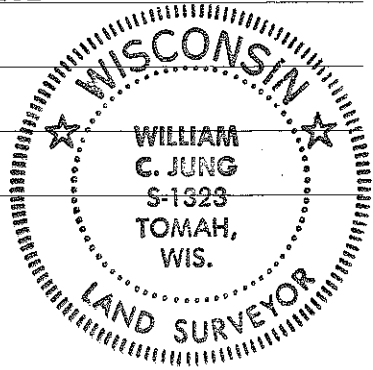
Note: The iron bar 7.19 feet to the North of the section corner was my survey point.

Description of corner and witness monuments, references and accessories used to perpetuate the original or re-established location of this corner:

Witnesses to corner location:

William Jung

Melvin Pliner



COUNTY SURVEYOR FORM NO. 1

SURVEY CONTROL ORDER

Horizontal	_____
Vertical	_____

Approved: **HARLEY A. SIME**
MONROE CO. SURVEYOR
WISCONSIN COORDINATE SYSTEM

Corner	East (X)	North (Y)	Elevation (Z)	Zone
Control Sta. Name				

City, Village or Town Jefferson
County of Monroe