

CERTIFICATE

CERTIFIED LAND CORNER

No. 91

21503190000

I, Rodney H. Maxwell, do hereby certify that on the 17th day of September, 1997, I found ~~(evidence)~~ (no evidence) of the N.E. corner of Section 30, T.15N., R.3W., Fourth Principle Meridian, and I re-established said corner according to the Wisconsin Statutes as shown and described hereon.

History of corner establishment since Original Government Survey

None since original government survey.

Dated this 17th day of September, 1997.

Description of corner evidence found:

Rodney H. Maxwell
 Rodney H. Maxwell *9/5/2000*
 MAXWELL SURVEYING
 7457 Highway 16, Suite C
 Sparta, Wi 54656

Set corner using double proration between the E.1/4 corners of Sections 19 & 30 and the N.1/4 corners of sections 29 & 30. Corner fell in line of trees, 1.4 feet North of a old down fence and 3 feet North of newer fence line.

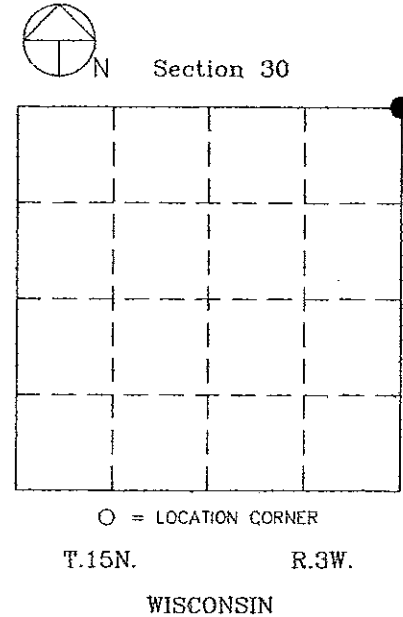
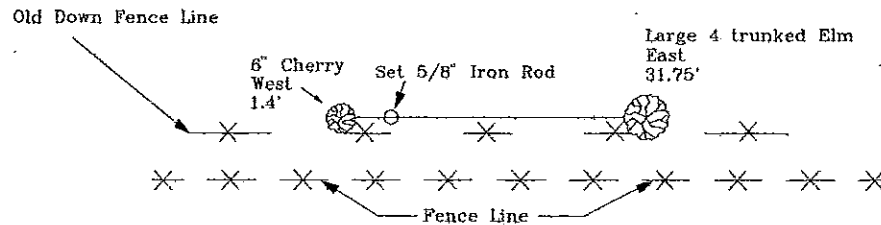
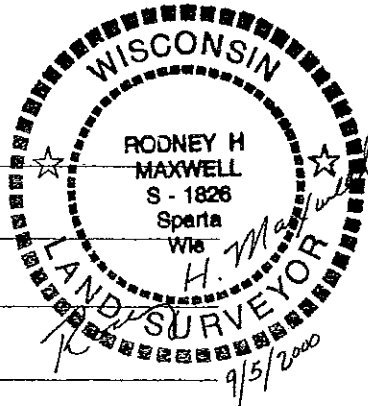
Description of corner and witness monuments, references and accessories used to perpetuate the original or re-established location of this corner:

Witness to corner location:

 Rodney H. Maxwell

 Dwayne M. Hefner

 Laurence E. Johns III



COUNTY SURVEYOR FORM NO. 1

SURVEY CONTROL ORDER

Horizontal
Vertical

WISCONSIN COORDINATE SYSTEM

Corner	East (X)	North (Y)	Elevation (Z)	Zone
Control Sta. Name				

City, Village or Town Town of Jefferson
 County of Monroe