

21503170000

I, Harley A. Sime do hereby certify that on the twenty-ninth day of December 1981, I found (evidence) ~~no evidence~~ of the Northwest corner of Section 21, T 15 N, R 3 W Fourth Principal Meridian, and I re-established said corner according to the Wisconsin Statutes as shown and described hereon.

Dated this 30th day of Dec. 1981.

H. A. Sime

Monroe County Surveyor

Title

History of corner establishment since Original Government Survey

Schroeder was here in September of 1890.

Description of corner evidence found:

Found Schroeder's White Oak bearing tree. Set corner at appropriate distance from center of tree. This point fits the existing fence corner very well.

COUNTY SURVEYOR FORM NO. 1

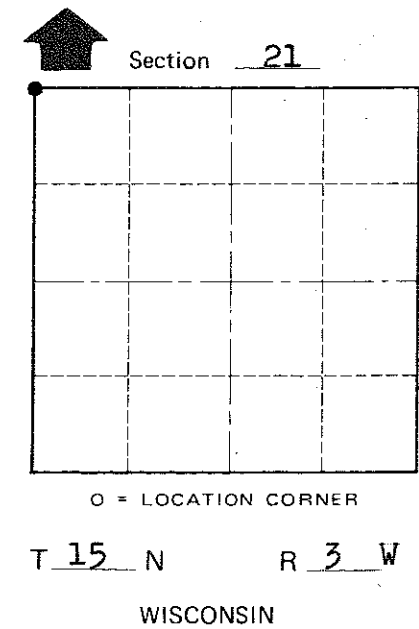
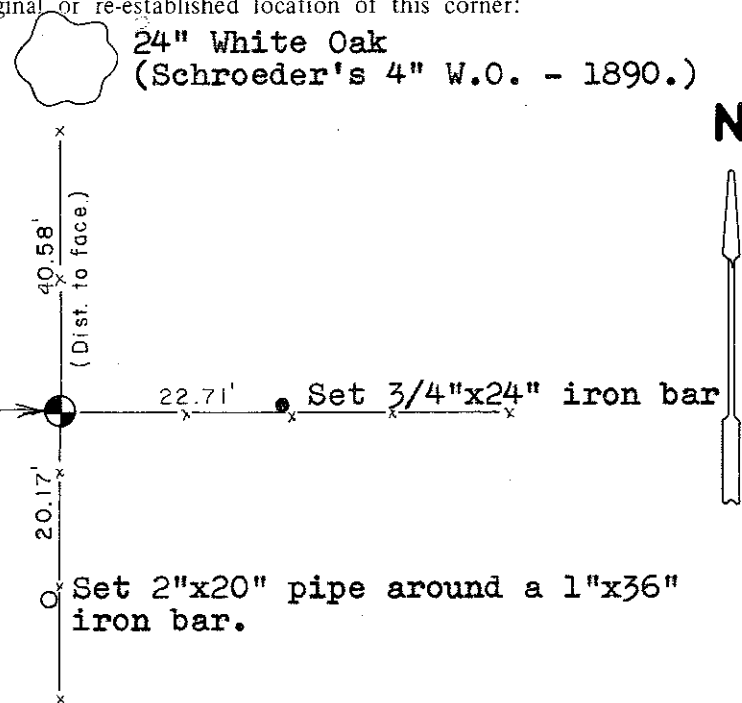
Description of corner and witness monuments, references and accessories used to perpetuate the original or re-established location of this corner:

Witnesses to corner location:

Bryan H. Meyer - Crew chief

Gary L. Dechant

Carlton R. Pietz



Set Harrison Monument

Approved: **HARLEY A. SIME**
MONROE CO. SURVEYOR

SURVEY CONTROL ORDER

Horizontal	_____
Vertical	_____

WISCONSIN COORDINATE SYSTEM

Corner	East (X)	North (Y)	Elevation (Z)	Zone
Control Sta. Name				

~~City of~~ Town of Jefferson
County of Monroe