

21503130020

I, Gary L. Dechant, do hereby certify that on the 24th day of Nov. 19 98, I found (evidence) ~~(no evidence)~~ of the S/4 corner of Section 13, T 15 N, R 3 W Fourth Principal Meridian, and I re-established said corner according to the Wisconsin Statutes as shown and described hereon.

Dated this 1st day of Dec. 19 98.

Gary L. Dechant

R.L.S. 1744

Title

History of corner establishment since Original Government Survey

No known recorded history since the original government survey.

Description of corner evidence found:

Set corner in line with north-south fence and on line with section corners.

The fence half mile west is built crooked and it is a good possibility the fence was shifted south along the east half mile, south line SE/4, because of Brush Creek.

Half mile west fits original notes very well.

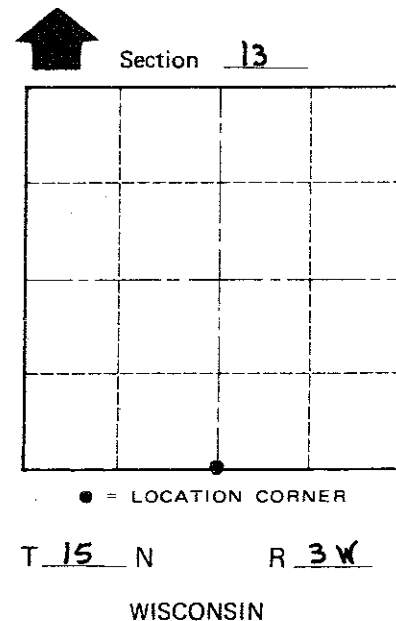
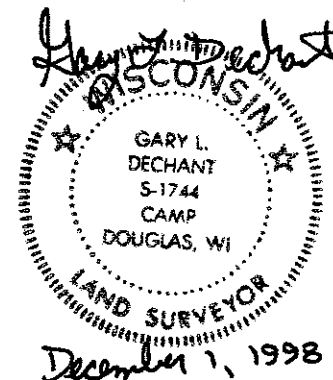
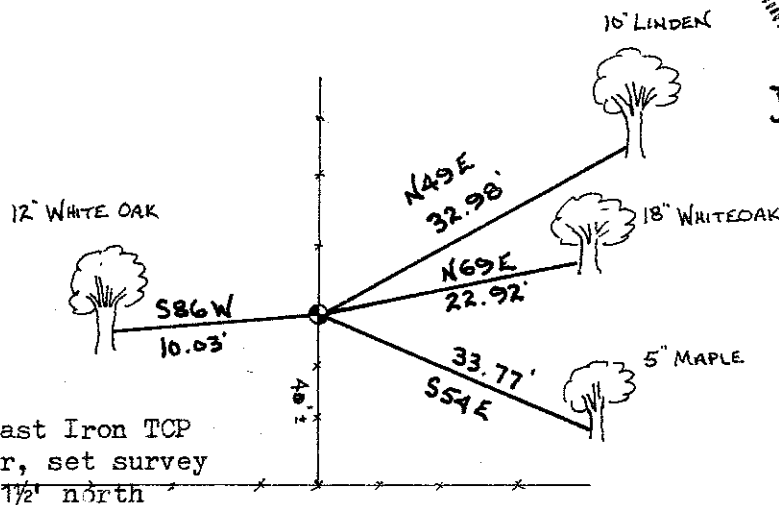
COUNTY SURVEYOR FORM NO. 1

Description of corner and witness monuments, references and accessories used to perpetuate the original or re-established location of this corner:

Witnesses to corner location:

David E. Madison

Gary L. Dechant



Trees double blazed with 40d nail set.

SURVEY CONTROL ORDER

Horizontal	_____
Vertical	_____

WISCONSIN COORDINATE SYSTEM

Corner	East (X)	North (Y)	Elevation (Z)	Zone
Control Sta. Name				

~~City, Village~~ Town JEFFERSON
County of MONROE