

21503130000

I, William C. Jung, do hereby certify that on the 13th day of September 1982, I found (evidence) ~~(no evidence)~~ of the NE corner of Section 24, T. 15 N, R. 3 W Fourth Principal Meridian, and I re-established said corner according to the Wisconsin Statutes as shown and described hereon.

Dated this 24th day of Feb. 1983.

William C. Jung  
Deputy County Surveyor

Title

History of corner establishment since Original Government Survey

In February of 1979 Mark Heidecke found a 1" axle at this corner and used it as the section corner.

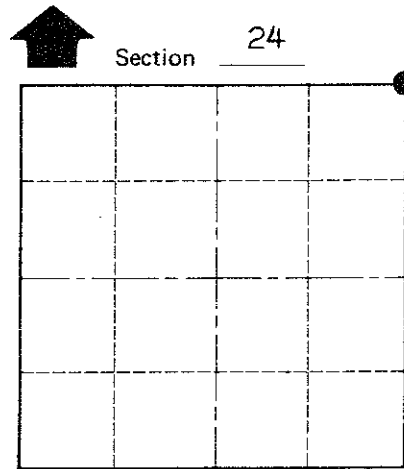
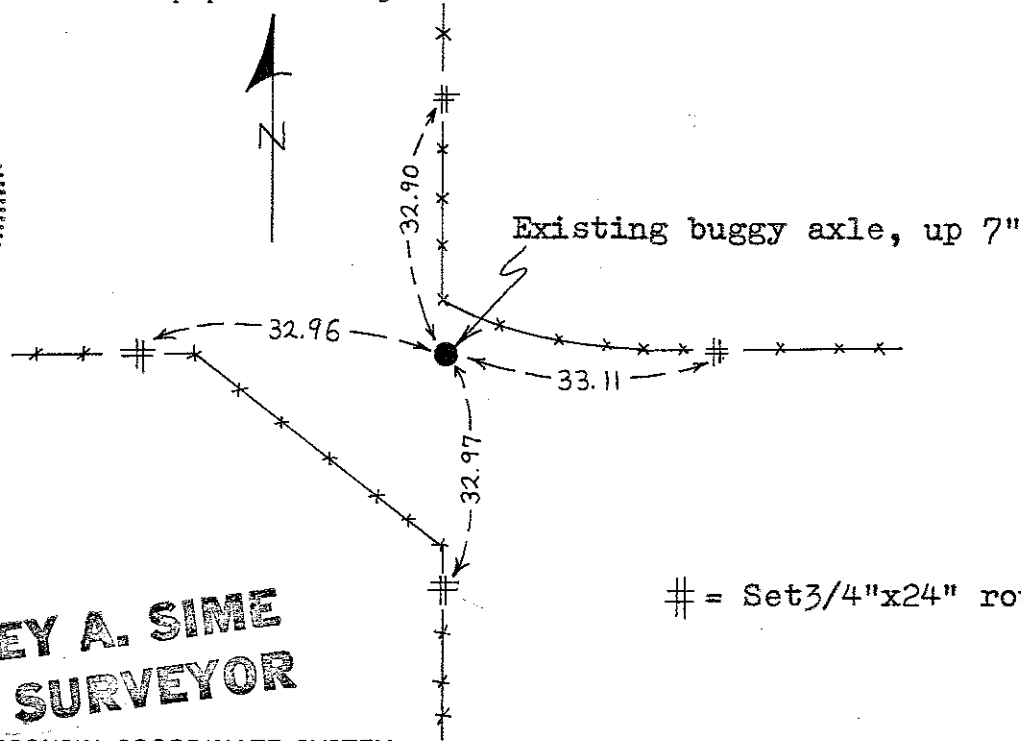
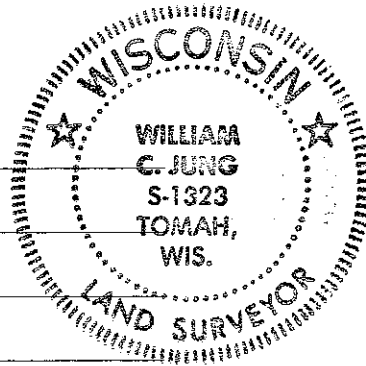
Description of corner evidence found:

I found an unrecorded buggy axle at the old occupied corner. There are line fences going in all (4) cardinal directions. Heidecke accepted this axle as the corner. I also accepted this axle and location as the best available evidence of the original government corner. The axle is solidly set in rocky ground (flint rock and clay). Therefore I did not replace it with a Harrison.

Description of corner and witness monuments, references and accessories used to perpetuate the original or re-established location of this corner:

Witnesses to corner location:

William Jung  
Melvin Pliner, Jr.



● = LOCATION CORNER

T 15 N R 3 W

WISCONSIN

# = Set 3/4"x24" round iron bar

COUNTY SURVEYOR FORM NO. 1

SURVEY CONTROL ORDER

Horizontal				
Vertical				
Corner	East (X)	North (Y)	Elevation (Z)	Zone
Control Sta. Name				

Approved: **HARLEY A. SIME**  
**MONROE CO. SURVEYOR**

WISCONSIN COORDINATE SYSTEM

City, Village or Town Jefferson  
County of Monroe