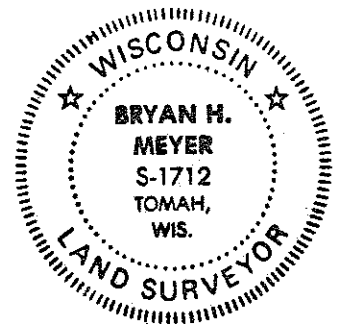


CERTIFICATE

CERTIFIED LAND CORNER

No. 44

21503110020



I, Bryan H. Meyer, do hereby certify that on the 7th day of April 19 89, I found evidence of the North 1/4 corner of Section 14, T 15 N, R 3 W Fourth Principal Meridian, and I re-established said corner according to the Wisconsin Statutes as shown and described hereon.

Dated this 6th day of July 19 89.

Bryan H. Meyer
Registered Land Surveyor
Title

History of corner establishment since Original Government Survey

Webster Kenyon was here in November of 1891. Fred Holden was here sometime in 1908.

Description of corner evidence found:

I re-established this corner on line between the Northeast and Northwest corners and on line with an existing fenceline to the North.

COUNTY SURVEYOR FORM NO. 1

Description of corner and witness monuments, references and accessories used to perpetuate the original or re-established location of this corner:

Crew: Meyer, Forsythe
Date: April 7, 1989
Weather: P. Cloudy, 50±
Witnesses to corner location:

Bryan H. Meyer

Brian Forsythe

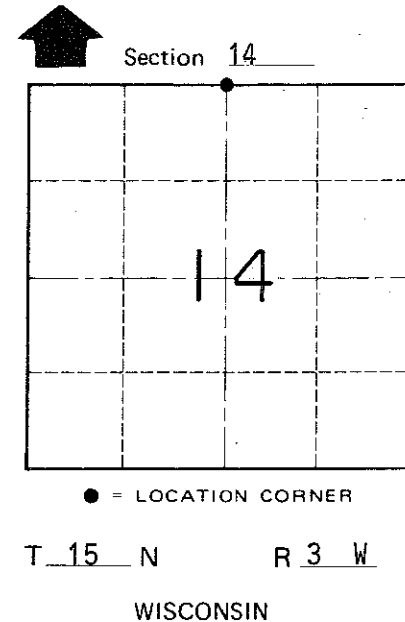
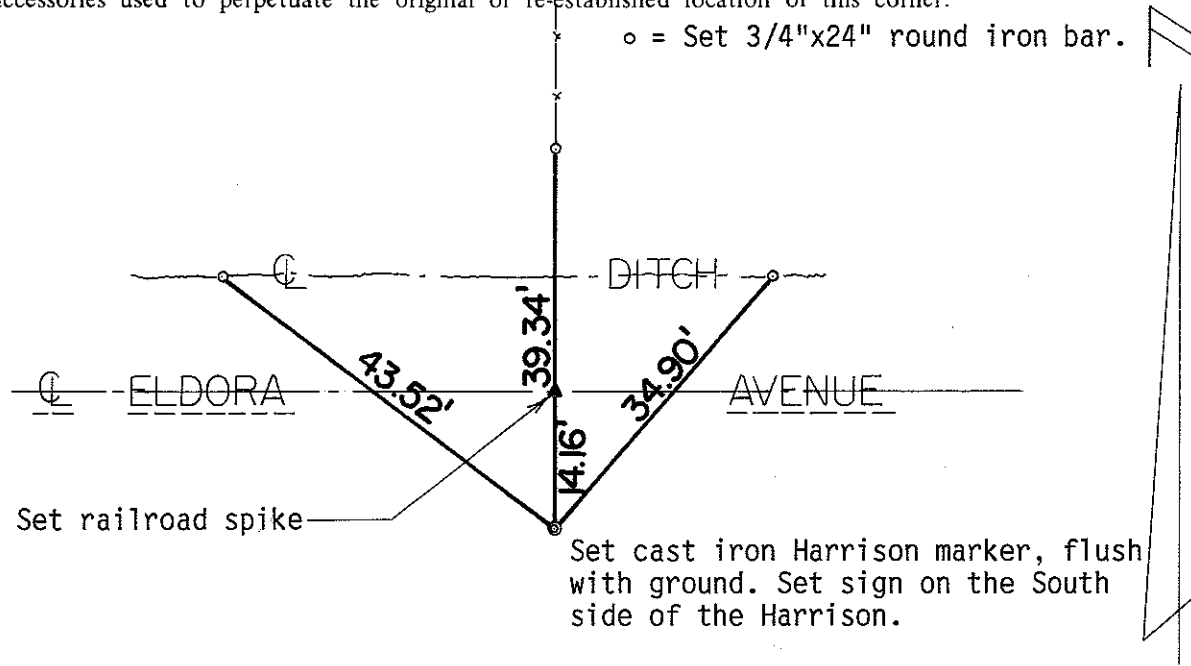
H. A. SIME & ASSOC.

Surveying & Land Planning

1819 Stoughton Ave. - P.O. Box 703

TOMAH, WI 54660

608-372-5392



SURVEY CONTROL ORDER

Table with 2 rows: Horizontal, Vertical

WISCONSIN COORDINATE SYSTEM

Table with 5 columns: Corner, East (X), North (Y), Elevation (Z), Zone

Town of Jefferson

County of Monroe