

21503110000



I, Bryan H. Meyer, do hereby certify that on the 30th day of March 1989, I found (evidence) of the Northeast corner of Section 14, T. 15 N., R. 3 W. Fourth Principal Meridian, and I re-established said corner according to the Wisconsin Statutes as shown and described hereon.

History of corner establishment since Original Government Survey

Webster Kenyon was here in November of 1891. Fred Holden was here sometime in 1908.

Description of corner evidence found:

I accepted a three-way fence corner as the best available evidence.

Dated this 11th day of July 1989. Bryan H. Meyer Registered Land Surveyor

COUNTY SURVEYOR FORM NO. 1

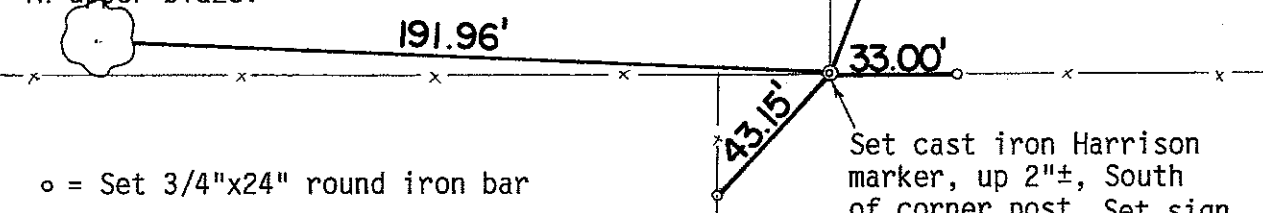
Description of corner and witness monuments, references and accessories used to perpetuate the original or re-established location of this corner:

Crew: Meyer, Forsythe Date: March 30, 1989 - 1:45 P.M. Weather: Overcast, Windy, 40± Witnesses to corner location:

Bryan H. Meyer Brian Forsythe

H. A. SIME & ASSOC. Surveying & Land Planning 1819 Stoughton Ave. - P.O. Box 705 TOMAH, WI 54660 608-372-5392

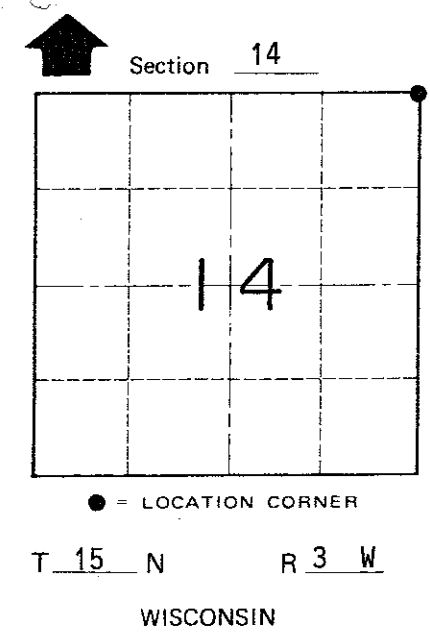
10" Hickory scribed "M" in upper blaze.



30" Black Oak scribed "M" in upper blaze.

o = Set 3/4"x24" round iron bar

The two bearing trees shown hereon are double blazed; the distance shown to each are to nails set in hacks in the side of each tree.



SURVEY CONTROL ORDER

Horizontal Vertical

WISCONSIN COORDINATE SYSTEM

Table with columns: Corner, Control Sta. Name, East (X), North (Y), Elevation (Z), Zone

Town of Jefferson County of Monroe