

CERTIFICATE

CERTIFIED LAND CORNER

No. 46

21503100020

I, Lawrence A Feddersen, do hereby certify that on the 28th day of April 19 78, I found (evidence) (~~no evidence~~) of the S $\frac{1}{4}$ corner of Section 10, T15 N, R 3 W, Fourth Principal Meridian, and I re-established said corner according to the Wisconsin Statutes as shown and described hereon.

Dated this 22 day of May 19 78.

Lawrence A. Feddersen

REGISTERED LAND SURVEYOR, S-1226
Title

History of original corner establishment:

Schroöder set a post at this corner in Nov., 1891.

Description of corner evidence found:

This corner was established mid-way between the SE and SW corners of Sec. 10, and on a line between the SW corner of Sec. 10 and a point at the intersection of the East-West fence and the centerline of the town road at this corner location. Our measurement to the S $\frac{1}{4}$ corner of Sec. 15 from this corner was 3.5'+ longer than Schroeder's record distance of 5288.58'. If this corner was placed on line between the SW and SE corners it would have shortened the distance to the S $\frac{1}{4}$ corner of Sec. 15 by 18'+.

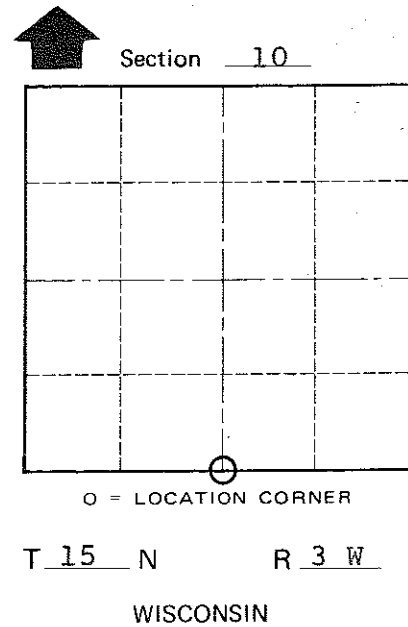
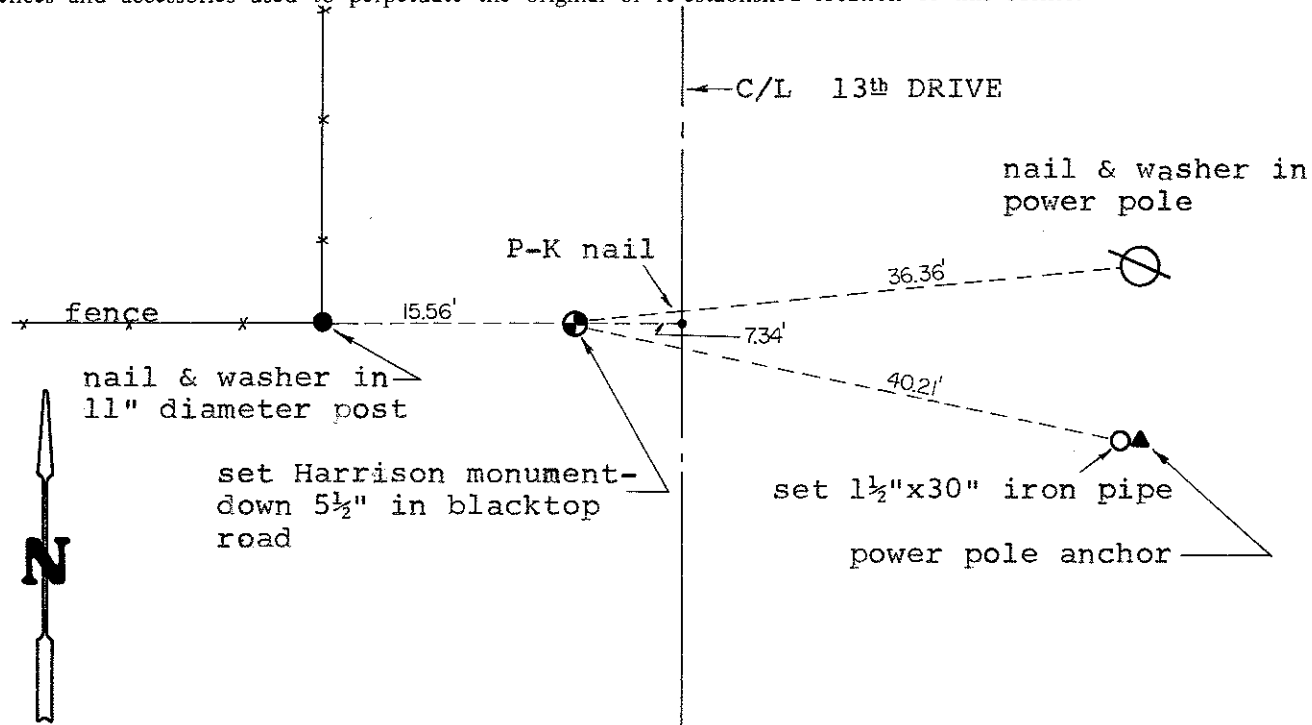
COUNTY SURVEYOR FORM NO. 1

Description of corner and witness monuments, references and accessories used to perpetuate the original or re-established location of this corner:

Witnesses to corner location:

Lawrence A. Feddersen

Douglas J. Malliet



SURVEY CONTROL ORDER

Horizontal	_____
Vertical	_____

WISCONSIN COORDINATE SYSTEM

Corner	East (X)	North (Y)	Elevation (Z)	Zone
Control Sta. Name				

~~City, Village or Town~~ of JEFFERSON

County of MONROE