

CERTIFICATE

CERTIFIED LAND CORNER

No. 37

**21503092000**

I, Lawrence A. Feddersen, do hereby certify that on the 28<sup>th</sup> day of April 19 78, I found ~~no evidence~~ (no evidence) of the W<sub>1/4</sub> corner of Section 10, T 15 N, R 3 W, Fourth Principal Meridian, and I re-established said corner according to the Wisconsin Statutes as shown and described hereon.

Dated this 22 day of May 19 78.

Lawrence A. Feddersen

REGISTERED LAND SURVEYOR, S-1226

History of original corner establishment:

No subsequent history of monument perpetuation since the original U.S. Government Survey.

Description of corner evidence found:

This corner was established mid-way and on line between the NW and SW corners of Sec. 10.

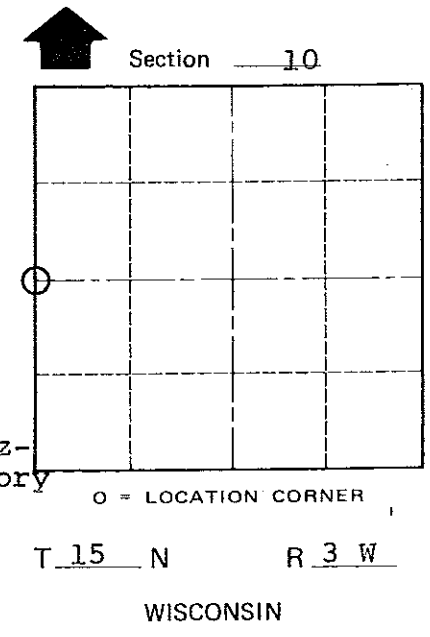
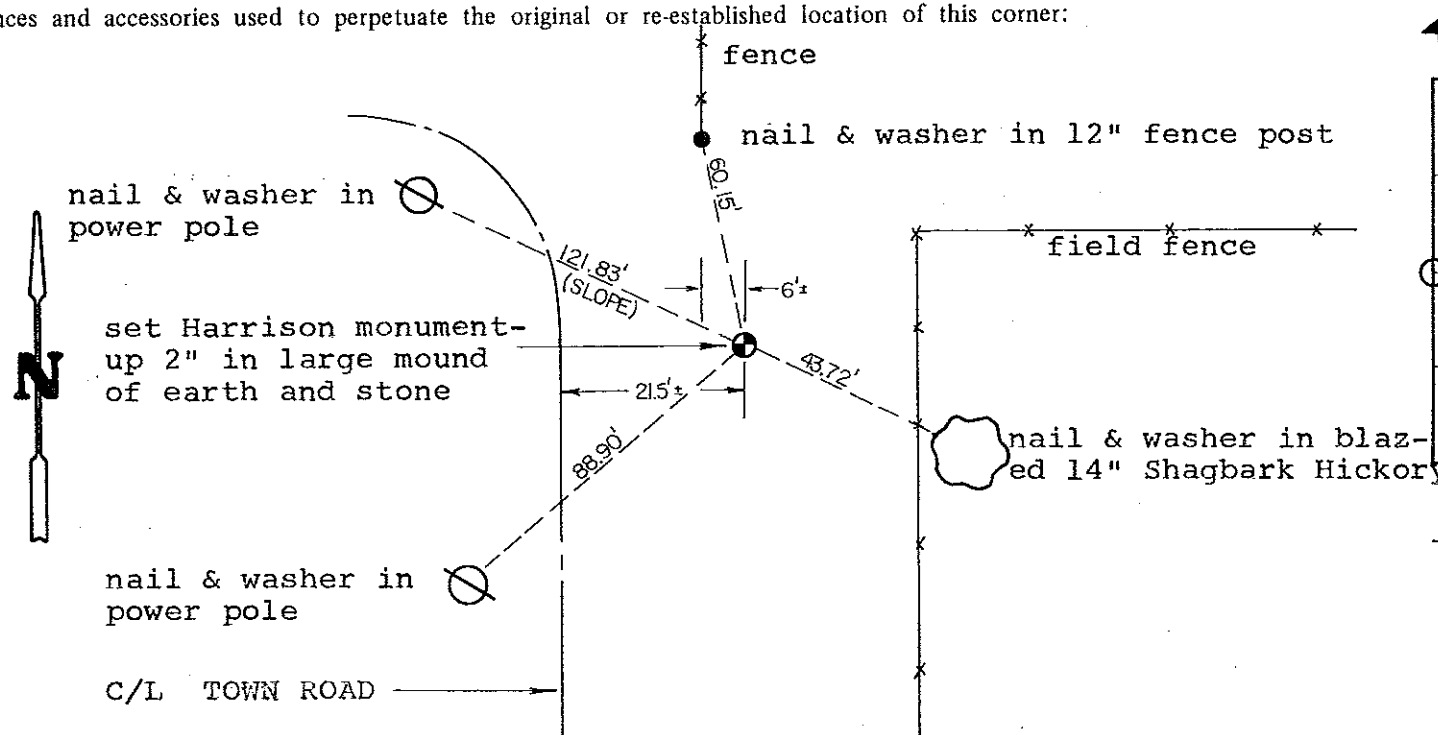
COUNTY SURVEYOR FORM NO. 1

Description of corner and witness monuments, references and accessories used to perpetuate the original or re-established location of this corner:

Witnesses to corner location:

Lawrence A. Feddersen

Douglas J. Malliet



SURVEY CONTROL ORDER

Horizontal	_____
Vertical	_____

WISCONSIN COORDINATE SYSTEM

Corner	East (X)	North (Y)	Elevation (Z)	Zone
Control Sta. Name				

City, Village or Town of JEFFERSON

County of MONROE