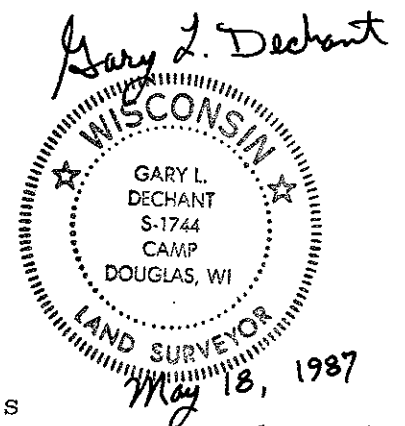


CERTIFICATE

CERTIFIED LAND CORNER

No. 50

21503080020



I, Gary L. Dechant, do hereby certify that on the 14th day of May 19 87, I found (evidence) of the N 1/4 corner of Section 17, T15 N, R 3 W Fourth Principal Meridian, and I re-established said corner according to the Wisconsin Statutes as shown and described hereon.

Dated this 18th day of May 19 87.

Gary L. Dechant
Reg. Land Surveyor, S-1744

History of corner establishment since Original Government Survey

Fred Holden in his survey notes of 1910, shows he set a stone at this corner.

Description of corner evidence found:

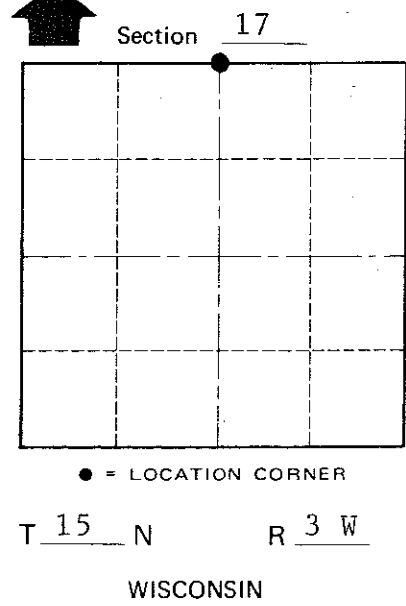
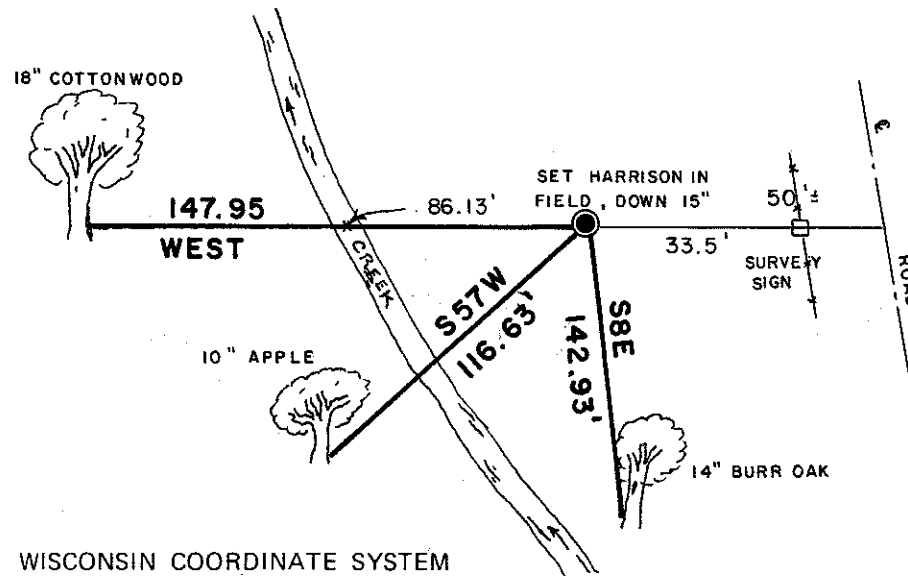
Reset the corner based on the Original Government Survey distances from physical features listed in there notes. The distances given "enter bottom" to "branch 5 runs NW" and to "leave bottom" in the Original notes and our distances measured between these same features compare reasonably well. Although this gives a long half mile to the east, we feel this location to be correct based on the physical features in the Original notes. The half mile to the west is short but can be understood because of the high rock ledge the Original Surveyors must of encountered. Did not set half way between section corners as that would not agree at all with the physical features. Corner is also on a straight line between section corners.

Description of corner and witness monuments, references and accessories

Witnesses to corner location:

David E. Madison

Gary L. Dechant



(Trees double blazed with N&C's set)

COUNTY SURVEYOR FORM NO. 1

SURVEY CONTROL ORDER

Horizontal
Vertical

WISCONSIN COORDINATE SYSTEM

Table with columns: Corner, Control Sta. Name, East (X), North (Y), Elevation (Z), Zone

City, Village or Town Jefferson

County of Monroe