

CERTIFICATE

CERTIFIED LAND CORNER

No. 51

21503070000

I, Gary L. Dechant, do hereby certify that on the 15th day of May 19 87, I found (evidence) (evidence) of the NW corner of Section 17, T15 N, R 3 W Fourth Principal Meridian, and I re-established said corner according to the Wisconsin Statutes as shown and described hereon.

Dated this 18th day of May 19 87.

Gary L. Dechant

Reg. Land Surveyor, S-1744

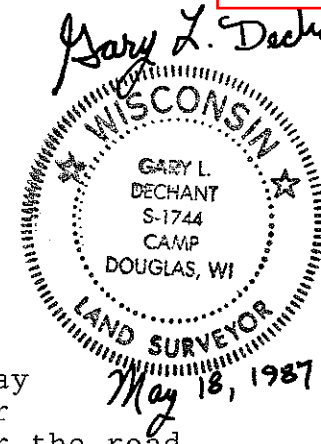
Title

History of corner establishment since Original Government Survey

Fred Holden in his survey of 1910 states in his notes that he set an iron pipe at this corner. Road records of 1881-1882 state this corner to be in the road centerline.

Description of corner evidence found:

We could not find Holden's Iron pipe. Reset corner in existing east-west fence line and on a straight line with the W 1/4 corner and SW corner of this section. There is an old road bed which comes to an end about 15 feet south of the corner. This is probably the roadway referred to in the Old Road Records of 1881-1882 and for some unknown reason decided to discontinue this route for the road and routed the road as presently travelled which is 146'+ to the west.

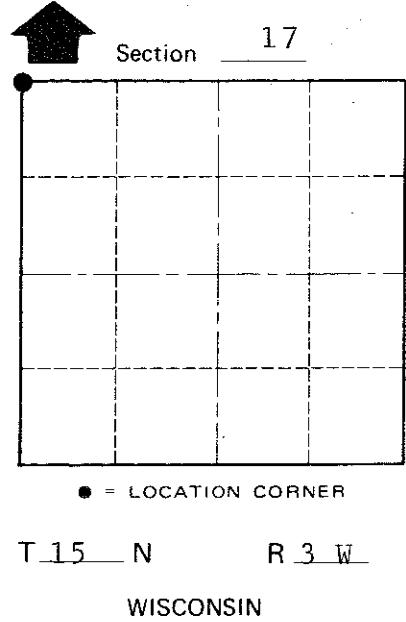
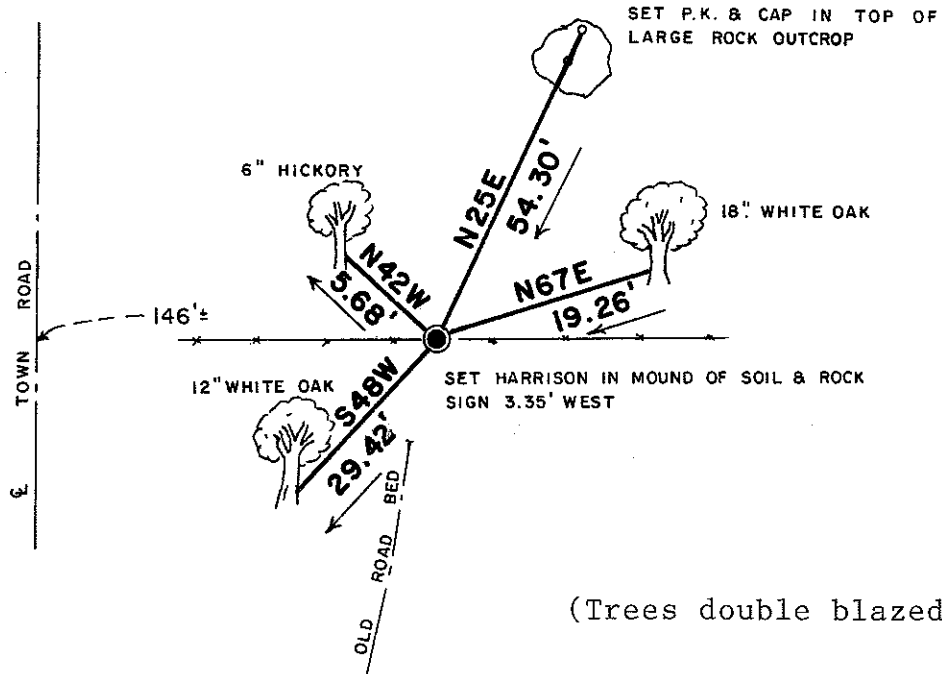


Description of corner and witness monuments, references and accessories used to perpetuate the original or re-established location of this corner:

Witnesses to corner location:

David E. Madison

Gary L. Dechant



(Trees double blazed with N&C's set)

SURVEY CONTROL ORDER

Table with 2 rows: Horizontal, Vertical.

WISCONSIN COORDINATE SYSTEM

Table with 5 columns: Corner, East (X), North (Y), Elevation (Z), Zone. Control Sta. Name row is empty.

City, Village or Town Jefferson
County of Monroe

COUNTY SURVEYOR FORM NO. 1