

# 29

**U.S. PUBLIC LAND CORNER  
MAINTENANCE**

**Corner ID : SE Sec.5, T15N-R3W**

**21503050000**

<u>DATE</u>	<u>CREW</u>	<u>MONUMENT TYPE -----</u>
June 8, 2016	Zachariah P.Dechant Gary L. Dechant	Existing Harrison intact at fence corner intersection, west side of gate. Set survey sign 1/2' south

References:

	<u>Bearing</u>	<u>Distance</u>
1) Set 3/4"x24" round iron bar, down 6", 12' SW of 36" Black Oak	N46E	30.02'
2) Set 3/4"x24" round iron bar, down 12" in field	S67E	41.99'
3) Set 3/4"x24" round iron bar, down 12" in field road	S11E	80.15'
4) Set 3/4"x24" round iron bar, down 12" in field	N24W	32.21'



I, Garold A. Sime, do hereby certify that on the 22nd day of August 19 83, I found (evidence) ~~to evidence~~ of the Southwest corner of Section 4, T 15 N, R 3 W Fourth Principal Meridian, and I re-established said corner according to the Wisconsin Statutes as shown and described hereon.

Dated this 20th day of Jan. 19 84.

Garold A. Sime  
Deputy County Surveyor  
Title

History of corner establishment since Original Government Survey

Fred A. Holden was here in April and October of 1910.

Description of corner evidence found:

Accepted 4-way fence corner as the best available evidence.

See Reverse Side For Maintenance

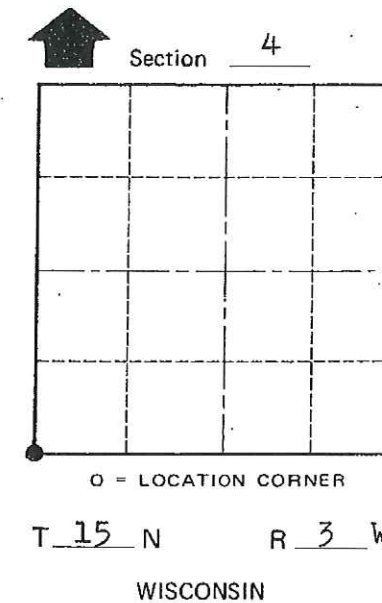
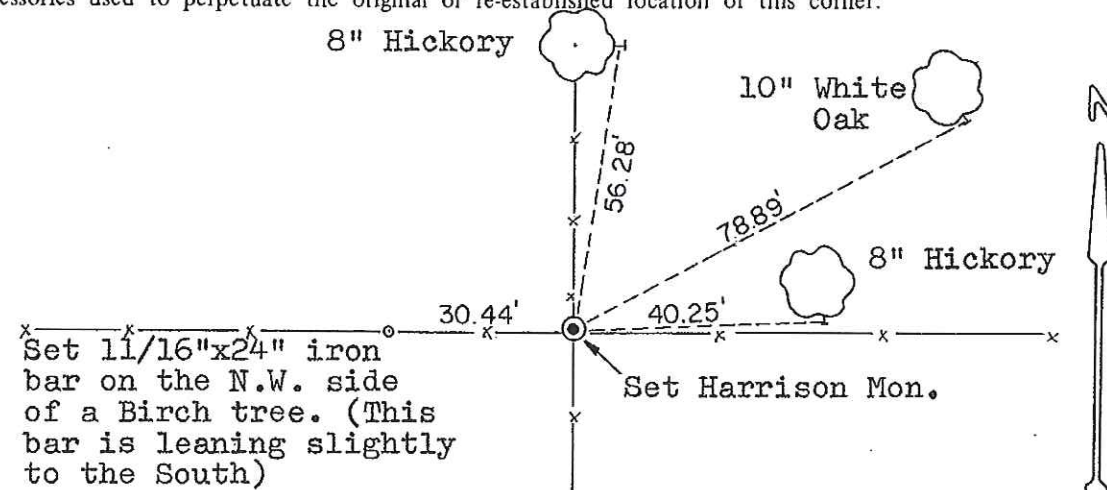
Description of corner and witness monuments, references and accessories used to perpetuate the original or re-established location of this corner:

Witnesses to corner location:

Garold A. Sime

Dallas Wilhite

COUNTY SURVEYOR FORM NO. 1



Approved: **HARLEY A. SIME**  
**MONROE CO. SURVEYOR**

The three trees shown are double blazed; the distances shown are slope distances from the Harrison to nails set in hacks in the side of the trees.

SURVEY CONTROL ORDER

Horizontal	_____
Vertical	_____

WISCONSIN COORDINATE SYSTEM

Corner	East (X)	North (Y)	Elevation (Z)	Zone
Control Sta. Name				

~~City/Village~~ Town of Jefferson

County of Monroe