

17

**U.S. PUBLIC LAND CORNER
MAINTENANCE**

Corner ID : E1/4 Sec 4, T15N-R3W

21503042000

<u>DATE</u>	<u>CREW</u>	<u>MONUMENT TYPE -----</u>
June 2, 2016	Zachariah P.Dechant Gary L. Dechant	Found Harrison top broke off on edge of field Set sign 1' west.

References:

	<u>Bearing</u>	<u>Distance</u>
1) Set 3/4"x24" round iron bar, down 12" in field	N32W	35.53'
2) Set 3/4"x24" round iron bar, down 12" in field	S80E	34.90'
3) Set 3/4"x24" round iron bar, down 6", 3' east of 4" Ash	S3W	39.23'
4)Set 3/4"x24" round iron bar, down 6", 5' NE of 18" Maple (BT)	S69W	41.98'



I, Gary L. Dechant, do hereby certify that on the 10th day of February 1993, I found ~~corner~~ (no evidence) of the E/4 corner of Section 4, T 15 N, R 3 W Fourth Principal Meridian, and I re-established said corner according to the Wisconsin Statutes as shown and described hereon.

Dated this 18th day of Feb. 1993.

Gary L. Dechant
 Registered Land Surveyor, S-1744
Title

History of corner establishment since Original Government Survey

No known history since the original government survey.

Description of corner evidence found:

Set by single proportionate measurement on line between section corners.

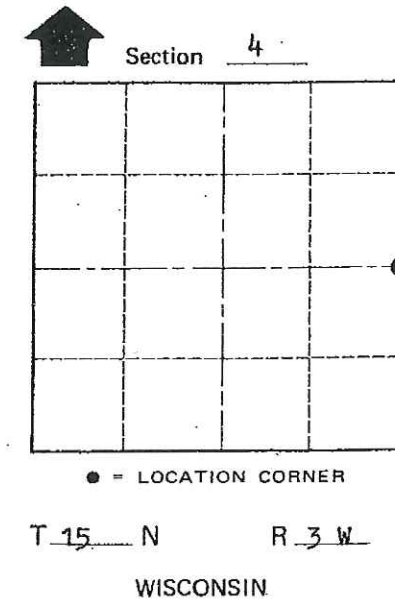
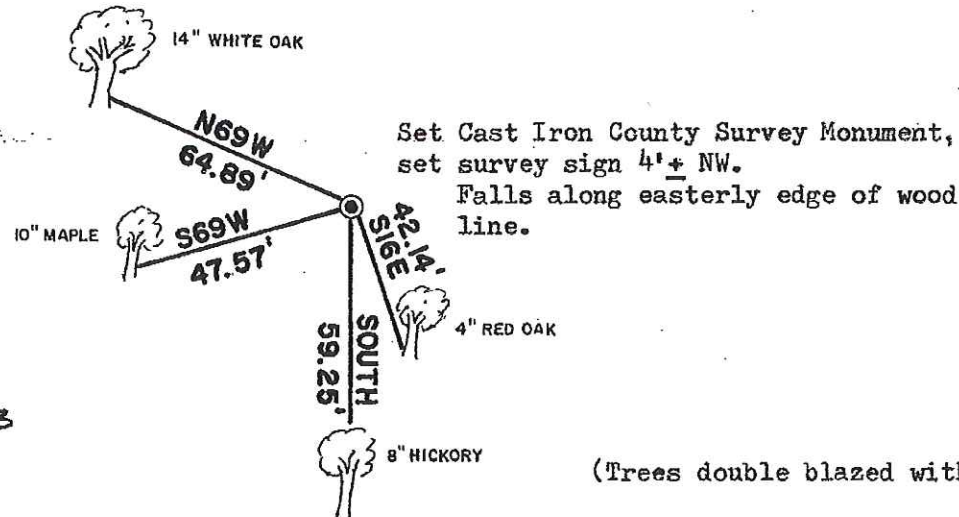
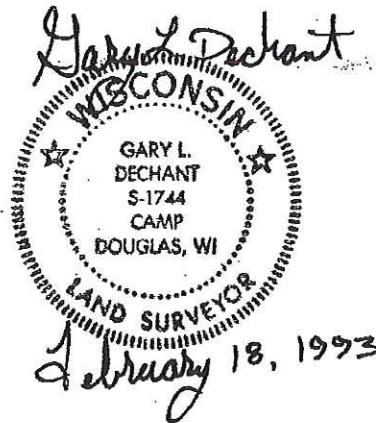
**See Reverse Side
For Maintenance**

Description of corner and witness monuments, references and accessories used to perpetuate the original or re-established location of this corner:

Witnesses to corner location:

David E. Madison

Gary L. Dechant



(Trees double blazed with nails set)

SURVEY CONTROL ORDER

Horizontal	_____
Vertical	_____

WISCONSIN COORDINATE SYSTEM

Corner	East (X)	North (Y)	Elevation (Z)	Zone
Control Sta. Name				

City, Village or Town Jefferson

County of Monroe

COUNTY SURVEYOR FORM NO. 1