

28

**U.S. PUBLIC LAND CORNER
MAINTENANCE**

**Corner ID : S1/4 Sec 4, T15N-R3W
21503040020**

<u>DATE</u>	<u>CREW</u>	<u>MONUMENT TYPE -----</u>
June 2, 2016	Zachariah P.Dechant Gary L. Dechant	Harrison intact at fence corner. Set sign 1' east Approx 35' north of massive rock

References:

	<u>Bearing</u>	<u>Distance</u>
1) Set 3/4"x24" round iron bar, down 6"	N67E	17.03'
2) Set 3/4"x24" round iron bar, down 6", 3' west of 3" Hickory	S22E	26.94'
3) Set 3/4"x24" round iron bar, down 6", south & west of two large boulders	S33W	38.71
4) Set 3/4"x24" round iron bar, down 6"	N23W	25.05'



I, Garold A. Sime, do hereby certify that on the 22nd day of August 1983, I found (evidence) ~~of~~ of the South 1/4 corner of Section 4, T 15 N, R 3 W Fourth Principal Meridian, and I re-established said corner according to the Wisconsin Statutes as shown and described hereon.

Dated this 19th day of Jan. 1984.

Garold A. Sime

Deputy County Surveyor

Title

History of corner establishment since Original Government Survey

No recorded history.

Description of corner evidence found:

Found evidence of the old fence corner and accepted it as the best available evidence.

See Reverse Side For Maintenance

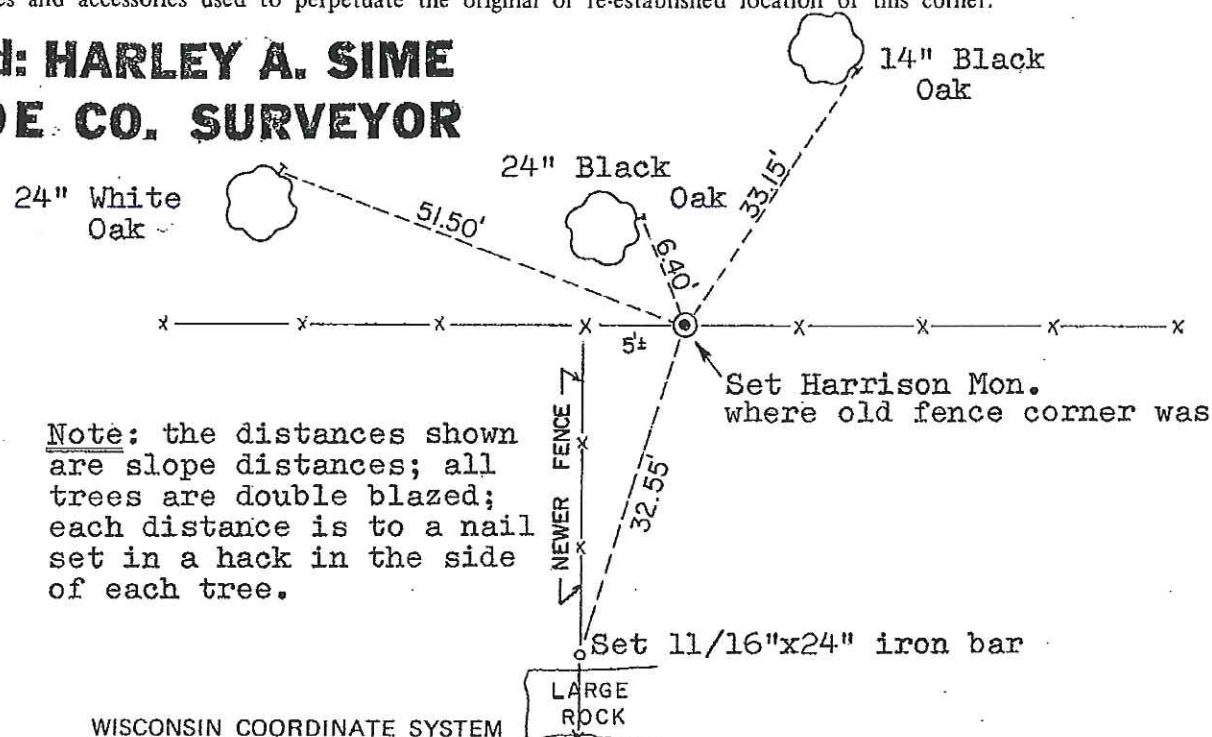
Description of corner and witness monuments, references and accessories used to perpetuate the original or re-established location of this corner:

Approved: **HARLEY A. SIME**
MONROE CO. SURVEYOR

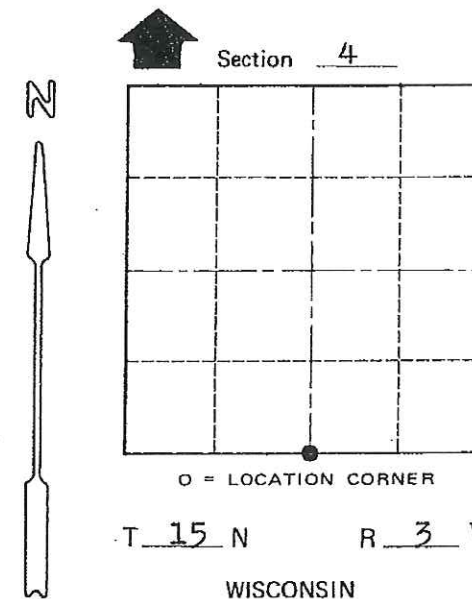
Witnesses to corner location:

Garold Sime

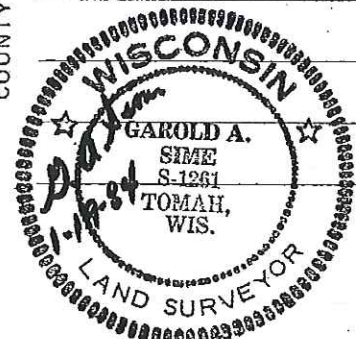
Dallas Wilhite



Note: the distances shown are slope distances; all trees are double blazed; each distance is to a nail set in a hack in the side of each tree.



COUNTY SURVEYOR FORM NO. 1



SURVEY CONTROL ORDER

Horizontal	_____
Vertical	_____

WISCONSIN COORDINATE SYSTEM				
Corner	East (X)	North (Y)	Elevation (Z)	Zone
Control Sta. Name				

~~Village of~~ Town of Jefferson
County of Monroe