

18

**U.S. PUBLIC LAND CORNER
MAINTENANCE**

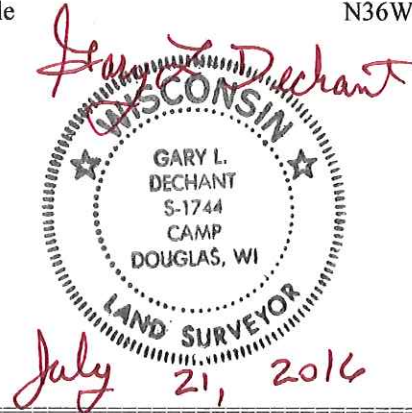
Corner ID : E1/4 Sec 3, T15N-R3W

21503032000

<u>DATE</u>	<u>CREW</u>	<u>MONUMENT TYPE -----</u>
June 16, 2016	Zachariah P.Dechant Gary L. Dechant	Found Harrison leaning very much bad. Bottom plate of Harrison missing. Reset Harrison from all four Sime's bearing trees from nails. However, G. Sime's tie sheet shows all four trees to be Hickory, but in fact all four are Maple. Set sign 1' south. Falls 2' east of north-south fence.

References:

	<u>Bearing</u>	<u>Distance</u>
1) Set 3/4"x24" round iron bar, down 6", east side 12" Maple (BT)(Hickory?)	N8E	22.44'
2) Set 3/4"x24" round iron bar, down 6", 6' east of 12" Maple	S60E	13.96'
3) Set 3/4"x24" round iron bar, down 6", 5' east 14" Maple (BT) (Hickory)	S18E	28.76
4)Set 3/4"x24" round iron bar, down 6", 6' SE of 8" Maple	N36W	23.00'



I, Garold A. Sime, do hereby certify that on the 15th day of November 1995, I found ~~XXXXXX~~ (no evidence) of the E 1/4 corner of Section 3, T 15 N, R 3 W Fourth Principal Meridian, and I re-established said corner according to the Wisconsin Statutes as shown and described hereon.

Dated this 12 day of Dec. 1995.

Garold A. Sime

Monroe County Surveyor

Title

History of corner establishment since Original Government Survey

No history of corner re-establishment since the original government survey

Description of corner evidence found:

Established this corner on the projection of the north-south fence line at the prorated distance between the Northeast and Southeast corners of Section 3.

See Reverse Side For Maintenance

COUNTY SURVEYOR FORM NO. 1

Description of corner and witness monuments, references and accessories used to perpetuate the original or re-established location of this corner:

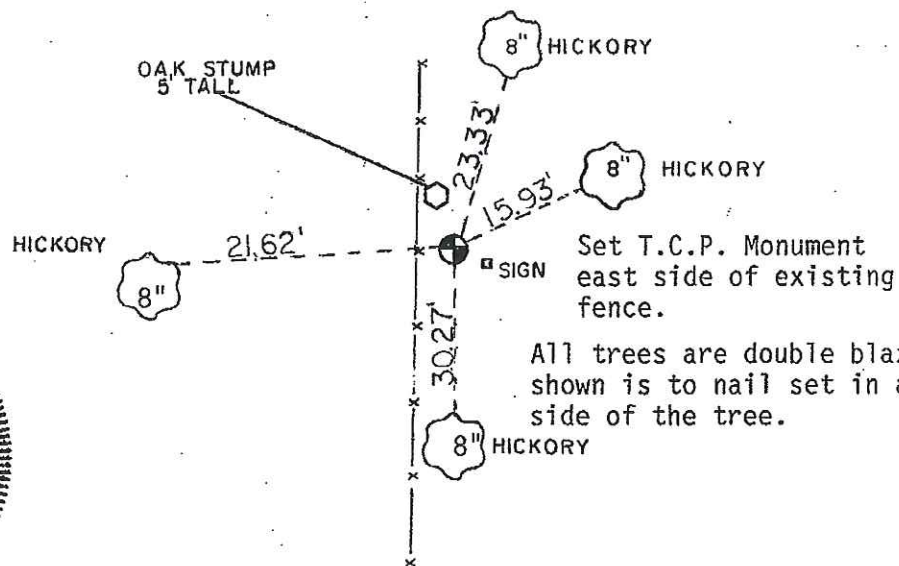
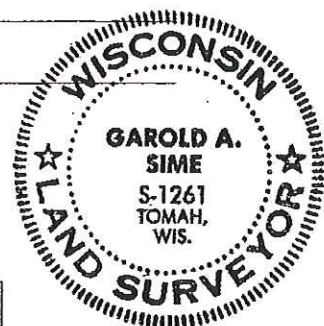
Set T.C.P. Monument at corner location.

Witnesses to corner location:

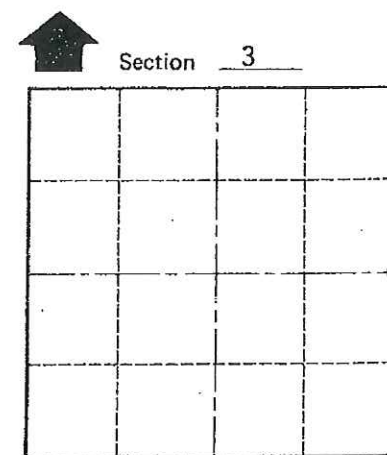
Garold A. Sime

Field crew: Harold Haberlin

Donald Cooper



All trees are double blazed & distance shown is to nail set in a hack on the side of the tree.



O = LOCATION CORNER

T 15 N R 3 W

WISCONSIN

SURVEY CONTROL ORDER

Horizontal	_____
Vertical	_____

WISCONSIN COORDINATE SYSTEM

Corner	East (X)	North (Y)	Elevation (Z)	Zone
Control Sta. Name				

City, Village or Town Jefferson

County of Monroe