

26

**U.S. PUBLIC LAND CORNER
MAINTENANCE**

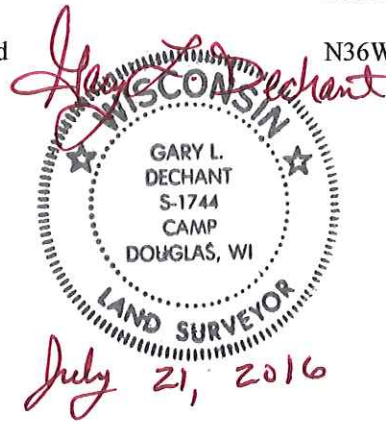
Corner ID : S1/4 Sec.3, T15N-R3W

21503030020

<u>DATE</u>	<u>CREW</u>	<u>MONUMENT TYPE -----</u>
June 9, 2016	Zachariah P.Dechant Gary L. Dechant	Existing Harrison intact at fence corner

References:

	<u>Bearing</u>	<u>Distance</u>
1) Set 3/4"x24" round iron bar, down 6", 5' SW of 6" Ash	N60E	34.16'
2) Set 3/4"x24" round iron bar, down 6", 5' east of 16" Hickory (BT)	S40E	20.40'
3) Set 3/4"x24" round iron bar, down 12" in field	S46W	22.15'
4) Set 3/4"x24" round iron bar, down 12" north edge of field	N36W	20.42'



CERTIFICATE

CERTIFIED LAND CORNER

21503030020

No. 26

I, Lawrence A. Feddersen, do hereby certify that on the 28th day of April 1978, I found (evidence) (XXXXXXXX) of the N 1/4 corner of Section 10, T 15 N, R 3 W, Fourth Principal Meridian, and I re-established said corner according to the Wisconsin Statutes as shown and described hereon.

Dated this 22 day of May 1978.

Lawrence A. Feddersen

REGISTERED LAND SURVEYOR, S-1226

History of original corner establishment:

No subsequent history of monument perpetuation since the original U.S. Government Survey.

Description of corner evidence found:

This corner was established at the intersection of two old fences North and South and a more recent fence East. The corner was set directly over an old fence post bottom found a few inches below ground and extending down below the depth we had dug to set the corner.

See Reverse Side For Maintenance

Description of corner and witness monuments, references and accessories used to perpetuate the original or re-established location of this corner:

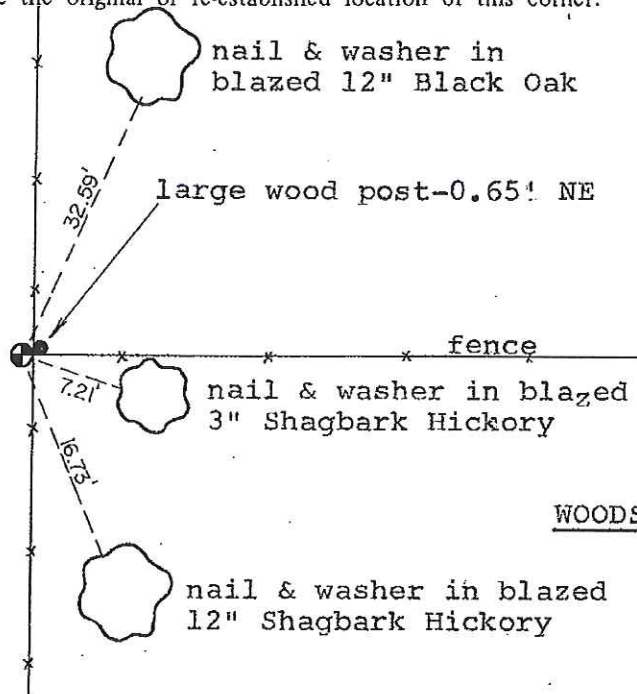
Witnesses to corner location:

Lawrence A. Feddersen

Douglas J. Malliet

PASTURE

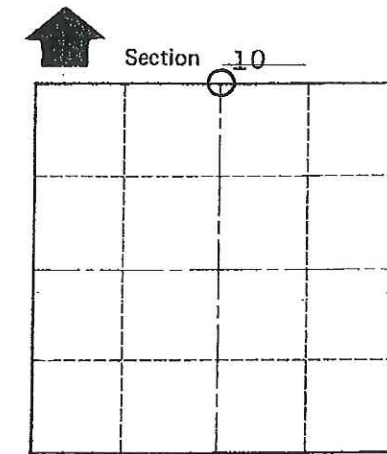
set Harrison monument-up 1" in small mound of earth



WOODS



WOODS



O = LOCATION CORNER

T 15 N R 3 W

WISCONSIN

SURVEY CONTROL ORDER

Table with 2 rows: Horizontal, Vertical

WISCONSIN COORDINATE SYSTEM

Table with 5 columns: Corner, East (X), North (Y), Elevation (Z), Zone

City, Village or Town of JEFFERSON

County of MONROE

COUNTY SURVEYOR FORM NO. 1