

21503030000

I, Lawrence A Feddersen, do hereby certify that on the 28th day of April 19 78, I found (evidence) (~~XXXXXXXX~~) of the Northeast corner of Section 10, T 15 N, R 3 W, Fourth Principal Meridian, and I re-established said corner according to the Wisconsin Statutes as shown and described hereon.

Dated this 22 day of May 19 78.
Lawrence A. Feddersen

REGISTERED LAND SURVEYOR, S-1226
Title

History of original corner establishment:

This corner was visited by Kenyon in 1891, by Schroeder some time afterwards, and by Holden in 1908.

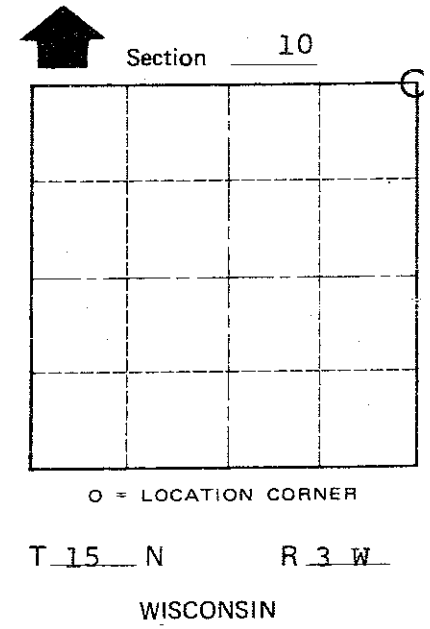
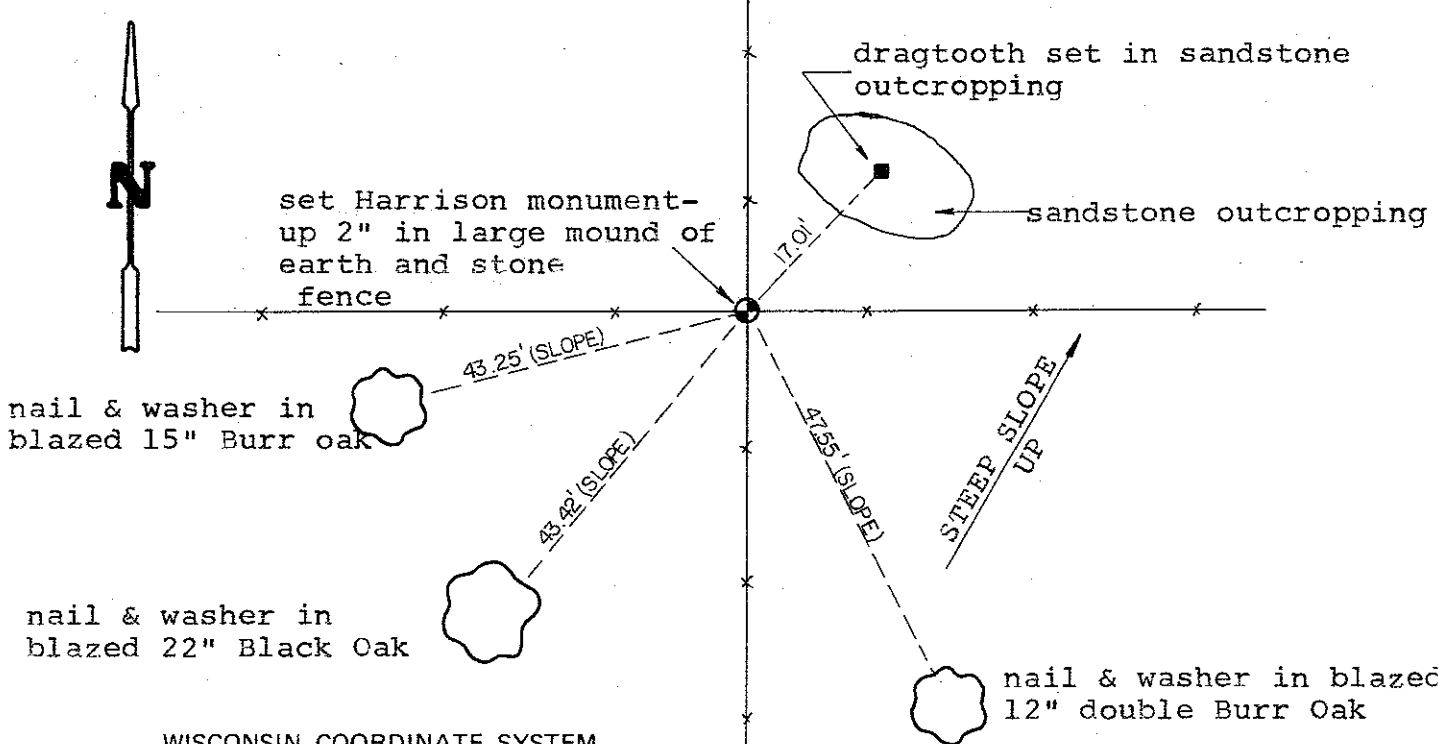
Description of corner evidence found:

This corner was established at the intersection of four old fences, as it was considered the best available evidence. Measurements 1 mile South and West agree fairly well with the Government notes.

COUNTY SURVEYOR FORM NO. 1

Description of corner and witness monuments, references and accessories used to perpetuate the original or re-established location of this corner:

Witnesses to corner location:
Lawrence A. Feddersen
Douglas J. Malliet



SURVEY CONTROL ORDER

Horizontal	_____
Vertical	_____

WISCONSIN COORDINATE SYSTEM

Corner	East (X)	North (Y)	Elevation (Z)	Zone
Control Sta. Name				

City, Village or Town of JEFFERSON
County of MONROE